



Custom Racing Suits

After verification of measurements, we guarantee the fit!

Quality...from Professionals ... for Professionals!

Vanson Leathers understands professional racers. They depend on premium quality protective garments, fast knowledgeable service and styles and graphics to showcase the racer and his or her sponsors.

Vanson Custom Suits are made from top-grain U.S. cowhide approximately 3 1/2 oz. per square foot and 1.5-1.7 mm. We are constantly developing new features and experimenting with new materials. This ensures that we can offer the best product and service to professional riders. Vanson offers a complete "menu" of options and lettering styles to choose from, allowing you to design the suit you want.

Index	Page
Mark3 Road Racing Suit Styles & Options	2 - 3
Traditional Road Race & Dirt Track Suit Styles & Options	4 - 5
Drag Racing Suit Styles & Options	6 - 7
Super Motard Suit Styles & Options	8 - 9
Draw Your Own Design	10 - 11
Design Suggestions	12
Lettering & Numbers	13
Logos & Sponsor Patch Placement	14 - 17
Measurements	18 - 21
FAQ	22
Special Notes	23
Order Form	24

How to use this form

Select the **Style** of suit based on the standard features which meet your racing needs. For each **Style**, there is a list of available **Options**. These **Options** are available at an additional cost to the base price of the suit. Select the **Style** in Section 1 and **Options** in Section 2. Next, you can **Draw Your Own Design** in Section 3 or choose from the many standard **Graphic** designs in Section 4. Color selections can be made from Vanson's wide selection of drum-dyed colors.

Sample leather color swatches are available upon request. Remember, you can change colors at any seam line for **no extra charge!** To add a personalized touch to your custom suit, **Lettering and Logos** can be added from Section 5. Note: Foils and Solar leather cost 15% more. Be sure to show the placement of any custom lettering in the spaces provided. Then, using the special **Vanson Measuring Device**, complete Section 6 to **Take Your Measurements**. Be sure to follow the directions carefully and fill out all the measurements in this section including the **Measurement Checks** to insure the accuracy of your measuring. In order to verify your measurements, it is **required** that you include your **Height, Weight, and Age**.

Finally, turn to the back page of the form and complete your order by filling out the **Shipping Information** and adding the cost from each section to determine the **Total Cost** of your suit.

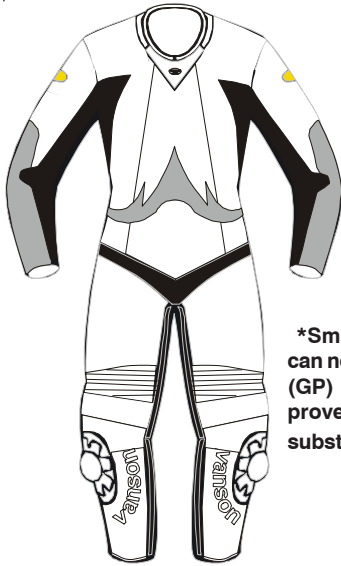




Road Racing Suits

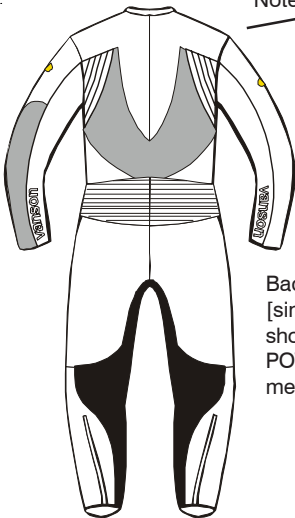
MARK3 SUITS [VO93, VE93, V932, & VL93]

1



***Smaller size suits can not accept HARD (GP) armor. CE approved armor will be substituted.**

Note: The shoulder Expanders must be all one color.



Back view of both suits [single and double zip] showing expander and POWERSTRETCH placement.

MEN'S VO93 ONE PIECE SUIT \$1,755

The VO93 featuring patented F.A.S. Armor and patented double zipper entry system has set a new benchmark for excellence in road racing suits.

Standard features include:

- Spandex beaded collar for no bulk and no restrictions
- Double-zipper front for ease of entry and smooth aerodynamic fit
- Side alignment of zippers allows for tighter tuck on bike and better overall fit
- Laminated front panel improves strength, ventilation and dramatically improves perspiration wicking (available only on double-zippered suits)
- All brass hardware
- Removable lining via small gauge nylon zippers at elbows, knees, crotch and along main body that allows for partial removal of the main body lining for washing and suit maintenance (elbow-to-wrist and knee-to-ankle lining stitched in and are non-removable)
- Seamless body-hugging Powerstretch™ from wrist to armpit includes cut-out at inner elbow for less bulk. Powerstretch™ at crotch for better comfort and reduced bulk in riding position and behind the legs follows the contour of the calf for comfort.
- Extended and rotated sleeve and ankle zippers allow for easier entry and exit
- State of the art knee design moves seams away from the knee cap (this eliminates pressure on the knee and increases your movement, comfort, control and improves armor placement for safety)
- New ergonomic knee expanders are radically shaped longer to eliminate pulling when knee is on asphalt
- Velcro® area with GP style sliders
- Raw edge finish at main zippers, wrist zippers and ankle zippers for less bulk
- Patented shoulders with forward rotated sleeves for even greater mobility and access
- New longer vented shoulder expanders for extended movement
- Articulated multi-scale spine pad and patented F.A.S. Full Floating Armor System with leather encapsulated hard plastic armor
- Properly ventilated and leather from shoulders to bottom of the knee expanders for cooling and comfort
- Properly Ventilated leather panels on the back of calf from the knee to ankle for better cooling and reduced bulk
- Proper back expander for side-to-side motion, comfort and additional ventilation
- Moisture resistant flexible hip armor

MEN'S VE93

ONE PIECE SUIT \$1,650

The VE93 suit has all the same features as the VO93 but with the traditional single front zipper.

(Laminated front panel available on on VO93)

MEN'S V932

TWO PIECE SUIT \$1,850

The VE93 two piece suit has all the same features as the VO93 but with the traditional single front zipper and a full circumference zipper at the waist.

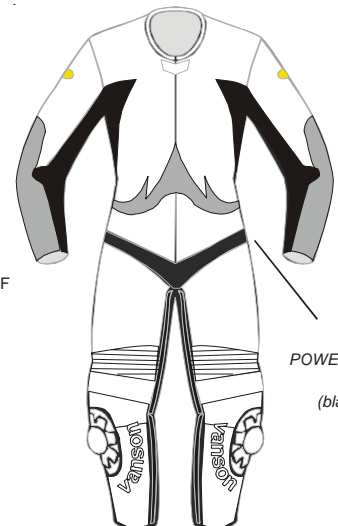
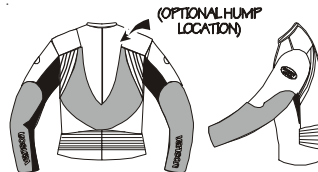
WOMEN'S VL93

ONE PIECE SUIT \$1,650

This suit is a professional one-piece suit tailored to fit a woman's shape. Available only as a single front zippered suit, the woman's MK3 suit has all the same features as the men's VE93 suit including Proper Ventilation, POWERSTRETCH Stretch panels, and *Specially sized CE approved F.A.S. Body Armor.



STANDARD GRAPHICS MAY BE DELETED IF REQUIRED BY CUSTOM GRAPHICS.



POWERSTRETCH™ Panels (black areas)

MARK3 Standard Features

PROper™ ventilation panels

The front panels of the suits are perforated for flow through ventilation. This feature combined with a perspiration wicking mesh lining [VO93 only] will help to keep you comfortable even on the hottest day.

POWERSTRETCH™ Stretch Panels - is a VANSON™

Powerstretch™ panels allow a snug fit with excellent ease of movement. Powerstretch™ has an extremely high tensile strength. This combined with a stretch material results in comfort and strength where you need it most.

F.A.S.™ Body Armor (Patented)

Body Armor is an essential part of a modern racing suit. We at Vanson have developed the Floating Armor System (F.A.S.). This system features a moveable sandwich of materials to dissipate and absorb impact energy while allowing a greater range of movement and comfort. All the armor pieces are attached with Velcro® to the outer shell from within utilizing an elastic suspension and are adjustable for maximum comfort and protection yet removable for repairs. The energy absorbing sandwich has outer and inner

components. The outer component is the leather outer shell, a layer of closed cell foam, and an inside leather patch.

The inner component is another sandwich of hard armor and soft foam attached with Velcro® and/or elastic to the outer component. This is designed to "float" between your body and the outer leather shell. This system allows the outer shell of the suit and your body to move independently of one another - without losing the protection of the armor.

F.A.S. protected areas are: shoulder, elbow/forearm, knees and an articulated back pad. ***Smaller size suits can not accept HARD (GP) armor.**

CE approved armor will be substituted.

Double-Zipper Front (Patented VO93 only) for ease of entry and a smooth aerodynamic fit. Side alignment of zippers allows for tighter tuck on bike, and eliminates "bunching" for a better fit.

Zip-Free Washable Lining

No more stinky leathers! Now you can unzip the mesh lining at the arms, legs and along the torso for partial removal to wash and dry (lining remains attached at ankle and cuffs).

2 Select Options MARK3 Road Racing Suit

Select the options to be added to the basic suit as needed from those listed. Lettering and custom graphics will be specified in later pages.

#	Description of option	Price \$
	<i>GP HARD ARMOR COMES STANDARD WITH ALL ROADRACE SUITS.</i>	
	*F.A.S. ARMOR™ Patented	STD
41E	Back pad with strap, in lieu of Pro4	20.00 extra
VA1V	VANTEC armor - shoulders	30.00
VA2V	VANTEC armor - elbows	30.00
VA3V	VANTEC armor - knees	30.00
KNEE DETAILS & SLIDERS		
21	Leather patch to cover Velcro® for street use (matches suit graphics, includes Velcro®)	40.00 pr
21C	Replacement Pucks Only	40.00 pr
21D	Sidecar passenger seat or shoulder Velcro® patch with slider pucks (show placement on diagram in sec. 4)	75.00
WRIST DETAILS		
11	Velcro® closure tabs at end of zipper	15.00 pr
40L	"D" Ring, left wrist for kill switch cord	10.00 ea
40R	"D" Ring, right wrist for kill switch cord	10.00 ea
PERFORATIONS (for ventilation)		
20F	Back on body under arms	20.00 pr
46D	Rear, at side seams, shoulder to waist	35.00 pr
PROper™ LEATHER PANELS (more holes per inch than standard perfs)		
20X	Perforated knee to ankle in the front	20.00 pr
46E	Perforated under sleeve (3rd) panel	35.00 pr
PATCHES		
23	Velcro® sewn in square on back for #24. Size - approx. 12" wide X 12" high	20.00
24	Square of leather with strips of velcro to mate up with option #23. Size approx. 12" wide X 12" high. Specify color. Price does not include letters/numbers.	25.00
26	Sewing on sponsor patches (provided by customer) covered in clear plastic	8.00 ea
Total cost of patches @ \$8.00 ea.		
26A	Additional Vanson competition ovals, specify location and number in section 4	N/C
DVO	Delete Vanson Ovals	100.00
26T	Reflective Ovals	N/C
EMBO	Leather Embroidered Patches	20.00

#	Description of option	Price \$
	Hump Vanson's Slipstream Pad in contoured closed cell foam. Order this high-tech styled feature as an option on both one and two piece racing suits. Slipstream pad may limit graphic sizing and availability on some suits.	190.00

SPECIAL OPTIONS* not listed to the left.

Total Options \$

* If you want an option that is not shown, sketch and describe in detail your requirements. We will advise you of cost and practicality.



Road Race and Dirt Track Suits

After verification of measurements, we guarantee the fit!

1 These are true race suits designed to fit when in the tuck or racing position. They may not give a comfortable fit if used for other applications. The construction is functional and may appear unfinished to those not familiar with race suits. These are "full-on" race suits.

Traditional One Piece RR-1 \$1,150

Beaded collar.

Velcro® tab across top of front zipper.

Extra leather sewn inside at the shoulder/collarbone.

Extra leather sewn inside at elbow/forearm

Leather expansion section at back for comfort and freedom of movement

Wrists and ankles have "raw edge" finish for comfort with less bulk

This classic suit has been developed over the years, made from top-grain, 3 to 3 1/2 oz. (1.5 to 1.7 mm) U.S. leather. Made from first class materials, the Traditional is an excellent basic suit.

Nylon mesh lining for comfort and ventilation.

Heavy duty front zipper with windflap and license pocket.

Zipper on inseam of sleeves.

Extra leather sewn inside at the knees.

Leg zippers at rear of calf

Mark 2 One Piece RR-12 \$1,295

POWERSTRETCH™ keyhole shaped sections at elbow/forearm for ventilation and comfort in the racing position.

Velcro® area for the fitting of knee sliders (pucks are not standard).

F.A.S. Armor™ (see page 3)
Includes:
Elbow/Forearm
Shoulder
Knees
Backpad
Closed cell foam hip pads
*Smaller size suits can not accept HARD (GP) armor. CE approved armor will be substituted.

The MK 2 is made from the same top quality materials as the Traditional and includes most popular options.

POWERSTRETCH™ keyhole shaped sections from back of knee to ankle for comfort in the tuck position.

Traditional Two Piece RR-2 \$1,185

Snap collar with fold-back snap tab.

Extra leather sewn inside at elbow/forearm

Back of jacket cut low to help keep the wind out.

The two piece version of the high quality Traditional suit gives great versatility.

Extra leather sewn inside at the shoulder/ collarbone.

Waistband with Velcro® fastening at front conceals waist zipper.

Elastic around top of pants and snaps at front for fit.

Extra leather sewn inside at the knees.

Leg zippers at rear of calf. Raw edge finish at ankles for less bulk

Mark 2 Two Piece RR-22 \$1,350

Same standard features as Traditional 2 piece suit plus the listed additional features.

POWERSTRETCH™ keyhole shaped sections from back of knee to ankle for comfort in the tuck position.

F.A.S. Armor™ (see page 3)
Includes:
Elbow/Forearm
Shoulder
Knees
Backpad
Closed cell foam hip pads
*Smaller size suits can not accept HARD (GP) armor. CE approved armor will be substituted.

Leg zippers at rear of calf. Raw edge finish at ankles for less bulk

* **Women's Mark2 Two Piece Suit** - Women's version of two-piece custom racing suit will utilize special tailoring to fit a woman's shape and CE approved armor. \$1,350

2 Select Options Road Race & Dirt Track

Select the options to be added to the basic suit as needed from those listed. Lettering and custom graphics will be specified in later pages.

* If you want an option that is not shown, sketch and describe in detail your requirements. We will advise you of cost and practicality.

#	Description of option	Price
	F.A.S. ARMOR™ Patented Standard in RR12 and RR22. Includes GP Hard armor and Spine pad (Velcro® in or strap on).	
41E	Back pad with strap	20.00 ^{extra}
VA1V	VANTEC armor - shoulders	30.00
VA2V	VANTEC armor - elbows	30.00
VA3V	VANTEC armor - knees	30.00
	SOFT ARMOR	
SA1	Street Armor - shoulder	30.00 pr
SA2	Street Armor - elbow/forearm	30.00 pr
SA3	Street Armor - knee/shin	30.00 pr
	CLOSED CELL PADDING (sewn inside backed with leather or mesh)	
1A	Elbows, oval shape	20.00 pr
1B	Knees, oval shape	20.00 pr
1C	Spine	35.00
1F	Elbow/forearm	20.00 pr
3	Hips	35.00 pr
1H	Chest	50.00
1I	Bicep	25.00 pr
1J	Shins	25.00 pr
1S	Shoulders	20.00
	POWERSTRECH™ STRETCH PANELS reduces bulk in same manner as spandex, but offers additional abrasion resistance. (Select blue, red or black.)	
39VK	Velocity option (1 piece only) arm, leg, crotch & thigh	115.00
40VK	Velocity option (2 piece only) arm, leg & crotch	105.00
39AK	Elbows, oval shape	35.00 pr
39BK	Knees, oval shape	35.00 pr
39DK	Knees, keyhole shape going to ankle	45.00 pr
39FK	Elbow/forearm, keyhole shape	45.00 pr
39HK	1" strip from wrist to armhole	45.00 pr
39IK	1" strip on inseam, crotch to mid-thigh	55.00 pr
	EXTRA LEATHER (sewn inside suit)	
4	Seat	30.00
2	Hips	25.00 pr
	KNEE DETAILS & SLIDERS	
44	Leather expansion sections above knees for ease of movement	40.00 pr
21	Leather patch over Velcro® for street use (matches suit graphics, includes Velcro®)	40.00
21A	Knee pucks including Velcro® on suit	80.00 pr
21B	Velcro® patches only sewn to suit	40.00
21C	Replacement Pucks Only	40.00 pr
21D	Sidocar passenger seat or shoulder Velcro® patch with slider pucks (show placement on diagram in sec. 4)	75.00
	VENTS (street use only)	
19	Rear, at sides under arms, as exits	25.00 pr
19A	Zip front, show location on suit diagram	40.00 pr
19B	Cobra Style (U.S. Patent # 5.507.042) adjustable vent under perforated leather. NOTE: Cannot be used with zip out mesh liner (2 piece only).	230.00 pr
	FIT OPTIONS	
FIT1	More radical cut for tight tuck position	60.00
	WAIST DETAILS (RR2, RR22)	
40A	Suspender buttons, 4 sets of 2 sewn to suit pants waistband	15.00
40S	Suspenders	35.00
40B	Delete jacket waistband (2 piece only)	N/C
	WRIST DETAILS (DIRT TRACK)	
14G	Knit Cuff	15.00 pr

If you need to specify the location of an option (pockets for example) draw the location on the suit diagrams in section 3. This and section 5 is where you can sketch and specify the location of letters and numbers as your graphic design (stripes, etc.) for your suit.

#	Description of option	Price
	COLLARS	
15A	Mandarin style with snap-back tab	20.00
22	Beaded or bound style (with tab)	20.00
22A	Velcro® tab across top of front zipper	20.00
33	Mandarin with Velcro® closure	20.00
22B	Nehru open neck	20.00
	POCKETS (sketch location in section 4)	
6A	Inside lining open, right chest	20.00 ea
6B	Inside lining open, left chest	20.00 ea
6D	Inside (applied patch)	25.00 ea
7	Outside pocket, zipper	20.00 ea
7A	Outside pocket, snap	20.00 ea
7C	Outside pocket, open	20.00 ea
	WRIST DETAILS	
11	Velcro® closure tabs at end of zipper	15.00 pr
14C	Zipper at outseam (under the sleeve)	18.00 pr
40L	"D" Ring, Left wrist (for kill switch cord)	10.00 ea
40R	"D" Ring, Right wrist (for kill switch cord)	10.00 ea
	PERFORATIONS (for ventilation)	
20A	Front on body under arms	20.00 pr
20F	Back on body under arms	20.00 pr
20D	Entire upper chest to waist	60.00
20E	Waist to crotch	35.00
46	Band across upper chest	35.00
46A	Biceps at front sleeve	20.00 pr
46B	Thighs, inseam between crotch & knee	20.00 pr
46C	Rear, at sides under arms, as exits	20.00 pr
46D	Rear, at side seams, shoulder to waist	35.00 pr
	PROperf™ LEATHER PANELS (more holes per inch than standard perfs)	
46PJ	Shoulder to waist band (2 piece only)	25.00
46PP	Waist to thigh seam (2 piece only)	20.00
46P	Shoulder seam to thigh seam (1 piece only)	35.00
20Q	Thigh seam to above knee expander	35.00
20R	Thigh seam to end of knee expander	35.00
46E	Perforated under sleeve (3rd) panel	35.00 pr
20T	Back of calf, knee to ankle	15.00 pr
20X	Properf Knee/Ankle front	20.00
20Z	Back expander	20.00
	LINING	
17C	Partial Zip out mesh lining attached at wrist and ankles for washing (1 piece only).	60.00
	ANKLE DETAILS	
13A	10" zipper (placed to fit)	20.00 pr
	PATCHES	
26T	Reflective Vanson Ovals	N/C
23	Velcro® sewn in square on back for #24. Size - approx. 12" wide X 12" high	20.00
24	Square of leather with strips of Velcro® to mate up with option #23. Size approx. 12" wide X 12" high. Specify color. Price does not include letters/numbers.	25.00
26	Sewing on sponsor patches (provided by customer) covered in clear plastic	8.00 ea
	Total cost of patches @ \$8.00 ea.	
26A	Additional Vanson competition ovals, specify location and number in section 4	N/C
26B	Sewing on patches w/out plastic covers	8.00 ea
DVO	Delete Vanson Ovals	100.00
EMBO	Leather Embroidered Ovals	20.00
	MISC. OPTIONS	
	Hump (see page three)	190.00
OPTION TOTAL \$		



Drag Race Suits

After verification of measurements, we guarantee the fit!

1

DR-2 Two Piece **\$1,095.00**

DR-1 One Piece **\$1,075.00**

DRL2 Women's Drag Suit **\$1,095.00**

Princess Cut on torso to match women's contours
Identical safety features to men's DR2

*Mandarin collar,
Velcro® closure with
Vanson logo embroidery.*

License pocket.

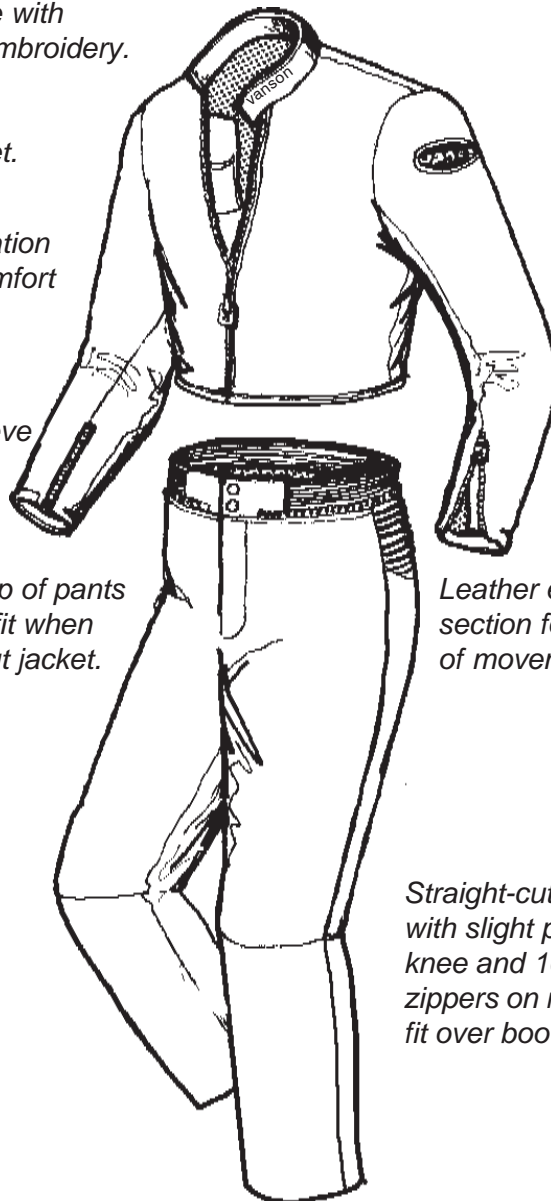
*Nylon Mesh perspiration
wicking lining for comfort
and ventilation.*

D-ring on right sleeve

*Elastic at top of pants
for secure fit when
worn without jacket.*

*Leather expansion
section for freedom
of movement.*

*Straight-cut pant legs
with slight pre-curved
knee and 10" ankle
zippers on rear. Sized to
fit over boots.*



Standard Features

- *Two piece suit of single thickness leather. (no inside patches)*
- *Adjustable mandarin collar w/Velcro®.*
- *No waistband on jacket.*
- *Wind flap with license pocket Velcro® closure on collar.*
- *Low bulk raw edge sleeves and ankles.*
- *Straight cut pants - over boots. (slightly pre-curved knee)*
- *Ankle zippers on rear.*
- *D-ring on right sleeve.*
- *Perspiration wicking lining.*
- *Vanson logo embroidered on collar.*
- *Velcro tab across ankle zipper.*

2

Select Options Drag Race Suit

This section is to select available options to be added to the basic drag race suit as needed.

Select the options you require from those listed. If you need to specify the location of an option, draw the location on the suit diagrams in section 3. This and section 5 are where you can sketch and specify letters, numbers and your graphic design (stripes etc.) for your suit.

#	Description of option	Price \$
ARMOR		
PROT	Back pad with strap	109.00 ea
PRO4	Articulated Back pad	89.00 ea
CLOSED CELL PADDING (sewn inside backed with leather or mesh)		
1A	Elbows, oval shape	20.00 pr
1B	Knees, oval shape	20.00 pr
1C	Spine	35.00
1F	Elbow/forearm	20.00 pr
3	Hips	35.00 pr
1H	Chest	50.00
1I	Bicep	25.00 pr
1J	Shins	25.00 pr
1S	Shoulders	20.00 pr
POWERSTRECH™ PANELS reduces bulk in same manner as spandex, but offers additional abrasion resistance. (Select red, blue, or black)		
39VK	Velocity option one piece only (arm, leg, crotch & thigh)	115.00
40VK	Velocity option for two piece suit (arm, leg & crotch - a strip of POWERSTRECH™ along the inseam of leg from ankle to ankle).	105.00
39AK	Elbows, oval shape	35.00 pr
39BK	Knees, oval shape	35.00 pr
39DK	Knees, keyhole shape going to ankle	45.00 pr
39FK	Elbow/forearm, keyhole shape	45.00 pr
39HK	POWERSTRECH™ strip from wrist to armhole (uses a three piece sleeve)	45.00 pr
39IK	POWERSTRECH™ strip / inseam, crotch- mid-thigh	55.00 pr
KS	POWERSTRECH™ stirrup added to pants bottom	30.00 pr
PERFORATIONS (for ventilation)		
20A	Front on body under arms	20.00 pr
20F	Back on body under arms	20.00 pr
20D	Entire upper chest to waist	60.00
20E	Waist to crotch	35.00
46	Band across upper chest	35.00
46A	Biceps at front sleeve	20.00 pr
46B	Thighs, inseam between crotch & knee	20.00 pr
46C	Rear, at sides under arms, as exits	20.00 pr
46D	Rear, at side seams, shoulder to waist	35.00 pr
PROperf™ LEATHER PANELS (more holes per inch than standard perfs)		
46P	Shoulder seam to thigh seam (1 peice suit only)	35.00
46PP	Waist to knee seam	20.00
20Q	Waist seam to mid thigh	35.00
20R	Thigh to knee expander	35.00
46E	Perforated under sleeve (3rd) panel	35.00 pr
20T	Back of calf, knee to ankle	15.00 pr
20X	Properfed knee to ankle front	20.00
20Z	Back expander	20.00
46PJ	Shoulder to waist (2 piece only)	25.00

#	Description of option	Price \$
EXTRA LEATHER (sewn inside suit)		
4	Seat	30.00
2	Hips	25.00 pr
4A	Elbows	25.00 pr
4B	Knees	25.00 pr
4D	Elbow/Forearm	30.00 pr
4E	Shoulders	25.00 pr
GRND	Leather/ POWERSTRECH™ at all crash areas	150.00
KNEE DETAILS		
44B	Leather expansion sections above knees for ease of movement (3 Ribs) - for Supersport	40.00 pr
FIT3	Straight leg (no knee seam)	60.00
14A	Ankle Zippers 8" Inseam	20.00 pr
POCKETS (sketch location, section 4)		
6A	Inside lining open, right chest	20.00 ea
6D	Inside (applied patch)	25.00 ea
6B	Inside lining open, left shest	20.00 ea
COLLARS		
15A	Mandarin collar with snap	20.00
22	Beaded or bound style (with tab)	20.00
22A	Velcro tab across top of front zipper	20.00
WAIST DETAILS (Standard none)		
42	Waist band	40.00
40A	Suspender buttons, 4 sets of two sewn to suit pants waistband	15.00 set
40S	Suspenders	35.00
WRIST DETAILS		
11	Velcro® closure tabs at end of zipper	15.00 pr
14C	Zipper on outseam (under the sleeve)	18.00 pr
14G	Knit Cuffs (Dirt Track)	15.00 pr
40L	"D" Ring, on left wrist for kill switch cord	10.00
40R	"D" Ring, on right wrist for kill switch cord	10.00
PATCHES		
26T	Reflective Vanson Ovals	N/C
23	Velcro® sewn in square on back for #24. Size - approx. 12" wide X 12" high	20.00
24	Square of leather with strips of Velcro® to mate up with option #23. Specify color. Size approx. 12" wide X 12" high. Price does not include letters/numbers.	25.00
26	Sewing on sponsor patches (provided by customer) No plastic unless requested	8.00 ea
Total cost of patches @ \$8.00 ea.		
26A	Additional Vanson competition ovals, specify location and no. in section 4	N/C
26B	Sewing on patches without plastic covers	8.00 ea
DVO	Delete Vanson Ovals	100.00
EMBO	Leather Embroidered Patches	20.00
TOP FUEL OPTIONS		
PSHS	POWERSHIELD™ heat shield right leg panel YELLOW ONLY	145.00
HBV	Hangers for Ballistic Vest	32.00
PSHD	POWERSHIELD™ heat shield right leg panel and right knee (Destroyer) YELLOW ONLY	175.00

SPECIAL OPTIONS* not listed above.

OPTIONS TOTAL \$

*If you want an option that is not shown, sketch and describe in detail your requirements. We will advise you of cost and practicality.



Super Moto Suits

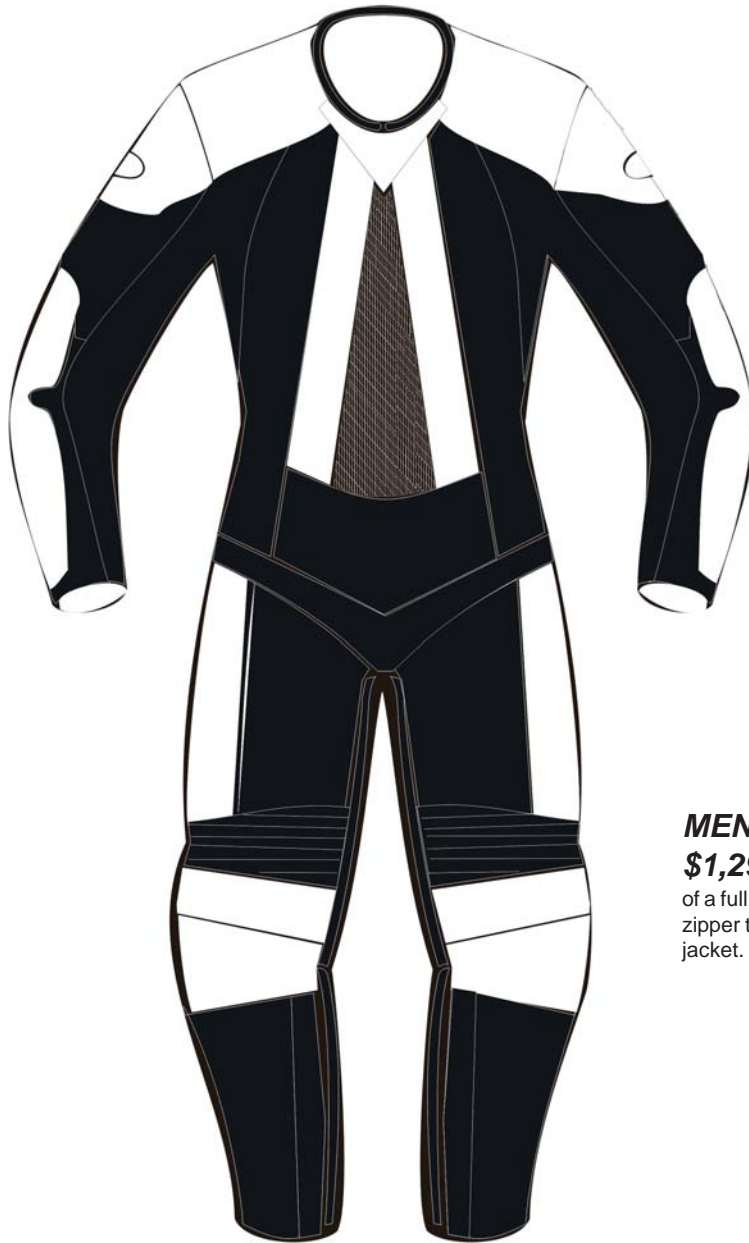
[SMO2]

After verification of measurements, we guarantee the fit!

1

MEN'S SMO2 ONE PIECE Moto SUIT \$1,195

The new SMO2 featuring CE approved armor and a double zipper entry system has set a new benchmark for excellence in super moto racing suits. Standard features include POWERSTRECH - a VANSON TM.



- Spandex beaded collar for no bulk and no restrictions.
- Double-zipper fronts for ease of entry and smooth aerodynamic fit.
- POWERSTRECH™ material in shoulders, arms, legs and crotch to facilitate extreme ease of movement required for motard racing.
- Combination of leather and textiles for increased safety while providing a lightweight fatigue reducing motard garment.
- New CE approved armor with high flex to allow a greater range of motion while retaining a high level of safety.
- Pro Perf™ leather panels to increase cooling, flexibility and comfort.
- Extra Large Stretch panels in shoulders, back, and knees for maximum range of motion.
- Removable perspiration wicking lining. Only available on 1 piece suit.

MEN'S SM22 TWO PIECE SUPER MOTO SUIT

\$1,295 - Same as the one piece Super Moto suit but with the convenience of a full circumference zipper to lock to the convenience of a full circumference zipper to lock the jacket to the pants. Only available as a single front zippered jacket.

SMO2 Standard Features

PROperf™ Ventilation Panels

The front panels of the suits are perforated for flow through ventilation. This feature combined with a perspiration wicking mesh lining will help to keep you comfortable even on the hottest day.

Powerstretch™ Panels-POWERSTRECH is a VANSON TM.

Powerstretch™ panels allow a snug fit with excellent ease of movement. Powerstretch™ has an extremely high tensile strength. This combined with a stretch material results in comfort and strength where you need it most.

Double-Zipper Front (Patented) for ease of entry and a smooth aerodynamic fit. Side alignment of zippers allows for tighter tuck on bike, and eliminates "bunching" for a better fit.

Zip-Free Washable Lining

No more stinky leathers! Now you can unzip the mesh lining at the arms, legs and along the torso for partial removal to wash and dry (lining remains attached at ankle and cuffs).

CE Approved Vantech armor-shoulders, elbow/forearms, knee, hips and backpad.

2

Select Options **SMO2** Super Moto Suit

Select the options to be added to the basic suit as needed from those listed. Lettering and custom graphics will be specified in later pages.

#	Description of option	Price \$	#	Description of option	Price \$
ARMOR					
PR1	Hard Shoulder	55.00			
PR2	Hard Elbow/ Forearm	59.00			
PR3	Hard Knee/Shin	55.00			
PRO4	Scaled Back Pad	89.00			
PRO5	Hip	30.00			
41E	Back pad with strap, in lieu of Pro4	20.00 extra			
KNEE DETAILS & SLIDERS					
21	Leather patch to cover Velcro® for street use (matches suit graphics, includes Velcro®)	40.00 pr			
21A	Velcro® patches for knee sliders AND sliders	80.00 pr			
21B	Velcro® patches for knee sliders [only]	40.00 pr			
21C	Replacement Pucks Only	40.00 pr			
WRIST DETAILS					
11	Velcro® closure tabs at end of zipper	5.00 pr			
40L	"D" Ring, left wrist for kill switch cord	10.00 ea			
40R	"D" Ring, right wrist for kill switch cord	10.00 ea			
PATCHES					
23	Velcro® sewn in square on back for #24. Size - approx. 12" wide X 12" high	20.00			
24	Square of leather with strips of velcro to mate up with option #23. Size approx. 12" wide X 12" high. Specify color. Price does not include letters/numbers.	25.00			
26	Sewing on sponsor patches (provided by customer) covered in clear plastic	8.00 ea			
Total cost of patches @ \$3.00 ea.					
26A	Vanson competition ovals, specify location and number in section 4	N/C			
26T	Vanson Reflective Ovals	N/C			
EMBO	Leather Embroidered Vanson Patches	40.00			
DVO	Delete Vanson Ovals	100.00			
Peez	Fly zipper on 1 piece Double zipper suits	30.00			
				Hump	
				Vanson's Slipstream Pad in contoured closed cell foam. Order this high- tech styled feature as an option on both one and two piece racing suits. Slipstream pad may limit graphic sizing and availability on some suits.	190.00
				SPECIAL OPTIONS* not listed to the left.	

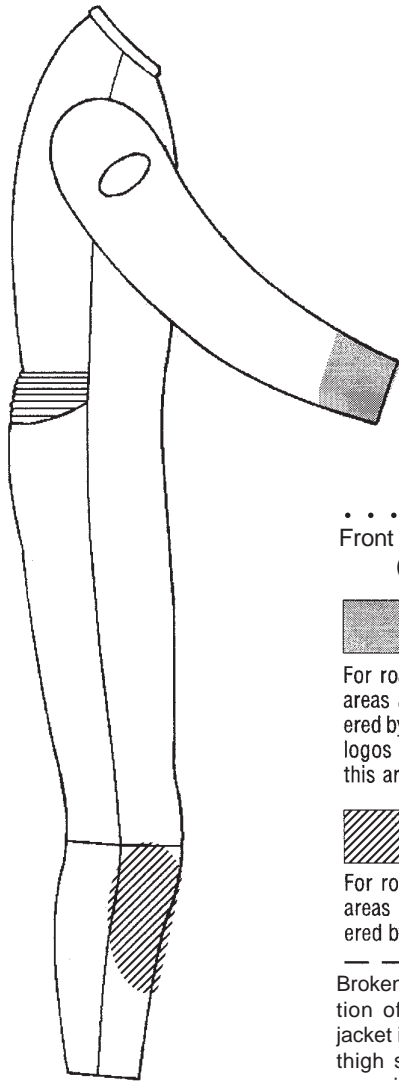
Total Options \$

** If you want an option that is not shown, sketch and describe in detail your requirements. We will advise you of cost and practicality.*

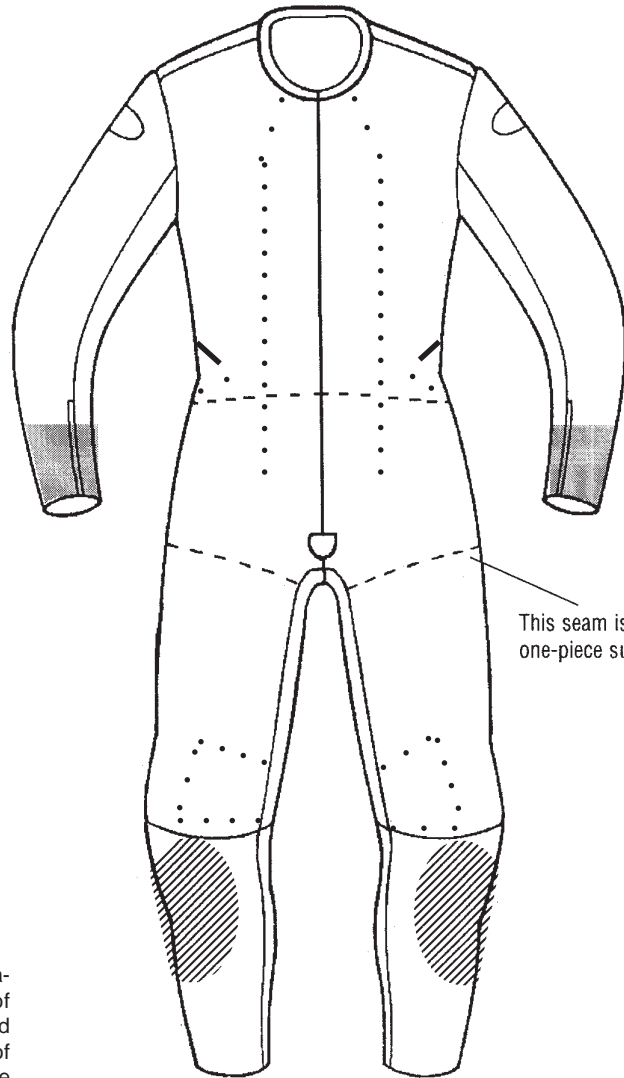
3 Draw Your Own Design

Sketch suit design and show where any letters or numbers go. Show location of selected options such as sponsor patches and pockets. In addition to this section, fill out section 5 if letters and numbers are part of your design. (For design ideas, see section 4.) After reviewing design, we will advise you of the cost.

RIGHT



FRONT



.....
 Front Double Zipper
 (Volante)



For roadrace use, these areas are normally covered by gloves. Keep any logos and letters out of this area.



For roadrace use, these areas are normally covered by the knee sliders.

Broken lines show location of bottom edge of jacket in 2-piece suit and thigh seams at front of one-piece suit. Volante excluded.

This seam is on one-piece suits only.

DESIGN AND STRIPE NOTES: Use these lines for any notes that may help our design department interpret your design. You will be advised of cost after we have reviewed it.

INLAYS & INLAY DESIGNS

Inlays are stripes over 3 inches in width.

Inlay Designs are those color separations that require seam lines in addition to the basic seams (shown on the diagram).

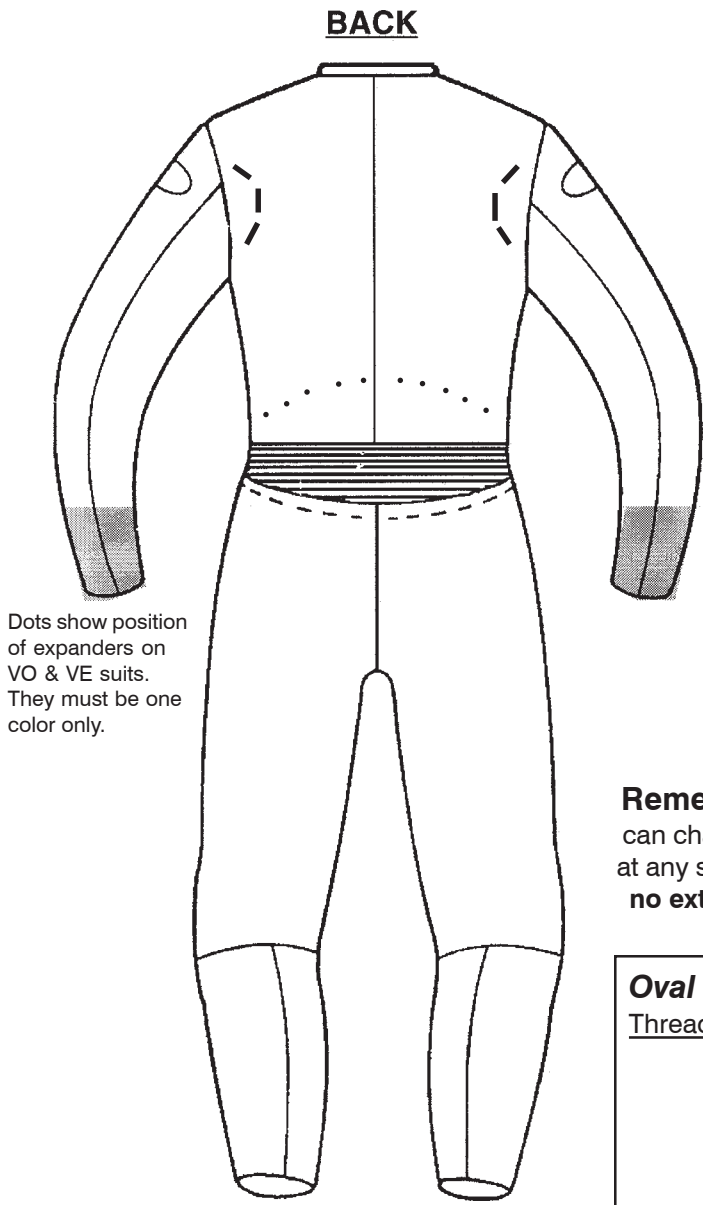
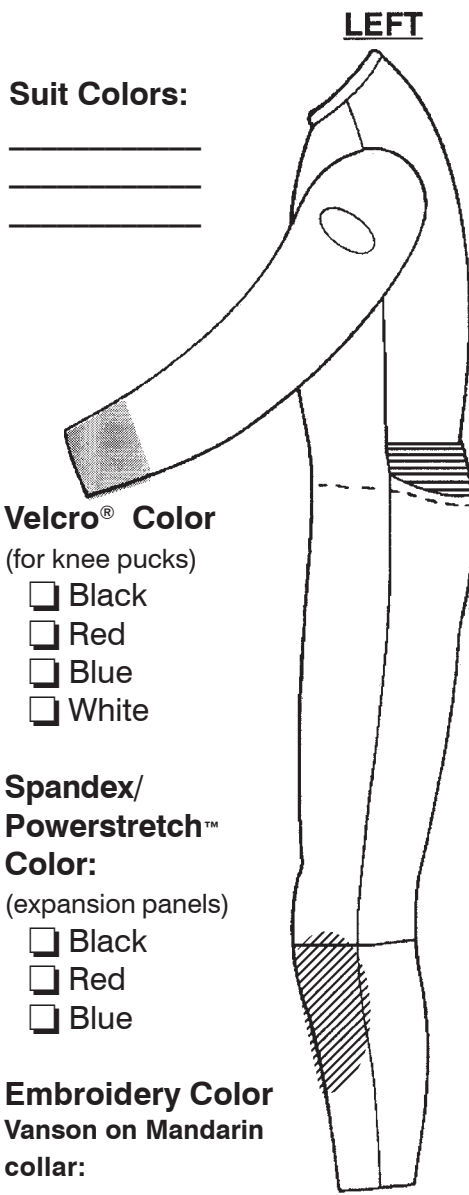
Symmetrical Inlay (side to side symmetry) are priced as \$100.00 top and \$100.00 bottom.

Asymmetrical Inlays (no symmetry side to side) are \$150.00 top and \$150.00 bottom.

NOTE:

Changes to your order after we have receive it may affect our scheduling.
 Changes made after certain production steps may also incur extra charges.

Top inlay total	\$
Bottom inlay total	\$
TOTAL FOR INLAYS	\$



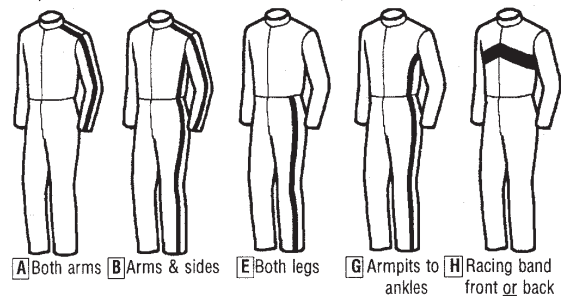
Remember, you can change colors at any seam line for no extra charge!

Oval Colors

Thread	Oval

STRIPE MATRIX Choose stripe pattern you want and location.
Example: A4=2 inch (#4) going down arms (A). Cost \$30.00

Non standard widths are priced as next widest standard stripe.
Stripes over 3" wide are an "inlay" see previous page for costing.



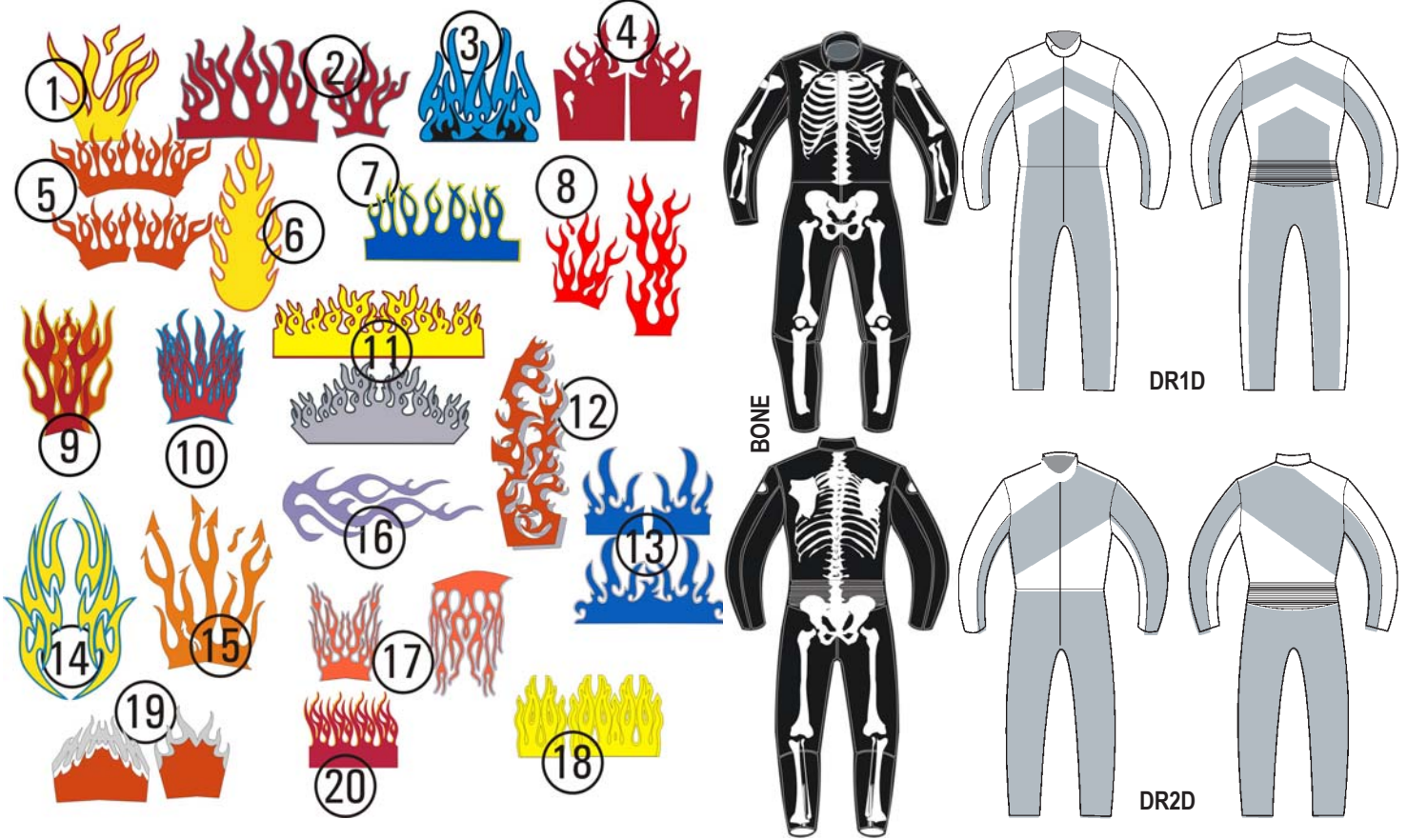
STRIPE STYLE	LOCATION ON SUIT (see diagrams to left)				
	A	B	E	G	H
1 Single, 1 inch stripe	\$25.00	\$50.00	\$30.00	\$40.00	\$30.00
2 Twin, 1 inch stripe	\$50.00	\$100.00	\$60.00	\$75.00	\$60.00
3 Triple stripe 2 color	\$75.00	\$125.00	\$90.00	\$115.00	\$90.00
4 Two inch stripe	\$30.00	\$55.00	\$35.00	\$45.00	\$35.00
5 Three inch stripe	\$35.00	\$60.00	\$40.00	\$50.00	\$40.00
6 Checkered stripe	\$150.00	\$250.00	\$165.00	\$190.00	\$165.00
STRIPES TOTAL \$					

Note: 3M® Reflective tape is offered in any stripe or pattern design as long as it can be done. This is a difficult material to work with.
Foil and Solar leather 15% extra.

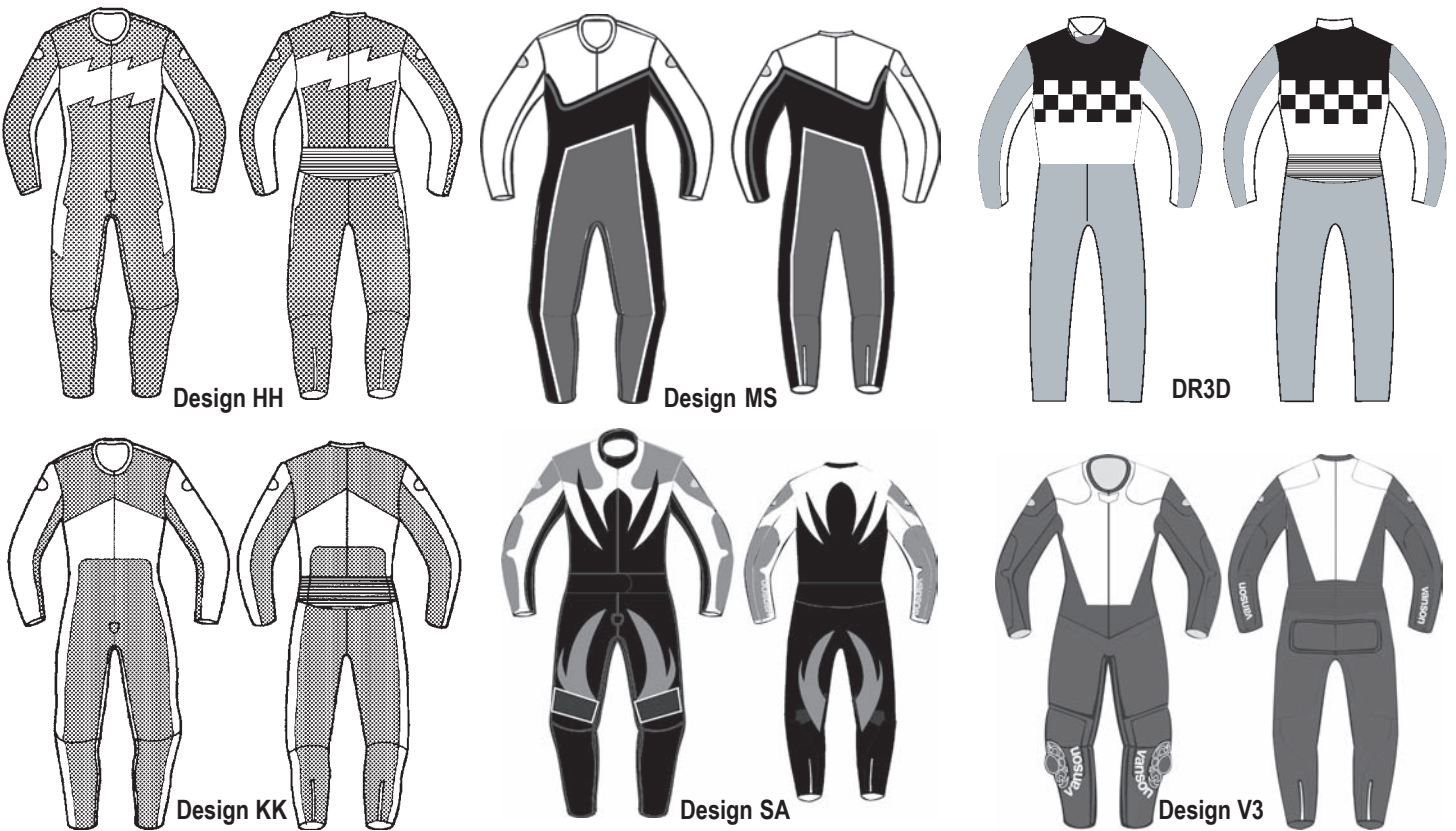
4 Design Suggestions

Graphic design shown here are additional to the cost of the suit. Call [508]678-2000 for pricing and other choices.

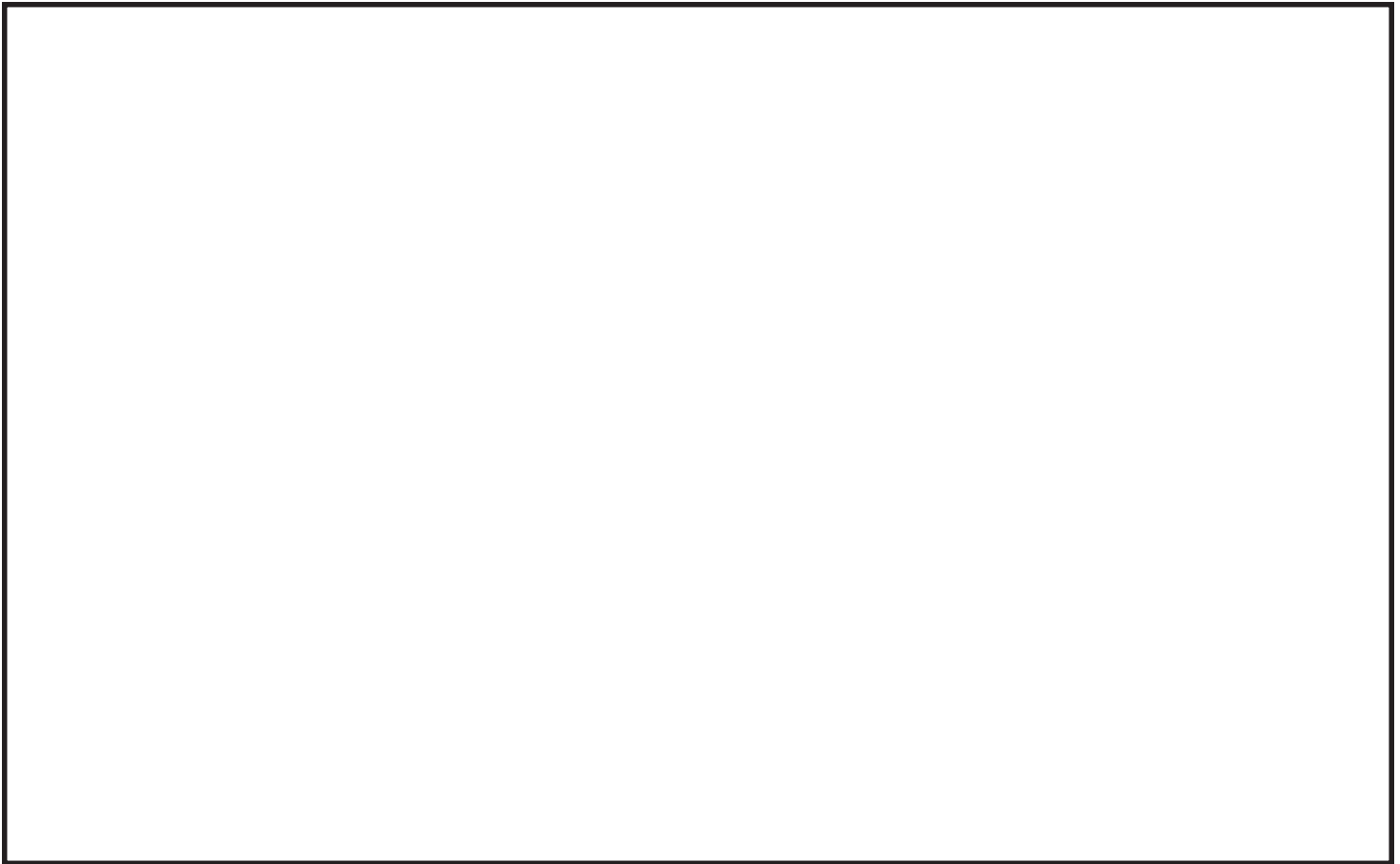
Please Note: representation of these designs may have to be varied dependant on the suit type and the options you choose to have included in you suit. The #9 flame must be 2 colors minimum without an outline. #9 flame are a 3 color flame. Please do not pick only 2 colors for #9.



For information on stripe options and pricing, see "Stripe Style" section.



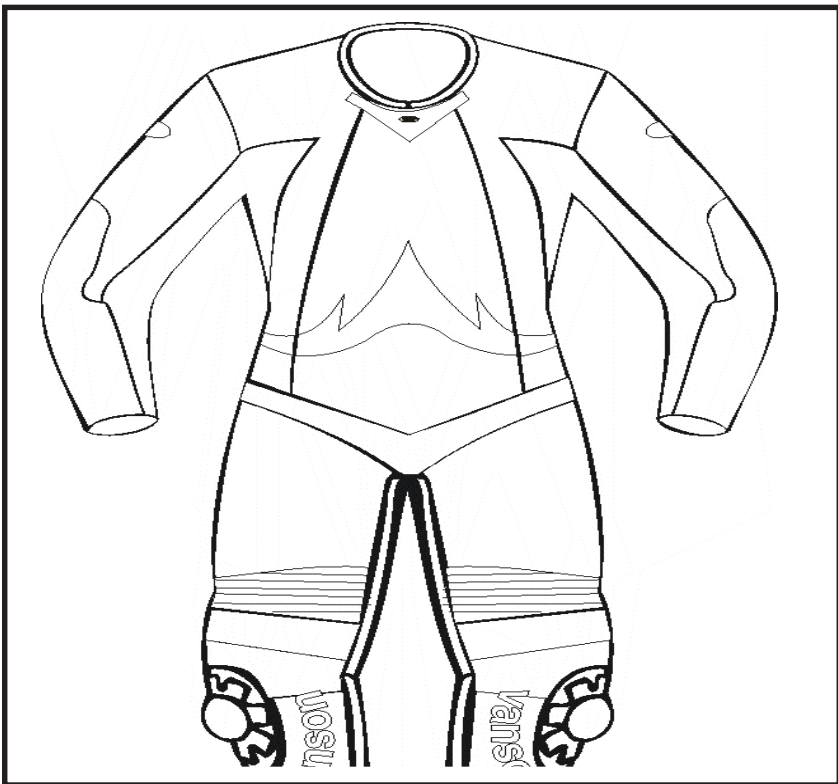
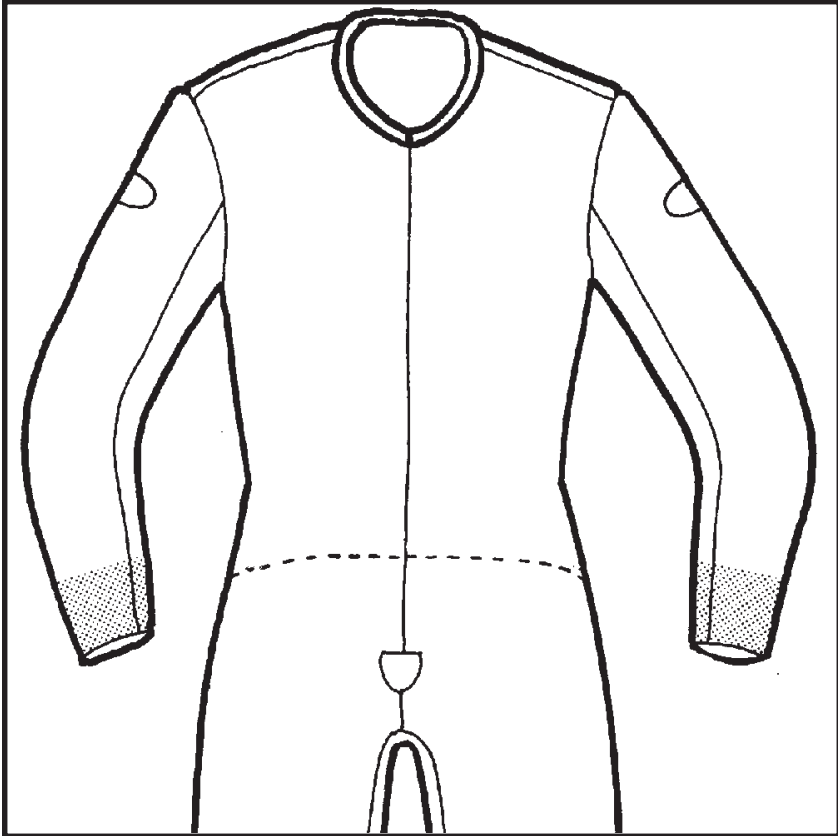
5 Draw or Attach Your Logo Here



LOGOS & TRADEMARKS Send clear & precise artwork. We will advise you of cost.				COLOR(S)	LOCATION	Total no. of logos	TOTAL
		Logo					
		Logo					
		Logo					
Logos TOTAL \$							

vanson in logo style letters can be added for no additional charge on suits only.				COLOR(S)	LOCATION	Total no. of logos	TOTAL \$
1 1/4"		Logo	vanson				
2"		Logo	vanson				
		Logo	vanson				
		Logo	vanson				
LETTERS, NUMBERS & LOGOS TOTAL \$							

5 Sponsor Patch Placement



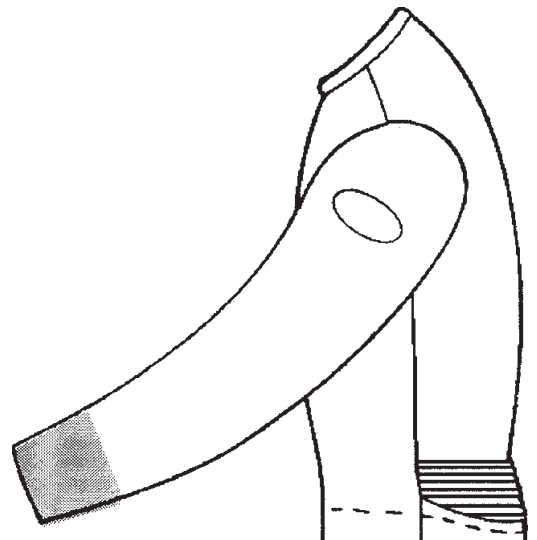
Vanson Leathers is not responsible for supplying sponsor patches.

Design Notes: _____

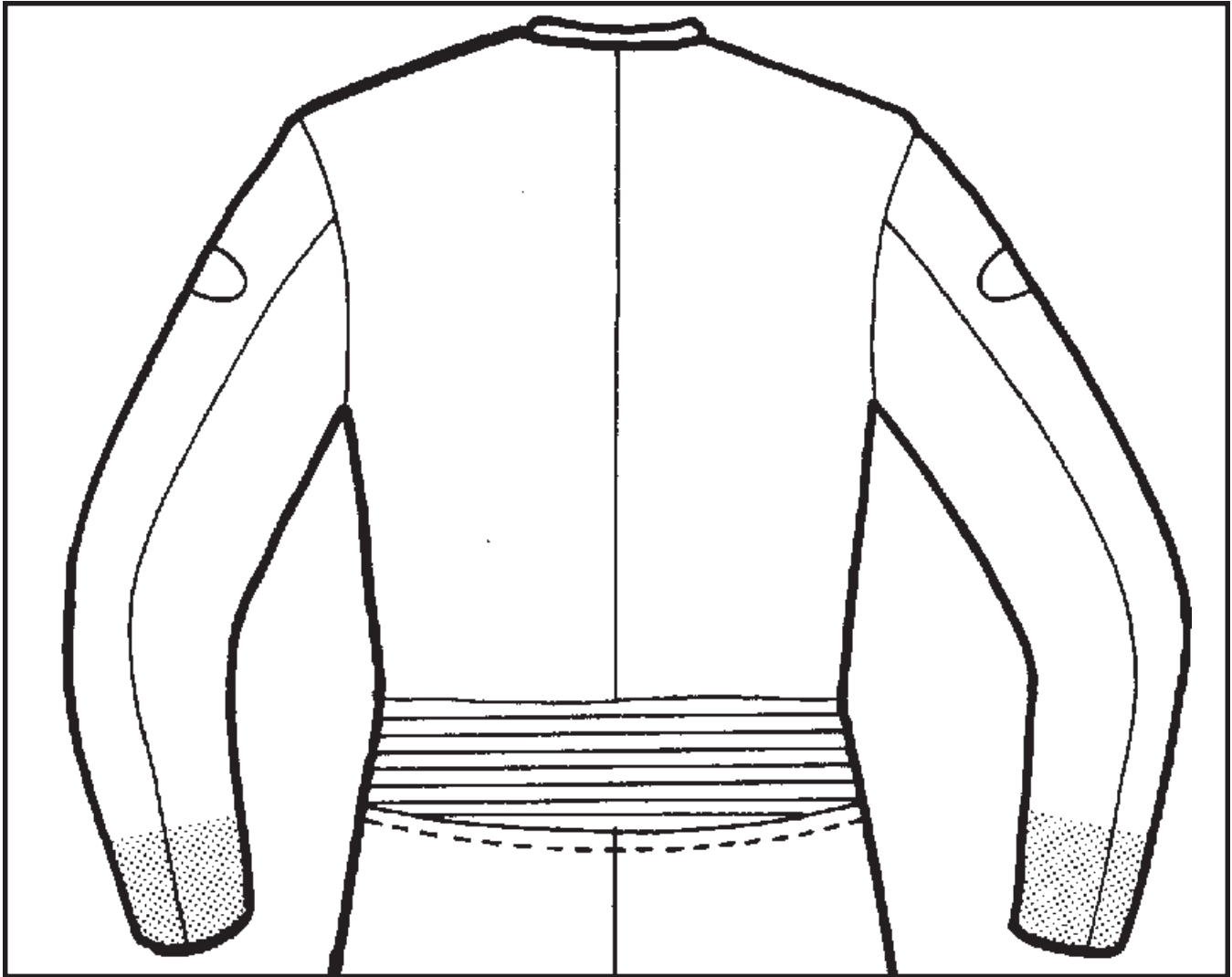
Customer Signature _____

Please send all sponsor patches to Vanson with your order.

List Sponsors:



5 Lettering, Sponsor Patch Placement and Logo Design



FIT NOTES - WHAT STYLE BIKE ARE YOU RIDING?

1). Are you a body builder? No Yes

2). Are there any existing physical conditions that should be allowed for in the fit of this suit? If Yes, describe. _____

3). Are you measuring over any braces/armor? If Yes, describe. _____

4). What type/manufacture spine pad do you wear?

5). Do you have a belly? Please circle the one that best fits you.
 Medium Large Xlarge

Riding Position - Drag Race

Upright Race Tuck Laydown

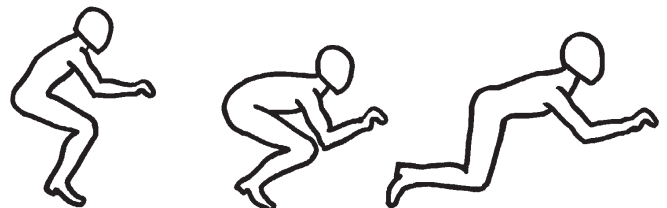
Riding Position - Street or Road Race

Super Sport 250 GP Sidecar

Handlebar Position - Check One

Drag Bars Clip-ons Low Rise Sport Bars

Race Tuck Extreme Tuck Laydown



Vanson does not recommend the use of non Vanson Armor in a Vanson suit.

6 Take Your Measurements

GENERAL INSTRUCTIONS:

- * **Never measure yourself.** Get someone else to help you.
- * For taking measurements, wear jeans that fit you comfortably but snugly and a t-shirt. Empty contents of pockets. Pull up pants for snug fit. Remove belt.
- * On measurements marked with **X**, use **Vanson Measuring Device** (see below). **Another tape will also be required** for measuring.
- * Pull tape measure snug. **DO NOT allow extra** in your measurements.
- * Vanson race suits are purposely designed for comfort and ease of movement **in the race position**. They are designed to be worn over minimum clothing. They may not feel comfortable while standing or walking. **They are not designed for touring or pedestrian use.**

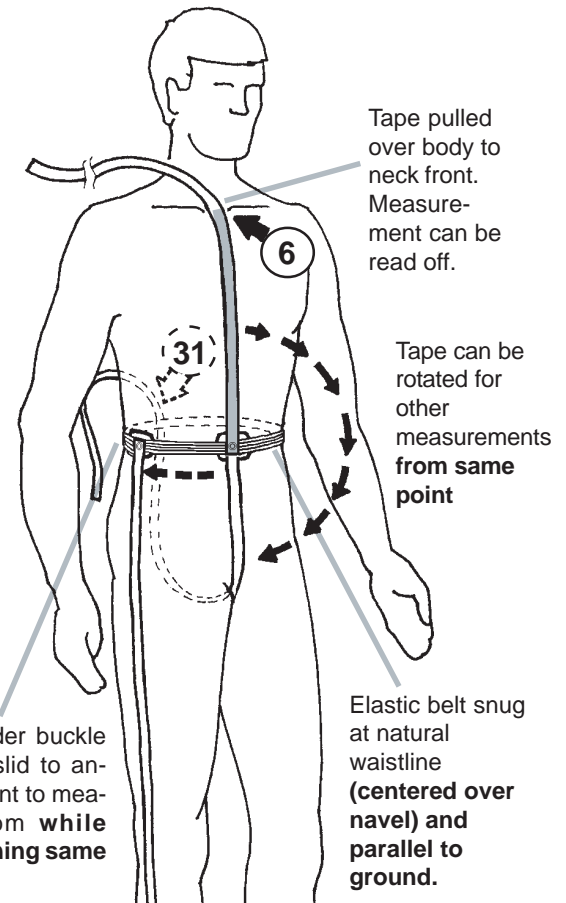
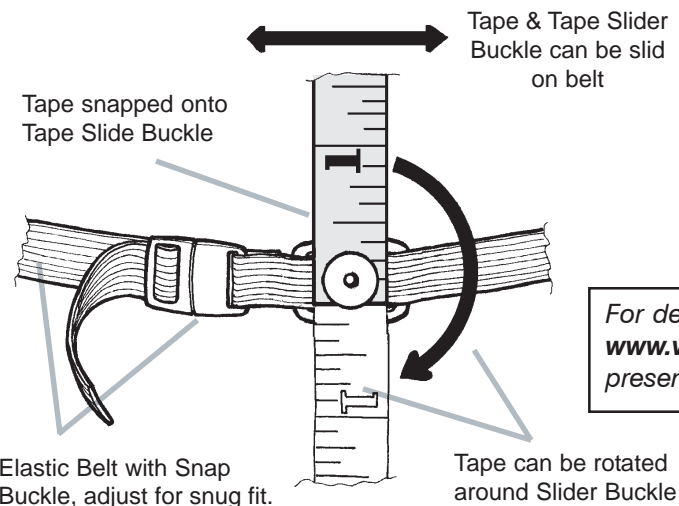
Follow instructions carefully, use the Vanson Measuring Device where marked x. Always have someone else measure you.

HOW TO USE THE VANSON MEASURING DEVICE

- * This device is designed to assist you in obtaining consistent measurements. This is of utmost importance in order for us to make your suit fit as it should. Use on measurements marked **X**.
- * Secure the **elastic belt** part of the device around waist at **navel**. Make sure **belt is parallel to ground**.
- * The elastic should be a snug fit so it does not move up and down easily when you rotate the **tape** or slide the **tape slider buckle**.
- * You can now snap the tape to the tape slider buckle.
- * Have someone run the tape over your body to the point you need to **measure to**, and read off then write down the measurement.
- * Rotate tape for other measurements that are **from the same point**. For other **measure from points**, slide tape slider buckle.

Make sure elastic belt does not move accidentally during measuring process.

If you have questions, call Vanson's help line (508) 678-2000



Vanson Measuring Device in use.

Example shows measuring neck front (6) to natural waistline (navel). Other measure point example shown is (31)

For detailed visual instructions, please check our web site at: www.vansonleathers.com and click on custom garments to go to the presentation at: www.vansonleathers.com/measure1/contents.htm



For detailed visual instructions, please check our web site at:
www.vansonleathers.com and click on custom garments to go to the
presentation at: www.vansonleathers.com/measure1/contents.htm

Some suggestions on taking good measurements and using our Measurement Check Sheet

1. Wear a pair of *tight fitting jeans* (with empty pockets) and a t-shirt.
(Please note on form if measurements are taken over different style clothing ie: shorts or sweat pants).
2. Stand up straight. Look straight ahead, do not look at the person measuring you.
3. Position the elastic belt at the natural waistline (over the navel).
Be sure the elastic belt is parallel to the floor and that it does not move during the process.

On the next page, you will find a measurement check sheet. This is not a guarantee that you will not need to re-do any measurements, but helps to eliminate and/or identify incorrect measurements. Take the time to calculate your measurements and compare them. You are allowed 1" difference plus or minus on your nape of neck to wrist measurement (#12) and 1/2" margin of error on all others. Please remember that you cannot measure yourself. This is a two person operation!

A few helpful hints for the measurer:

When measuring the total torso (#39), you go from the hollow in the neck, through the legs and up to the vertebrae that protrudes from the base of the neck. (On some people it is hard to find. Have them look down and it will be easier to locate that vertebrae. After locating the vertebrae, have them straighten up and look forward before you take the measurement.) **Make sure to follow the contours of your body, front & back.**

When measuring the rise (#31), you go from the navel through the legs and to the same point as navel on your back.

When measuring the inseam, follow the seam on their snug jeans. If their jeans are baggy (which is not recommended) have them hold the corners of their pockets and lift until the jeans are snug in the crotch area. To find the center of the knee, have them bend their leg and follow crease to center. Do not allow the subject to move at all as all the measurements are critical and inter-related.

When measuring across the shoulders a good reference (if the shoulder bones are not apparent) is to follow the underarm crease up to the top of the shoulders. You are looking for the upper seam of your arm socket. When you are doing your sleeve length and nape of neck to wrist be sure and use the same reference points.

The hip (#24) measurement is the fullest measurement around their rear.

To obtain an accurate bent knee circumference (#37), first place tape loosely around knee then have them get in their riding position. It is best to get on the bike or to simulate a bike by sitting on a chair and bending leg into the riding position.

Measurement Check Sheet - double check your measurements on this sheet

**FRONT
TORSO**

#6

+

#29

=

#30

MEASUREMENT
TAKEN

TOTAL

TOTAL TORSO
MEASUREMENT
TAKEN

+

↓

TOTAL
TORSO
CALCULATED
TOTAL OF
#30 & #33

#8

+

#32

=

TOTAL

**BACK
TORSO**

#33

MEASUREMENT
TAKEN

**TOTAL
TORSO
Check
#2**

#6

+

#8

+

#31

=

#39

MEASUREMENT
TAKEN

TOTAL

Note: To insure accuracy all measurement checks should come to within 1/2" of the measurement taken.
#12 Nape of Neck to Wrist measurement must be within 1" of measurement taken.

OUTSEAM

#18

+

#28

=

#17

MEASUREMENT
TAKEN

TOTAL

**NAPE
OF
NECK
TO
WRIST**

#10

÷ 2 =

+

#11

=

+

1.50

=

#12

MEASUREMENT
TAKEN

TOTAL

#29

+

#32

=

TOTAL

**TOTAL
RISE**

#31

MEASUREMENT
TAKEN

#27

INSEAM

+

#28

=

TOTAL

#26

MEASUREMENT
TAKEN

6 Custom Measurements

Vanson Use:
 Initials of sales person
 taking measurements Date

If you wear a spinepad or blast vest other than what comes with a Vanson suit please measure with armor on and place in dashed boxes were indicated.

(You must perform all Measurement Checks before we will accept a custom order)

1) Neck
 Around neck, just below Adam's apple.

2) Upper Chest
 Across front only, from arm/chest crease to arm/chest crease (or where arm contacts chest), about 3" below base of neck.

3) Chest
 Around fullest part with the tape high up under arms with arms at sides (for women, around fullest part of bust).

X 4) Waist
 At navel, where you have the elastic belt of the Vanson Measuring Device, make sure your tape is parallel to the floor.

5) Beltline
 Around body at top of pants waistband, but not over the belt.

X 6) Waist to Neck, Front
 From the waist at navel (move **tape slide buckle** along elastic belt to point shown in fig. 1) to the top of the rib cage.

7) Neck to Beltline, Front
 From top of the rib cage to top of pants (waistband).

X 8) Waist to Neck Back
 From the waist (move **tape slide buckle** along elastic belt to point shown in fig. 2) to base of neck (where the vertebrae protrudes from the spine).

9) Neck to Beltline Back
 From the base of neck (where the vertebrae protrudes from the spine) to the top of pants (waistband).

10) Across Shoulders
 Straight across from shoulder bone to shoulder bone.

11) Sleeve Length
 From one shoulder bone (same as #10) to center of wrist bone with arm by side

12) Nape of Neck to Wrist
 Place fist in front of chest keeping arm parallel to floor. Take measurement from base of neck (where the vertebrae protrudes from the spine) around bent elbow to wrist bone.

13) Wrist to Inner Elbow
 Bend arm, find crease, measure from crease line to center of wrist bone with arm straight down.

14) Bicep
 With muscle flexed around widest part.

15) Forearm
 With muscle flexed around widest part, about 2" down from elbow crease.

16) Wrist
 Around wrist bone at center of wrist.

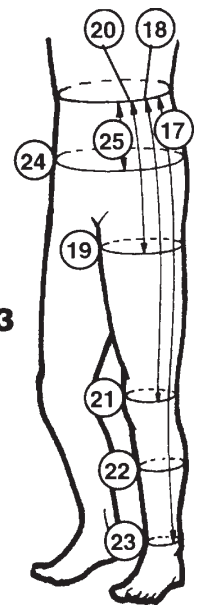
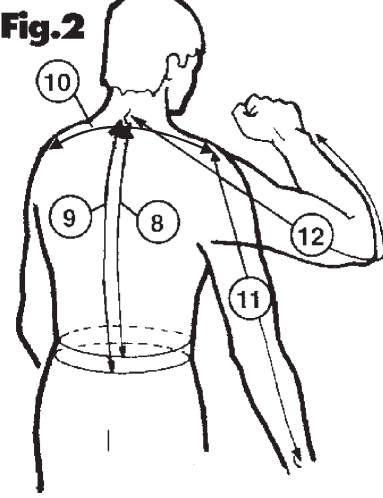
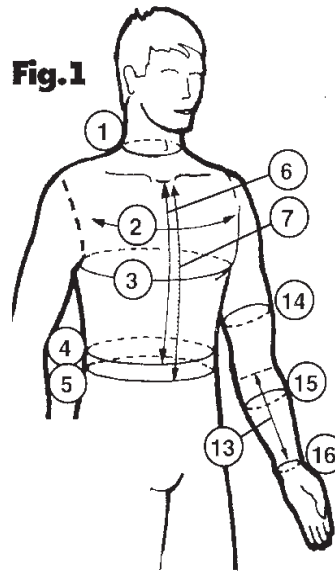


Fig. 3

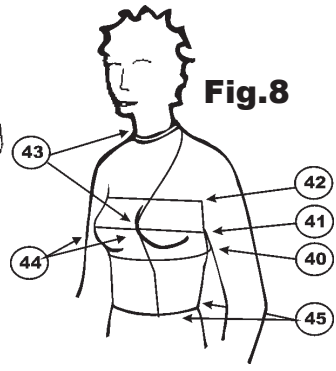


Fig. 8

X 17) Outseam from Waist
 From waist (move **tape slide buckle** along elastic belt to point shown in fig. 3) down outside of leg to center of anklebone with tape against body.

X 18) Waist to Knee
 From waist (move **tape slide buckle** along elastic belt to point shown in fig. 3) down outside of leg to center of knee at side.

19) Thigh
 Around thigh about 2" below crotch with tape parallel to floor.

X 20) Waist to Thigh
 From waist (move **tape slide buckle** along elastic belt to point shown in fig. 3) down leg to where you have just taken thigh measurement (#19).

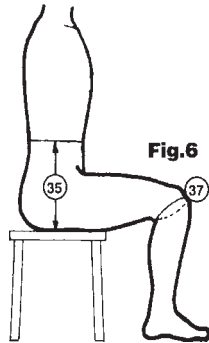
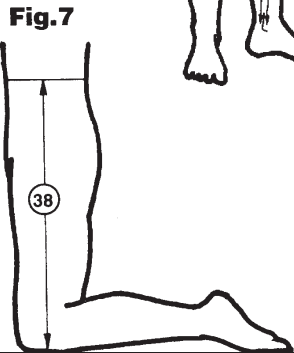
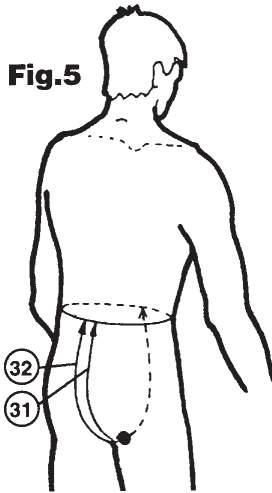
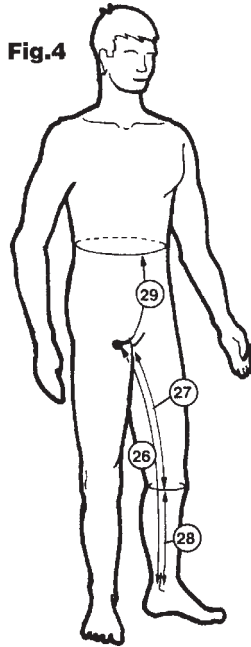
21) Knee
 Around center of knee with leg straight.

22) Calf
 Around fullest part of calf, or over boot if worn under leathers.

Name _____ Male Female

Height _____ Weight _____ Age _____

(Be as accurate as possible when measuring your height)



Note: DR2 suit only - circle one: **Tight Snug Comfort**

X 31) Front and Back Rise
 From waist back (move **tape slide buckle** along elastic belt to point shown in fig. 5) to waist front (where you have centered the elastic belt of the Vanson Measuring Device), between legs with pants pulled up snug.

X 32) Waist to Crotch, Back
 From waist back (move **tape slide buckle** along elastic belt to point shown in fig. 5) to crotch seam with pants pulled up snug.

33) Crotch to Neck, Back
 From crotch seam to base of neck (where vertebrae protrudes from spine). Take this measurement with pants pulled up snug and hold tape against body.

X 34) Waist to neck, Front Seated
 From waist front (Belly Button) to hollow at base of neck.

X 35) Crotch Depth
 Sit on flat surface. From waist at side seam (move **tape slide buckle** along elastic belt to point shown in fig. 6) to the flat surface you are sitting on.

36) Neck to Beltline, Bent Over
 From beltline at back (top of pants) to base of neck (where vertebrae protrudes from spine) in the riding position.

37) Knee Circumference, Bent
 Place tape around knee with leg straight. Bend knee, allow tape to get longer knee, take measurement (fig 6).

X 38) Waist to Floor, Kneeling
 From waist at side seam (move **tape slide buckle** along elastic belt to point shown in fig. 7) to the floor along outseam while kneeling.

23) Ankle
 Just above anklebone, or over boot if worn under leathers.

24) Hips
 Around fullest part, parallel to floor, about 7" below waist line.

X 25) Waist to Hips
 From waist (move **tape slide buckle** along elastic belt to point shown in fig. 3) down outseam to point where #24 was taken.

26) Inseam
 From crotch seam down inside of leg to anklebone (pull pants up snug before measuring).

27) Crotch to Mid-knee
 From crotch seam down inside of leg to center of knee while standing with pants pulled up snug.

28) Knee to Ankle
 From center of knee to center of anklebone along inseam.

X 29) Waist to Crotch, Front
 From waist front (move **tape slide buckle** along elastic belt to point shown in fig. 4) to crotch seam with pants pulled up snug.

30) Crotch to Neck, Front
 From crotch seam to neck hollow with pants pulled up snug.

39) Total Torso
 From base of neck, front through legs with pants pulled up snug to base of neck at back. This is #30 + #33 = #39

Women only see Fig 8
40) Circumference
 Measure just Underneath bust.

41) Circumference
 Measure around widest portion of the bust

42) Circumference
 Measure just above bust

43) Back of neck to widest part of bust
 Bone at base of back of neck around to apex of bust

44) Apex to Apex
 Measure across the bust from apex to apex ...

45) Waist Front to Waist Back
 Measure from front waist (the elastic belt) directly over the apex to the shoulder point and back down to the elastic belt in back.

FAQ

Which suit best fits my needs?

VO93, VE93, V932 and VL93- These suits are purpose built Road Racing suits.

RR-1-This suit can be used for Vintage Road Racing and Long Boarding.

RR-2-This suit can be used for Vintage Road Racing and Dirt Tracking.

RR-12-This suit is made for Road Racing and Side Car Racing.

RR-22-This suit is made for Road Racing, Dirt Tracking, Long Boarding and Side Car Racing.

DR-1-This suit is made for Drag Racing.

DR-2-This suit is made for Drag Racing and can be used for Dirt Tracking.

DRL2-This suit is made for Drag Racing and can be used for Dirt Tracking.

SMO2-This suit is made for Super Motard Racing, it can be used for Dirt Track Racing and Vintage Road Racing.

SM22-This suit is made for Super Motard Racing and can be used for Dirt Tracking racing and Vintage Road Racing.

Special Notes:



Custom Racing Suits

U.S. Made . . . experience the best!

951 Broadway, Fall River, MA 02724

Phone (508) 678-2000 • Fax (508) 677-6773

E-Mail: vanson@vansonleathers.com • Web Site: www.vansonleathers.com

Measurements taken by _____ Date and location _____

Order Form

After verification of measurements, we guarantee the fit at no extra charge!

Type or print clearly. Fill out all the relevant sections. Be sure to read this form carefully, including the terms and conditions section.

All orders must be signed and accompanied by a 50% deposit. DUE DATE MAY CHANGE WITHOUT NOTIFICATION.

Prices subject to change without notice before receipt of order.

SUIT STYLE #	SUIT COLOR(S)	Vanson use only
		P. O. #

Salemsans #	Pick Up or Ship	Order Date	Office Use Date Order Received
Dealer #		Due Date	

Dealer Name _____

Customer's Name (if different from above) _____

Shipping Address _____

City _____ State _____ Zip _____

Dealer Phone (____) _____ Customer W. Phone (____) _____

Email _____ Customer H. Phone (____) _____

Birth Date ___/___/___ (used for Cust #) First Race Date Needed ___/___/___

Method of Payment: VISA MasterCard AMEX Discover
 MoneyOrder Check Checknumber _____

AMEX, Discover, VISA or MasterCard # _____

Exp. Date _____ CVC Code _____

Authorizing Signature _____

CALCULATE COST		For Vanson Use
Add the totals from each section of this form		
1 Basic Suit	\$	
2 Options	\$	
3 Graphic Design	\$	
4 Stripes Etc.	\$	
5 Letters & Numbers	\$	
Custom Fee	\$	
Total	\$	
Rush Charge (+20%)	\$	
MA res. add sales tax	\$	
Credit on file. <input type="checkbox"/> TOTAL	\$	
Deposit 50%	\$	
	\$	
Shipping	\$	
BALANCED DUE	\$	

NOTE: If you change your order after we have received it your changes will affect our scheduling. Changes made after certain production steps will also incur additional charges.

TERMS AND CONDITIONS

All custom orders must be signed and be accompanied by a 50% deposit. This deposit is non-refundable once work has commenced on your order. A rush service is available for a 20% surcharge on the total price of the garment. This is intended to cover costs related to producing your garment within 15 working days. However, this is not a guaranteed service and is dependant on our existing backlog when your order is received. In the event we are unable to produce your suit within the specified time, the rush charge will be refunded. Accurate measurements are your responsibility.

Alterations due to inaccurate measurements are chargeable to

you. If the balance on the garment is not pre-paid, the garment will ship C.O.D. (cash or certified check) for the balance.

Custom orders are not refundable, if any changes or alterations are required to the garment, it must be returned within 30 days from the date shipped.

All designs submitted or made as a result of this order become the exclusive property of Vanson Leathers Inc. and may not be used for any purpose without the written permission of Vanson Leathers, Inc. Vanson Leathers, Inc. reserves the right to change and modify product specifications.

Note: Florescent and metallic finishes on leather are decorative and are not warrantied by Vanson. All metallic and florescent finishes are light sensitive and may fade in sunlight. All non drum dyed leather, including metallic and florescent finishes, cannot be refinished by Vanson.