



Custom Jackets & Pants

After verification of measurements, we guarantee the fit!

Quality...from Professionals

... for Professionals!

Vanson Leathers is run by motorcycle enthusiasts so we understand the needs of the motorcyclist. You depend on premium quality protective garments, fast, knowledgeable service, and trend setting styles and graphics.

Vanson Jackets and Pants are made from the same top-grain U.S. cowhide as our famous Custom Racing Suits (approximately 3 1/2 oz. per square foot and 1.5 mm). We are constantly developing new features and experimenting with new materials. This ensures that we can offer you the best products and service. Vanson offers a complete "menu" of options to choose from, allowing you to design the look and features you desire.

Index	Page
Jackets	2 - 4
Pants	5 - 7
Track-Street Combo	8 - 11
Letters and Numbers	12
Design Embellishments	13
Measurement Suggestions	14
How to Take your Measurements and do the Checks	15
Order Form	16

How to use this form

Select the **Style** of Jacket or Pant from our catalog. It is strongly recommended that you try the garment at your local dealer. There is a list of available **Options** listed for your garment. These **Options** are available at an additional cost to the base price of the Jacket or Pant you have chosen. Next, you can **Draw Your Own Design** in the space provided. Color selections can be made from Vanson's wide choice of drum-dyed colors. Sample leather color swatches are available upon request. To add a personalized touch to your jacket, **Lettering and Logos** can be added (if you plan to get creative i.e.: company logo/lettering, send a sketch of your proposed jacket with logo and lettering and we will work up a quote for you). Then, using the special **Vanson Measuring Device**, complete your custom measurements. Be sure to follow the directions carefully and fill out all the measurements in this section including the **Measurement Checks** to insure the accuracy of your measurements. In order to verify your measurements, it is important that you include your **Height, Weight, and Age**. Finally, turn to the back page of the form and complete your order by filling out the **Shipping Information** and adding the cost from each section to determine the **Total Cost** of your garment.

Note: Even if you think you fit into a standard size you **MUST** perform **ALL** measurements.





Custom Jackets

After verification of measurements, we guarantee the fit!

Jacket Options - Base Style _____

F.A.S. ARMOR		
attaches to inside of the Jacket with Velcro®. It can be easily positioned or removed through an armor access port in the lining.		
PR2	GP elbow forearm armor	59.00 pr
PRO4	Articulated scale back pad	89.00
PR1J	GP shoulder armor - jacket	55.00 pr
VA1V	VANTEC armor - shoulder	30.00 pr
VA2V	VANTEC armor - elbows	30.00 pr
VA3V	VANTEC armor - knees	30.00 pr
VA4V	VANTEC armor - back	50.00
SOFT ARMOR		
SA1	Street armor - shoulder	30.00 pr
SA2	Street armor - elbow/forearm	30.00 pr
CLOSED CELL PADDING (sewn inside backed with leather or mesh)		
1A	Elbows, oval shape	20.00 pr
1C	Spine	35.00
1E	Closed cell padding under 1D (applied outside patches)	10.00
1F	Elbow/forearm	20.00 pr
1H	Chest	50.00
1I	Bicep	25.00 pr
1S	Shoulders	25.00
HUMP	Slipstream Hump	190.00
POWERSTRETCH™ PANELS reduces bulk in same manner as spandex, but offers additional abrasion resistance. (Select blue, red or black.)		
39AK	Elbows, oval shape	35.00 pr
39FK	Elbow/forearm, keyhole shape	45.00 pr
39GK	Underarm, reduces bulk for tight tuck	45.00
39HK	1" strip from wrist to armhole	45.00 pr
VENTS (street use only)		
19	Rear, at sides under arms, as exits	25.00 pr
19A	Zip front, show location on Jacket diagram	40.00 pr
20	8 extra large grommets under each arm	15.00
19C	A.I.R. Ram vent sleeve vents	45.00
COLLARS		
15	RAF style collar (shirt style)	20.00
15A	Mandarin style with snap-back tab	20.00
15B	Real Sheepskin detachable collar	80.00
15C	Sheepskin collar - permanent	50.00
22	Beaded or bound style (with tab)	20.00
22A	Velcro® tab across top of front zipper	20.00
33	Mandarin with Velcro® closure	20.00
22B	Nehru open neck	22.00
56P	Epaulets + shoulder snap	20.00
56R	Epaulets + sewn into neckline	20.00
LININGS		
16	Zip in Zip out liner (ZIZO) Polar Fleece or similar	45.00 ea
17	Rayon lining	N/C
17A	Ventilated nylon mesh lining	N/C
17B	Quilt lining	N/C
17X	No lining at all - raw leather	N/C
17Z	Streamliner Vest snaps if not standard	20.00

HARDWARE		
55	Chrome hardware + zippers	N/C
55A	Brass hardware + zippers	N/C
55B	Black hardware + zippers (nylon)	N/C
55F	Two-way front zipper (brass)	per jacket 20.00
55N	Riveted leather zip pulls	per jacket 5.00
WAIST DETAILS		
56	Half belts sewn in side seams	40.00
56A	Full belt sewn to match jacket	50.00
56B	Full hard belt - laminated	70.00
56C	Beltloops inserted + body snap	20.00
56D	Beltloops - snap open	20.00
56E	Beltloops - stitched closed	20.00
56M	Sidebelts + beltlets	35.00
56N	Side lace panels	35.00
40b	Delete Waist band	N/C
	Change Velcro closure to hidden snaps	15.00
POCKETS (sketch location in section 4)		
6A	Inside lining open, right chest	20.00 ea
6B	Inside lining open, left chest	20.00 ea
6D	Inside (applied patch)	25.00 ea
6E	Leather lined pocket - snap	40.00
6F	Leather lined pocket - open	40.00
6G	Leather lined pocket - zip	40.00
6H	Leather facing pocket - snap	40.00
6I	Leather facing pocket - zipper	40.00
6J	Leather facing pocket - open	40.00
6M	Leather facing gun pocket	45.00
7	Outside pocket, zipper	20.00
7A	Outside pocket, snap	20.00
7C	Outside pocket, open	20.00
7D	Outside pocket, flap	25.00
7G	Leather lined outside pocket - zipper	45.00
7H	Leather lined outside pocket - snap	45.00
7I	Leather lined outside pocket - open	45.00
7M	Ignition key pocket on left sleeve	10.00
7N	Ignition key pocket on right sleeve	10.00
WRIST DETAILS		
11	Velcro closure tabs at end of zipper	15.00 pr
11B	Raw edge sleeve finish	60.00
14B	Wrist zippers along inseam	15.00
14C	Zipper at outseam (under the sleeve)	18.00 pr
14D	Wrist zips on top sleeve	15.00
14G	Knit cuffs - set up sleeve cuff	15.00
PERFORATIONS (for ventilation)		
20A	Front on body under arms	20.00 pr
20B	Perfs inside elbows	25.00
20F	Arm hole area	20.00 pr
20D	Entire upper chest to waist	60.00
46	Band across upper chest	35.00
46A	Biceps at top sleeve	20.00 pr
46C	Rear, at sides under arms, as exits	20.00 pr
46D	Rear, at side seams, shoulder to waist	35.00 pr

Oversized Leather garments (men's only):

Over sizes: from 48-54 in men jacket sizes plus 10%.

Over sizes: from 56-62 + 10 % + 100.00

Over sizes: from 64 up + 10% + 250.00



Custom Jackets

After verification of measurements, we guarantee the fit!

Get creative and draw your graphic design here.

PROper™ LEATHER PANELS

(more holes per inch than standard perfs)

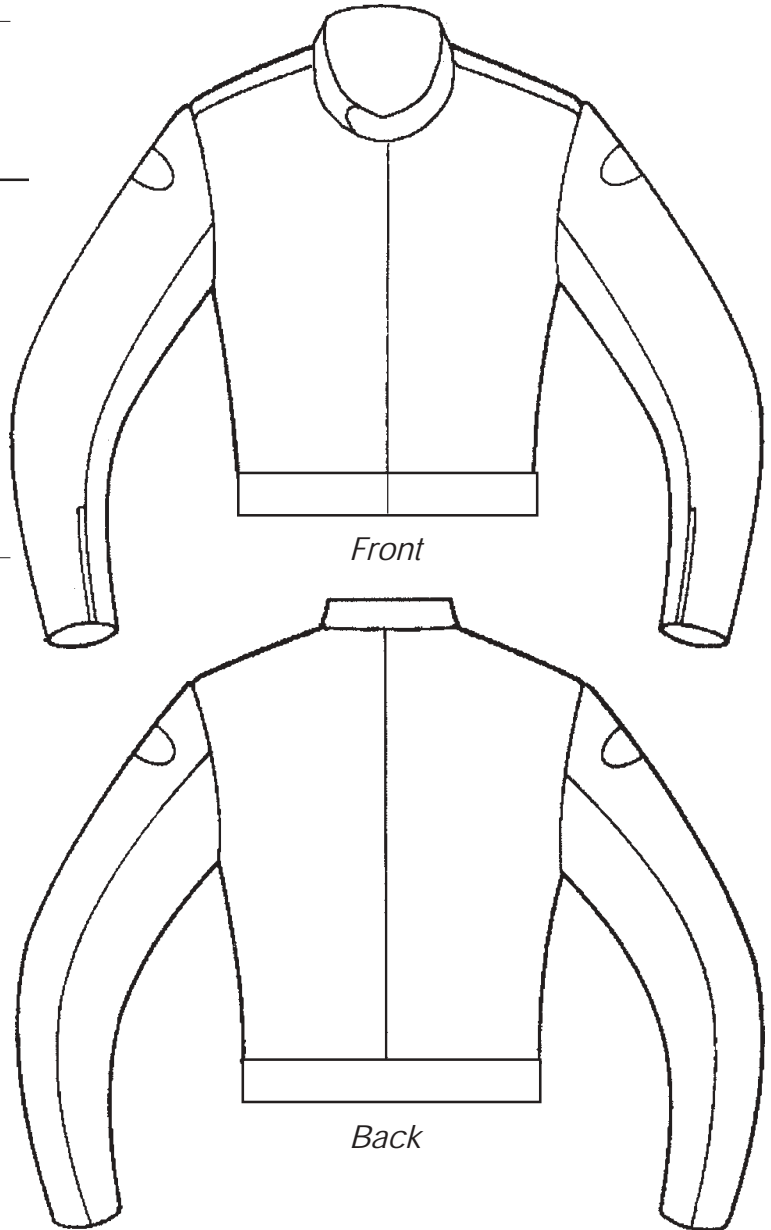
46PJ	Shoulder to waist band	25.00
46P	Shoulder seam to thigh seam	35.00
46E	Perforated under sleeve (3rd) panel	35.00 pr

PATCHES

1D	Applied outside leather elbow patches	25.00
4A	Inside leather elbow patches	25.00
4C	Inside leather shoulder patches	25.00
4D	Inside leather elbow/forearm patches	30.00
34	Applied shoulder patches - outside	20.00
23	Velcro® square on back	20.00
24	Leather square w/for #23	25.00
26	Sewing on patch with cover	8.00
26A	Vanson Oval - ADD - no charge item	N/C
26B	Sewing on patch - no cover	8.00
26T	Reflective Ovals	N/C
DVOJ	Delete Vanson Ovals [Jacket only]	N/C
EMBO	Embroidered Leather ovals	20.00

MISCELLANEOUS

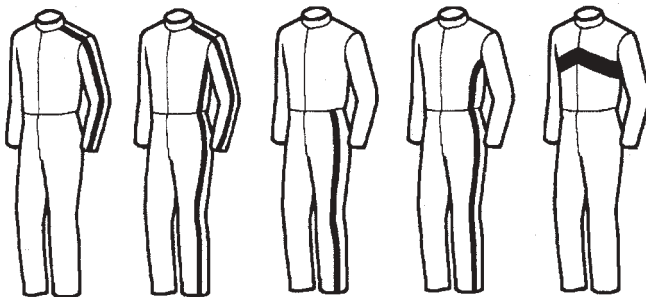
27A	Leather hang loop in leather facing	10.00
27B	Leather pen holder - on facing	8.00
28	Applied exterior windflap - snap	50.00
28A	Applied exterior windflap - Velcro®	50.00
28D	Over flap - extended front - Velcro®	50.00
28E	Over flap - extended front - snap	50.00
34P	Padding under shoulder patches	12.00
34Q	Diagonal stitching of shoulder patch	15.00
36P	Padding under shoulder diagonal stitching	15.00
37Q	Diagonal stitching - elbow patch	15.00
HBV	Hangers for Ballistic Vest	40.00
BA1	Fringe set into sleeve - outseam	50.00
BA2	Fringe set into jacket side seams	50.00
	Reflective piping(priced per seam)	10.00
WF	Add Wind Flap	35.00
DWF	Delete Wind Flap	N/C



STRIPE MATRIX: Choose stripe pattern and location

Example: 1" stripes down the sleeves would be A+1 or \$25

Non Standard Widths: Will be charged at the next larger standard stripe fee. Stripes over 3" wide will be inlaid into the garment. Ask for pricing.



A Both arms **B** Arms & sides **E** Both legs **G** Armpits to ankles **H** Racing band front or back

2 STRIPE STYLE	LOCATION ON SUIT [see diagrams to left]				
	A	B	E	G	H
1 Single, 1 inch stripe	\$25.00	\$50.00	\$30.00	\$40.00	\$30.00
2 Twin, 1 inch stripe	\$50.00	\$100.00	\$60.00	\$75.00	\$60.00
3 Triple stripe 2 color	\$75.00	\$125.00	\$90.00	\$115.00	\$90.00
4 Two inch stripe	\$30.00	\$55.00	\$35.00	\$45.00	\$35.00
5 Three inch stripe	\$35.00	\$60.00	\$40.00	\$50.00	\$40.00
6 Checkered stripe	\$150.00	\$250.00	\$165.00	\$190.00	\$165.00
STRIPE TOTAL \$					

Note: 3M® Reflective tape is offered in any stripe or pattern design as long as it can be done. **Foil and Solar leather add 15%.**

Custom Jacket Measurements

After verification of measurements, we guarantee the fit!

Vanson Use:
 Initials of sales person taking measurements Date

1) Neck
 Around neck, just below Adam's Apple.

2) Upper Chest
 Across front only, from arm/chest crease to arm/chest crease (or where arm contacts chest), about 3" below base of neck.

3) Chest
 Around fullest part with the tape high up under arms with arms at sides (for women, around fullest part of bust).

4) Waist
 At navel, where you have the elastic belt of the Vanson Measuring Device, make sure your tape is parallel to the floor.

5) Beltline
 Around body at top of pants waistband, but not over the belt.

24) Hips
 Around fullest part, parallel to floor, about 7" below waist line.

25) Waist to Hips
 From waist (move *tape slide buckle* along elastic belt to point shown in fig. 3) down outseam to point where #24 was taken.

6) Waist to Neck, Front
 From the waist at navel (move tape slide buckle along elastic belt to point shown in fig. 1) to the top of the rib cage.

7) Neck to Beltline, Front
 From top of the rib cage to top of pants (waistband).

8) Waist to Neck Back
 From the waist (move tape slide buckle along elastic belt to point shown in fig. 2) to base of neck (where the vertebrae protrudes from the spine).

9) Neck to Beltline Back
 From the base of neck (where the vertebrae protrudes from the spine) to the top of pants (waistband).

6A) Desired jacket length in front
 (looking in a mirror) From the top of the rib cage.

8A) Desired jacket length in back
 From nape of neck.

24A) Circumference around jacket length points

10) Across Shoulders
 Straight across from shoulder bone to shoulder bone.

11) Sleeve Length
 From one shoulder bone (same as #10) to center of wrist bone with arm by side

12) Nape of Neck to Wrist
 Place fist in front of chest keeping arm parallel to floor. Take measurement from base of neck (where the vertebrae protrudes from the spine) around bent elbow to wrist bone.

13) Wrist to Inner Elbow
 Bend arm, find crease, measure from crease line to center of wrist bone with arm straight down.

14) Bicep
 With muscle flexed around widest part.

Before starting measurements read page 14 for suggestions. Also, you MUST perform all related Measurement Checks before we will accept a custom order (see page 15)

Name _____ Male Female

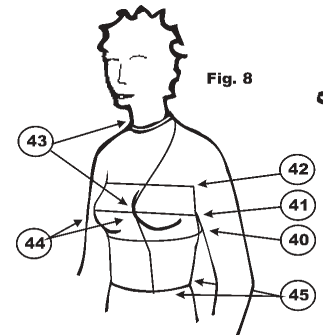
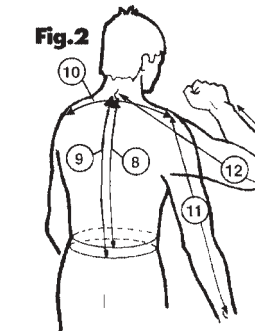
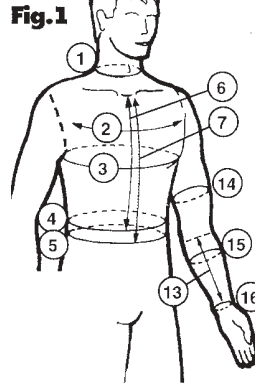
Height _____ Weight _____ Age _____

Address _____

City _____ State _____ Zip _____

Tel: _____ Fax: _____

Jacket Style _____



Measurement Check, Nape
 1) #10 ÷ 2 = _____
 2) answer 1 + #11 = _____
 3) answer 2 + 1 1/2" = #12 (+/-1")

15) Forearm
 With muscle flexed around widest part, about 2" down from elbow crease.

16) Wrist Fig.8
 Around wrist bone at center of wrist.

... *Women only*

40) Circumference
 Measure just underneath bust.

41) Circumference
 Measure around widest portion of the bust

42) Circumference
 Measure just above bust

43) Back of neck to widest part of bust
 Bone at base of back of neck around to apex of bust

44) Apex to Apex
 Measure across the bust from apex to apex ...

45) Waist Front to Waist Back
 Measure from front waist (the elastic belt) directly over the apex to the shoulder point and back down to the elastic belt in back.....



Custom Pants

After verification of measurements, we guarantee the fit!

Pants Options - Base Style _____

ARMOR		
SA3	Street armor - knee/shin	30.00 pr
PR3	GP knee/shin armor	55.00 pr
PRO5	Hip armor	30.00 pr
VA3V	VANTEC armor - knees	30.00 pr
CLOSED CELL PADDING (sewn inside backed with leather or mesh)		
1B	Knees, oval shape	20.00 pr
3	Hips	35.00 pr
1J	Shins	25.00 pr
1G	Seat	35.00
41F	Hip pads - soft, Velcro® to leather	35.00
41G	Hip/thigh pad - speedway/sidecar	70.00
5D	Knee padding - oval - inside rayon	20.00
5F	Hip padding - inside rayon	30.00
POWERSTRETCH™ PANELS reduces bulk in same manner as spandex, but offers additional abrasion resistance. (Select blue, red or black.)		
39BK	Knees, oval shape	35.00 pr
39DK	Knees, keyhole shape going to ankle	45.00 pr
39IK	1" strip on inseam, crotch to mid-thigh	55.00 pr
EXTRA LEATHER (sewn inside suit)		
4	Seat	30.00
2	Hips	25.00 pr
KNEE DETAILS & SLIDERS		
44	Leather expansion sections above knees for ease of movement	40.00 pr
21	Leather patch over Velcro® for street use (matches suit graphics, includes Velcro®)	40.00
21A	Knee pucks including Velcro® on suit	80.00 pr
21B	Velcro® patches only sewn to suit	40.00
21C	Replacement pucks only	40.00 pr
21D	Sidecar passenger seat or shoulder Velcro® patch with slider pucks (show placement on diagram)	75.00
WAIST DETAILS (RR2, RR22)		
40A	Suspender buttons, 4 sets of 2 sewn to suit pants waistband	15.00
40S	Suspenders	35.00
POCKETS (sketch location)		
7	Outside pocket, zipper	20.00 ea
7A	Outside pocket, snap	20.00 ea
7C	Outside pocket, open	20.00 ea
7D	Outside pocket, flap	25.00 ea
LININGS		
17X	No lining at all - raw leather	N/C
HARDWARE		
55	Chrome hardware + zippers	N/C
55A	Brass hardware + zippers	N/C
55B	Black hardware + zippers (nylon)	N/C

PERFORATIONS (for ventilation)		
20E	Waist to crotch	35.00
46B	Thighs, inseam between crotch & knee	20.00 pr

PROper™ LEATHER PANELS (more holes per inch than standard perfs)		
46PP	Perforated waist to thigh seam	20.00
20Q	Thigh seam to above knee expander	35.00
20R	Thigh seam to end of knee expander	35.00
20T	Back of calf, knee to ankle	15.00 pr
20X	Perforated front of calf, knee to ankle	20.00
20Z	Perforated back expander	20.00

PATCHES		
35	Applied outside hip patches	25.00
35P	Padding under applied hip patch	12.00
35Q	Diamond stitching on hip patch	15.00
38	Applied outside knee patches	25.00
38P	Padding under applied knee patch	12.00
38Q	Diamond stitching on knee patch	15.00
4B	Inside leather knee patches	25.00

ANKLE DETAILS		
13	8" zipper sewn on outseam	20.00 pr
13A	10" zipper (placed to fit)	20.00 pr
13B	12" Velcro® closure - rear leg	20.00
14	Ankle zippers behind legs	20.00
14A	Ankle zippers 8" inseam	20.00
KHSL	Kevlar heat shield leg panel	145.00
KS	Kevlar stirrups - pant bottoms	30.00
BOOT	Boot cut	25.00
TAPR	Tapered cut	35.00

MISCELLANEOUS		
28	Applied exterior windflap - snap	50.00
28A	Applied exterior windflap - Velcro®	50.00
28D	Exterior front over flap - Velcro®	50.00
28E	Exterior front over flap - snap	50.00
BA3	Fringe - outseam	50.00
DPP	Delete Pant Pocket	N/C
	Reflective piping(priced per seam)	20.00

Note: Please specify if you wish to use the GP hard armor in your pants so we may modify the fit accordingly.

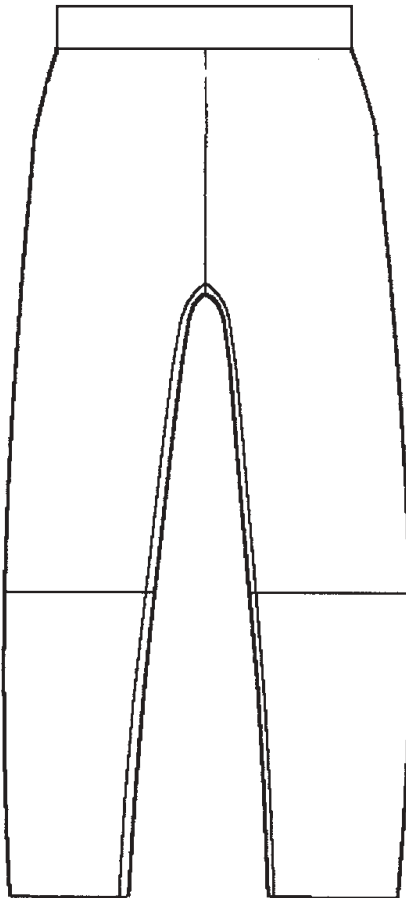


Custom Pants

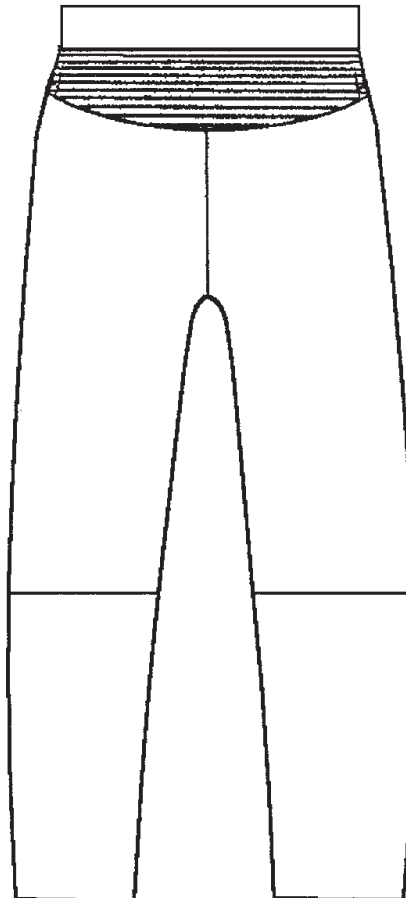
After verification of measurements, we guarantee the fit!

Get creative and draw your graphic design here.

Front

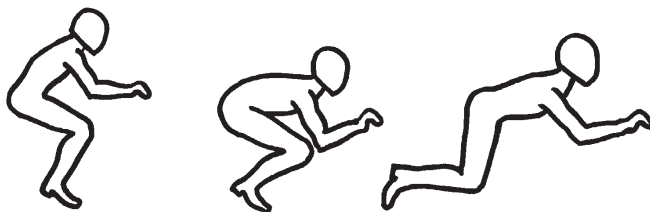


Back



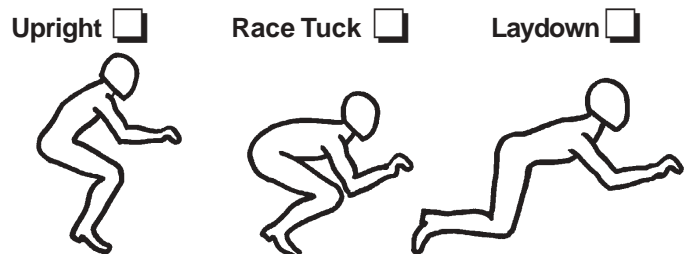
FIT NOTES

Riding Position - Street or Road Race



Super Sport 250 GP Sidecar
 Race tuck Extreme tuck Lay down

Riding Position - Drag Race



Upright Race Tuck Laydown
 HANDLEBAR POSITION- check one
 Drag Bars Clip-ons Low rise sport bars

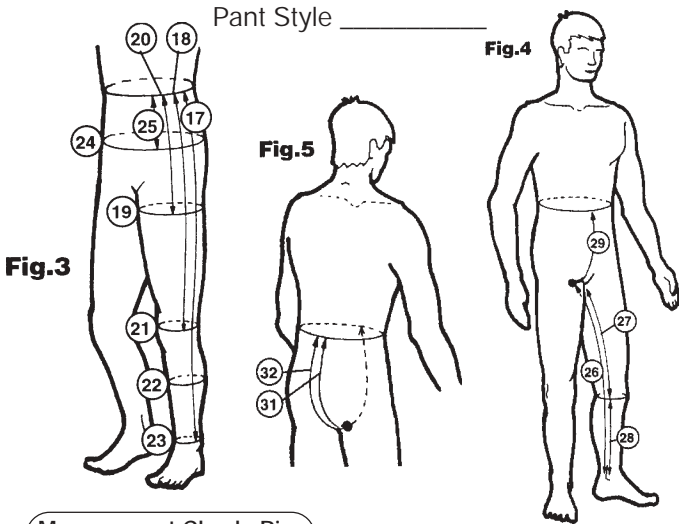
- 1). Are you a body builder? No Yes
- 2). Are there any existing physical conditions that should be allowed for in the fit of this garment? If Yes, describe.

- 3). Are you measuring over any braces/armor? If Yes, describe.

Before starting measurements read page 14 for suggestions. Also, you MUST perform all related Measurement Checks before we will accept a custom order (see page 15)

Name _____ Male Female
 Height _____ Weight _____ Age _____
 Address _____
 City _____ State _____ Zip _____
 Tel: _____ Fax: _____

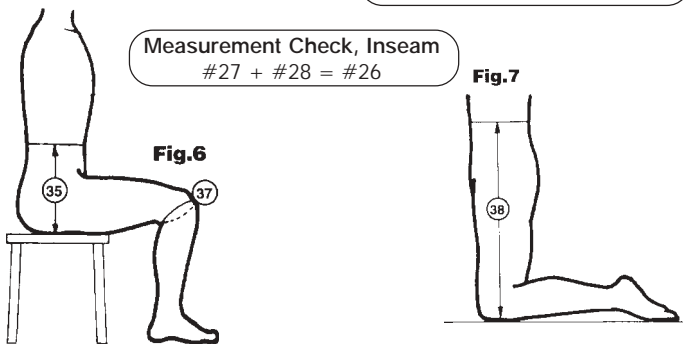
Pant Style _____



Measurement Check, Rise
 $\#29 + \#32 = \#31$

Measurement Check, Outseam
 $\#18 - \#28 = \#17$

Measurement Check, Inseam
 $\#27 + \#28 = \#26$



- 4) Waist
 At navel, where you have the elastic belt of the Vanson Measuring Device, make sure your tape is parallel to the floor.
- 5) Beltline
 Around body at top of pants waistband, but not over the belt.
- 24) Hips
 Around fullest part, parallel to floor, about 7" below waist line.
- 25) Waist to Hips
 From waist (move **tape slide buckle** along elastic belt to point shown in fig. 3) down outseam to point where #24 was taken.
- 19) Thigh
 Around thigh about 2" below crotch with tape parallel to floor.
- 20) Waist to Thigh
 From waist (move **tape slide buckle** along elastic belt to point shown in fig. 3) down leg to where you have just taken thigh measurement (#19).

Custom Pants Measurements

After verification of measurements, we guarantee the fit!

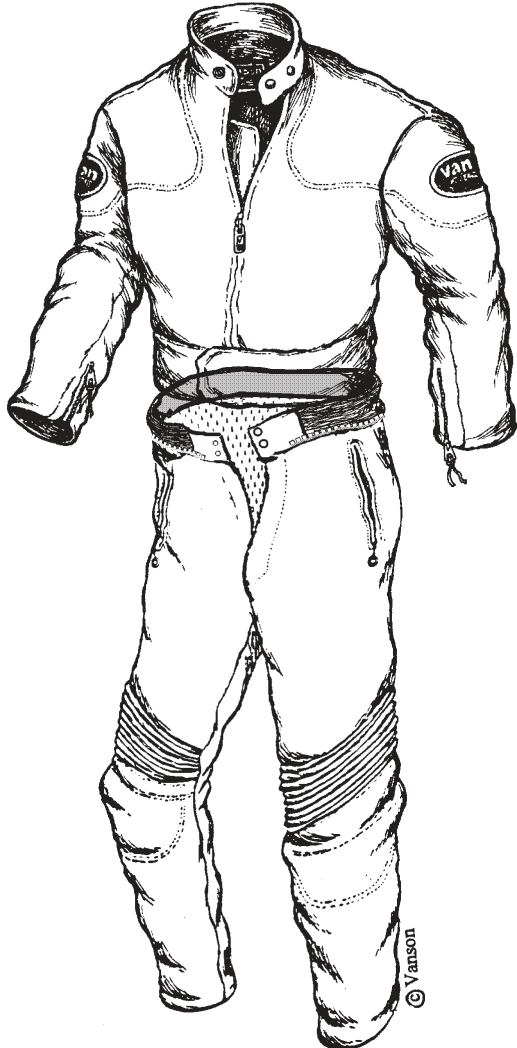
Vanson Use:
 Initials of sales person taking measurements Date

- 21) Knee
 Around center of knee straight.
- 22) Calf
 Around fullest part of calf, or over boot if worn under leathers.
- 23) Ankle
 Just above anklebone, or over boot if worn under leathers.
- 17) Outseam from Waist
 From waist (move tape slide buckle along elastic belt to point shown in fig. 3) down outside of leg to center of anklebone with tape against body.
- 18) Waist to Knee
 From waist (move tape slide buckle along elastic belt to point shown in fig. 3) down outside of leg to center of knee at side.
- 26) Inseam
 From crotch seam down inside of leg to anklebone (pull pants up snug before measuring).
- 27) Crotch to Mid-knee
 From crotch seam down inside of leg to center of knee, while standing with pants pulled up snug.
- 28) Knee to Ankle
 From center of knee to center of anklebone along inseam.
- 29) Waist to Crotch, Front
 From waist front (move **tape slide buckle** along elastic belt to point shown in fig. 4) to crotch seam with pants pulled up snug.
- 31) Front and Back Rise
 From waist back (move **tape slide buckle** along elastic belt to point shown in fig. 5) to waist front (where you have centered the elastic belt of the Vanson Measuring Device) between legs with pants pulled up snug.
- 32) Waist to Crotch, Back
 From waist back (move **tape slide buckle** along elastic belt to point shown in fig. 5) to crotch seam with pants pulled up snug.
- 35) Crotch Depth
 Sit on flat surface. From waist at side seam (move **tape slide buckle** along elastic belt to point shown in fig. 6) to the flat surface you are sitting on.
- 37) Knee Circumference, Bent
 Place tape around knee with leg straight. Bend knee, allow tape to get longer knee, take measurement. fig. 6.
- 38) Waist to Floor, Kneeling
 From waist at side seam (move **tape slide buckle** along elastic belt to point shown in fig. 7) to the floor along outseam while kneeling.

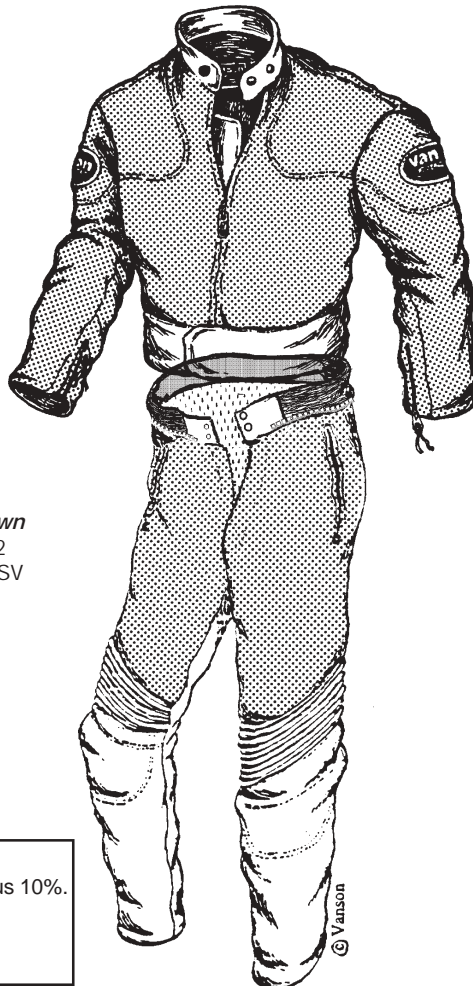


Track-Street Combo

After verification of measurements, we guarantee the fit!



Styles Shown
Top: CSR2
Bottom: PTSR



Styles Shown
Top: CSV2
Bottom: PTSV

Vanson has the answer for the high performance rider who wants the versatility and comfort of a street riding jacket and pant combo, but needs the additional protection of a two-piece suit with a full circumference waist zipper. Available only as a custom-fit "made to order" set, we can combine any of a number of different jacket styles from the sport, technical or super motard line of jackets, with the matching pant style by altering the waistband, adding a back expander and the full circumference zipper. The pants and jacket zip together for track days and riding schools, but the two garments can also be worn independently for street riding.

Both the jacket and pant can be fitted with any of the 3 styles of armor we offer including the patented F.A.S.Race Armor designed for the track. Degrees of ventilation can be achieved by choosing the sport rider jacket style with the appropriate vent front. Due to construction limitations, we are unable to make the Track-Street Combo with the adjustable waistbands on our Mark 2 Sport Rider family of jackets.

Vanson strongly recommends the use of purpose built racing suits for all forms of Motorcycle competition and **does not** recommend the Track-Street Combo for racing.

Suggested Mark 2 Sport Rider Jacket Styles:

- C3A2 Night Challenger
- CAV2 Challenger
- C3H2 Hurricane
- C3L2 Lightning
- C3S2 Sattelite
- COB2 Cobra
- COS2 Cobra Star
- CSR2 Sport Rider
- CSV2 Properf Sport Rider
- TE03 Mark 3 Technical
- SMJ Super Moto Jacket

Suggested Pant Styles:

- PTSR Sport Rider
- PTSV Properf Sport Rider
- 3PTS Night Rider
- 3PTV Properf Night Rider
- TEPS Technical Pants
- TEPV Properf Technical Pants
- 3TPS Night Technical Pants
- 3TPV Properf Night Technical
- SMP Super Moto Pants

Oversized Leather garments (men's only):
 Over sizes: from 48-54 in men jacket sizes plus 10%.
 Over sizes: from 56-62 + 10% + 100.00
 Over sizes: from 64 up + 10% + 250.00



Select Options Track-Street Combo

Select the options to be added to the basic garment as needed from those listed. Lettering and custom graphics will be specified in later pages.

If you need to specify the location of an option (pockets for example) draw the location on the diagrams on pages 3 & 6. These diagrams should be also used to sketch and specify the location of letters and numbers for your garment[s].

F.A.S. ARMOR attaches to inside of the suit with Velcro. It can be easily positioned or removed through an armor access port in the lining.		
PR2	GP elbow forearm armor	59.00 pr
PR3	GP knee shin armor	55.00 pr
PRO4	Articulated scale back pad	89.00
PRO5	Hip armor	30.00 pr
PROT	Back pad with strap.	109.00 ea
PR1J	GP shoulder armor - jacket	55.00pr

SOFT ARMOR		
SA1	Street armor - shoulder	30.00 pr
SA2	Street armor - elbow/forearm	30.00 pr
SA3	Street armor - knee/shin	30.00 pr
VA1V	VANTEC armor - shoulders	30.00 pr
VA2V	VANTEC armor - elbows	30.00 pr
VA3V	VANTEC armor - knees	30.00 pr
VA4V	VANTEC armor - back	50.00

CLOSED CELL PADDING (sewn inside backed with leather or mesh)		
1A	Elbows, oval shape	20.00 pr
1B	Knees, oval shape	20.00 pr
1C	Spine	35.00
1F	Elbow/forearm	20.00 pr
3	Hips	35.00 pr
1H	Chest	50.00
1I	Bicep	25.00 pr
1J	Shins	25.00 pr
1G	Seat	35.00
1S	Shoulders	25.00 pr

POWERSTRETCH tm PANELS reduces bulk in same manner as spandex, but offers additional abrasion resistance. (Select blue, red or black.)		
40VK	Velocity option (arm, leg & crotch)	105.00
39AK	Elbows, oval shape	35.00 pr
39BK	Knees, oval shape	35.00 pr
39DK	Knees, keyhole shape going to ankle	45.00 pr
39FK	Elbow/forearm, keyhole shape	45.00 pr
39HK	1" strip from wrist to armhole	45.00 pr
39IK	1" strip on inseam, crotch to mid-thigh	55.00 pr

EXTRA LEATHER (sewn inside suit)		
4	Seat	30.00
2	Hips	25.00 pr

KNEE DETAILS & SLIDERS		
44	Leather expansion sections above knees for ease of movement	40.00 pr
21	Leather patch over Velcro® for street use (matches suit graphics, includes Velcro®)	40.00
21A	Knee pucks including Velcro® on suit	80.00 pr
21B	Velcro patches only sewn to suit	40.00
21C	Replacement Pucks Only	40.00 pr
21D	Sidecar passenger seat or shoulder Velcro® patch with slider puck (show placement on diagram)	75.00

VENTS (street use only)		
19	Rear, at sides under arms, as exits	25.00 pr
19A	Zip front, show location on suit diagram	40.00 pr

WAIST DETAILS		
40A	Suspender buttons, 4 sets of 2 sewn to suit pants waistband	15.00
40S	Suspenders	35.00
40B	Delete waistband	100.00
	Change Velcro® to hidden snap closure	15.00

COLLARS

15A	Mandarin style with snap-back tab	20.00
22	Beaded or bound style (with tab)	20.00
22A	Velcro® tab across top of front zipper	20.00
33	Mandarin with velcro closure	20.00
22B	Nehru open neck	20.00

POCKETS (sketch location on page 3)

6A	Inside lining open, right chest	20.00 ea
6B	Inside lining open, left chest	20.00 ea
6D	Inside (applied patch)	25.00 ea
7	Outside pocket, zipper	20.00 ea
7A	Outside pocket, snap	20.00 ea
DPP	Delete Pant Pockets	N/C
7C	Outside pocket, open	20.00 ea

WRIST DETAILS

11	Velcro® closure tabs at end of zipper	15.00 pr
14C	Zipper at outseam (under the sleeve)	18.00 pr
40L	"D" Ring, Left wrist for kill switch cord	10.00 ea
40R	"D" Ring, Right wrist for kill switch cord	10.00 ea
RAWS	Raw Edge sleeve @ wrist	60.00

PERFORATIONS (for ventilation)

20A	Front on body under arms	20.00 pr
20F	Back on body under arms	20.00 pr
20D	Entire upper chest to waist	60.00
20E	Waist to crotch	35.00
46	Band across upper chest	35.00
46A	Biceps at front sleeve	20.00 pr
46B	Thighs, inseam between crotch & knee	20.00 pr
46C	Rear, at sides under arms, as exits	20.00 pr
46D	Rear, at side seams, shldr. to waist	35.00 pr

PROperf™ LEATHER PANELS

(more holes per inch than standard perfs)

46PJ	Shoulder to waist band	25.00
46PP	Waist to thigh seam	20.00
46P	Shoulder seam to thigh seam	35.00
20Q	Thigh seam to above knee expander	35.00
20R	Thigh seam to end of knee expander	35.00
46E	Perforated under sleeve (3rd) panel	35.00 pr
20T	Back of calf, knee to ankle	15.00 pr
20X	Pre-perfed knee to ankle front	20.00
20Z	Back expander	20.00

ANKLE DETAILS

13	8" zipper sewn on outseam	20.00 pr
13A	10" zipper (placed to fit)	20.00 pr

PATCHES

23	Velcro® sewn in square on back for #24. Size - approx. 12" wide X 12" high	20.00
24	Square of leather with strips of velcro to mate up with option #23. Size approx. 12" wide X 12" high. Specify color. Price does not include letters/numbers.	25.00
26	Sewing on sponsor patches (provided by customer) covered in clear plastic	8.00 ea
Total cost of patches @ \$8.00 ea.		
26A	Additional Vanson competition ovals, specify location and number	N/C
26B	Sewing on patches w/out plastic covers	8.00 ea
26T	Reflective ovals	N/C
DVOJ	Delete Vanson Ovals	N/C
EMBO	Embroidered Leather ovals	20.00

SPECIAL OPTIONS* not listed above.

OPTIONS TOTAL \$

* If you want an option that is not shown, sketch and describe in detail your requirements. We will advise you of cost and practicality.

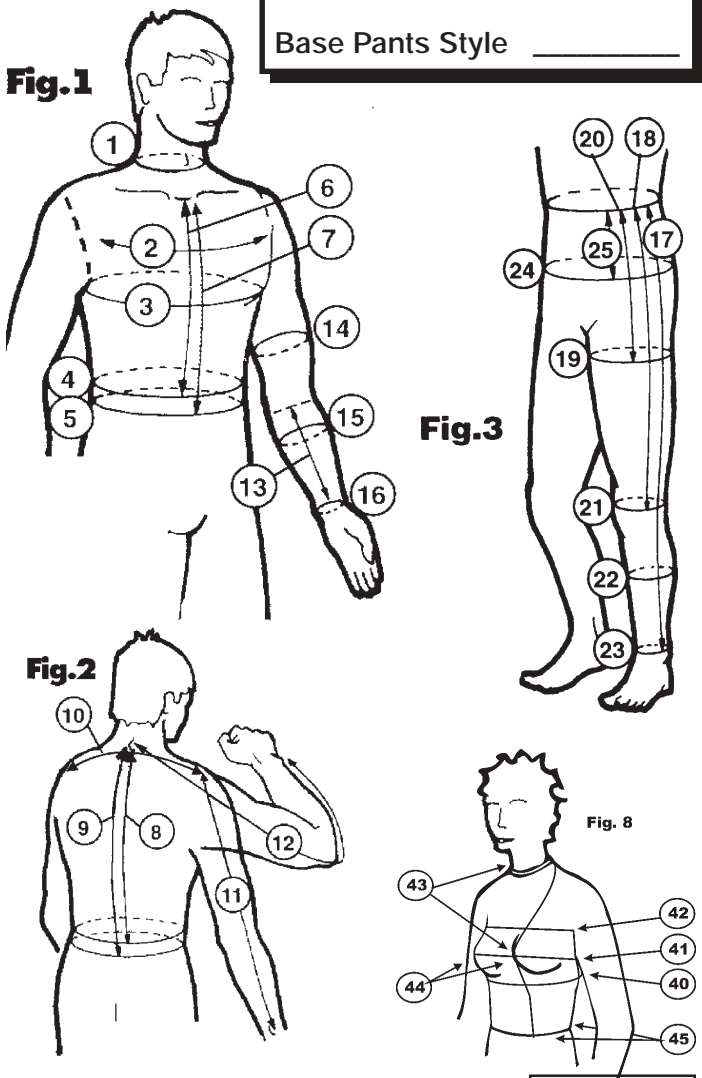
Custom Measurements

Track-Street Combo - page 1

Before starting measurements read page 14 for suggestions. Also, you **MUST** perform all related Measurement Checks before we will accept a custom order (see page 15)

Base Jacket Style _____
 Base Pants Style _____

- 1) Neck
 Around neck, just below Adam's Apple.
- 2) Upper Chest
 Across front only, from arm/chest crease to arm/chest crease (or where arm contacts chest), about 3" below base of neck.
- 3) Chest
 Around fullest part with the tape high up under arms with arms at sides (for women, around fullest part of bust).
- X 4) Waist
 At navel, where you have the elastic belt of the Vanson Measuring Device, make sure your tape is parallel to the floor.
- 5) Beltline
 Around body at top of pants waistband, but not over the belt.
- X 6) Waist to Neck, Front
 From the waist at navel (move *tape slide buckle* along elastic belt to point shown in fig. 1) to the top of the rib cage.
- 7) Neck to Beltline, Front
 From top of the rib cage to top of pants (waistband).
- X 8) Waist to Neck Back
 From the waist (move *tape slide buckle* along elastic belt to point shown in fig. 2) to base of neck (where the vertebrae protrudes from the spine).
- 9) Neck to Beltline Back
 From the base of neck (where the vertebrae protrudes from the spine) to the top of pants (waistband).
- 10) Across Shoulders
 Straight across from shoulder bone to shoulder bone.
- 11) Sleeve Length
 From one shoulder bone (same as #10) to center of wrist bone with arm by side
- 12) Nape of Neck to Wrist
 Place fist in front of chest keeping arm parallel to floor. Take measurement from base of neck (where the vertebrae protrudes from the spine) around bent elbow to wrist bone.
- 13) Wrist to Inner Elbow
 Bend arm, find crease, measure from crease line to center of wrist bone with arm straight down.
- 14) Bicep
 With muscle flexed around widest part.
- 15) Forearm
 With muscle flexed around widest part, about 2" down from elbow crease.
- 16) Wrist
 Around wrist bone at center of wrist.



- X 17) Outseam from Waist
 From waist (move *tape slide buckle* along elastic belt to point shown in fig. 3) down outside of leg to center of anklebone with tape against body.
- X 18) Waist to Knee
 From waist (move *tape slide buckle* along elastic belt to point shown in fig. 3) down outside of leg to center of knee at side.
- 19) Thigh
 Around thigh about 2" below crotch with tape parallel to floor.
- X 20) Waist to Thigh
 From waist (move *tape slide buckle* along elastic belt to point shown in fig. 3) down leg to where you have just taken thigh measurement (#19).
- 21) Knee
 Around center of knee with leg straight.
- 22) Calf
 Around fullest part of calf, or over boot if worn under leathers.

Custom Measurements

Track-Street Combo - page 2

Name _____ Male Female

Height _____ Weight _____ Age _____

Vanson Use:
 Initials of sales person taking measurements
 Date

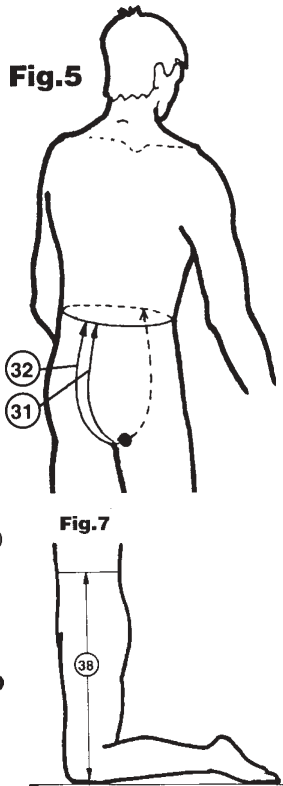
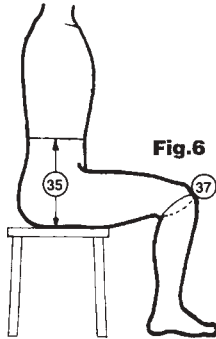
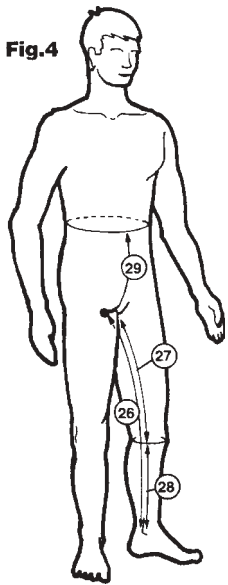


Fig. 7

Fig. 7

23) Ankle
 Just above anklebone, or over boot if worn under leathers.

24) Hips
 Around fullest part, parallel to floor, about 7" below waist line.

X 25) Waist to Hips
 From waist (move *tape slide buckle* along elastic belt to point shown in fig. 3) down outseam to point where #24 was taken.

26) Inseam
 From crotch seam down inside of leg to anklebone (pull pants up snug before measuring).

27) Crotch to Mid-knee
 From crotch seam down inside of leg to center of knee while standing with pants pulled up snug.

28) Knee to Ankle
 From center of knee to center of anklebone along inseam.

X 29) Waist to Crotch, Front
 From waist front (move *tape slide buckle* along elastic belt to point shown in fig. 4) to crotch seam with pants pulled up snug.

30) Crotch to Neck, Front
 From crotch seam to neck hollow with pants pulled up snug.

X 31) Front and Back Rise
 From waist back (move *tape slide buckle* along elastic belt to point shown in fig. 5) to waist front (where you have centered the elastic belt of the Vanson Measuring Device), between legs with pants pulled up snug.

X 32) Waist to Crotch, Back
 From waist back (move *tape slide buckle* along elastic belt to point shown in fig. 5) to crotch seam with pants pulled up snug.

33) Crotch to Neck, Back
 From crotch seam to base of neck (where vertebrae protrudes from spine). Take this measurement with pants pulled up snug and hold tape against body.

X 34) Waist to neck, Front Seated
 From waist front (move *tape slide buckle* along elastic belt to point shown in fig. 1 for #6) to hollow at base of neck.

X 35) Crotch Depth
 Sit on flat surface. From waist at side seam (move *tape slide buckle* along elastic belt to point shown in fig. 6) to the flat surface you are sitting on.

36) Neck to Beltline, Bent Over
 From beltline at back (top of pants) to base of neck (where vertebrae protrudes from spine) in the riding position.

37) Knee Circumference, Bent
 Place tape around knee with leg straight. Bend knee, allow tape to get longer knee, take measurement (fig. 6).

X 38) Waist to Floor, Kneeling
 From waist at side seam (move *tape slide buckle* along elastic belt to point shown in fig. 7) to the floor along outseam while kneeling.

39) Total Torso
 From base of neck, front through legs with pants pulled up snug to base of neck at back. This should equal measurement #39: [#30 + #33 = #39]

... Women only Fig.8

40) Circumference
 Measure just underneath bust.

41) Circumference
 Measure around widest portion of the bust ...

42) Circumference
 Measure just above bust

43) Back of neck to widest part of bust
 Bone at base of back of neck around to apex of bust

44) Apex to Apex
 Measure across the bust from apex to apex ...

45) Waist Front to Waist Back
 Measure from front waist (the elastic belt) directly over the apex to the shoulder point and back down to the elastic belt in back.

Letters & Numbers [Types and Sizes]

Choose: Type & Style. Fill out the correct section below. Mark on diagram the location and direction the word[s] are to be read. Sizes shown are used as a guide only. Letters are sized to fit the design and pattern based on your specifications.

Types of letters & numbers

The letters in the boxes after the examples are to identify the TYPE

PLAIN	P	2"	\$5 ea	3"	\$6 ea	8"	\$8 ea
OUTLINE	O	2"	\$8 ea	3"	\$10ea	8"	\$14ea
SHADOW	SH	2"	\$8 ea	3"	\$10ea	8"	\$14ea
SLOPING	S	2"	\$5 ea	3"	\$6 ea	8"	\$8 ea
<i>SLOPING OUTLINE</i>	SO	2"	\$8 ea	3"	\$10ea	8"	\$14ea
<i>SLOPING SHADOW</i>	SS	2"	\$8 ea	3"	\$10ea	8"	\$14ea

Note: If you are ordering OUTLINE, SHADOW, SLOPING OUTLINE, or SLOPING SHADOW write the primary [or main] color FIRST followed by the color of the outline or shadow.

Note: Embroidery is available. Please call for quote. Foil laminated and Solar leather 15% extra.

Styles of Letters & Numbers

BANCO	CANCUN	FUNHOUSE	<i>Brush Script</i>
<i>BALLOON</i>	CHOPHOUSE	FUTURA	SERPENTINE
BEACH HOUSE	COOPER	GINKO	SQUARE
BLOCK	COSMIC	OLDTOWN	<i>STACCATO</i>
BREMEN	EXPO	<i>PHOTOGRAPH*</i>	TIMES ROMAN
		REVUE	TIMES SCRIPT
			TRANSROBOT

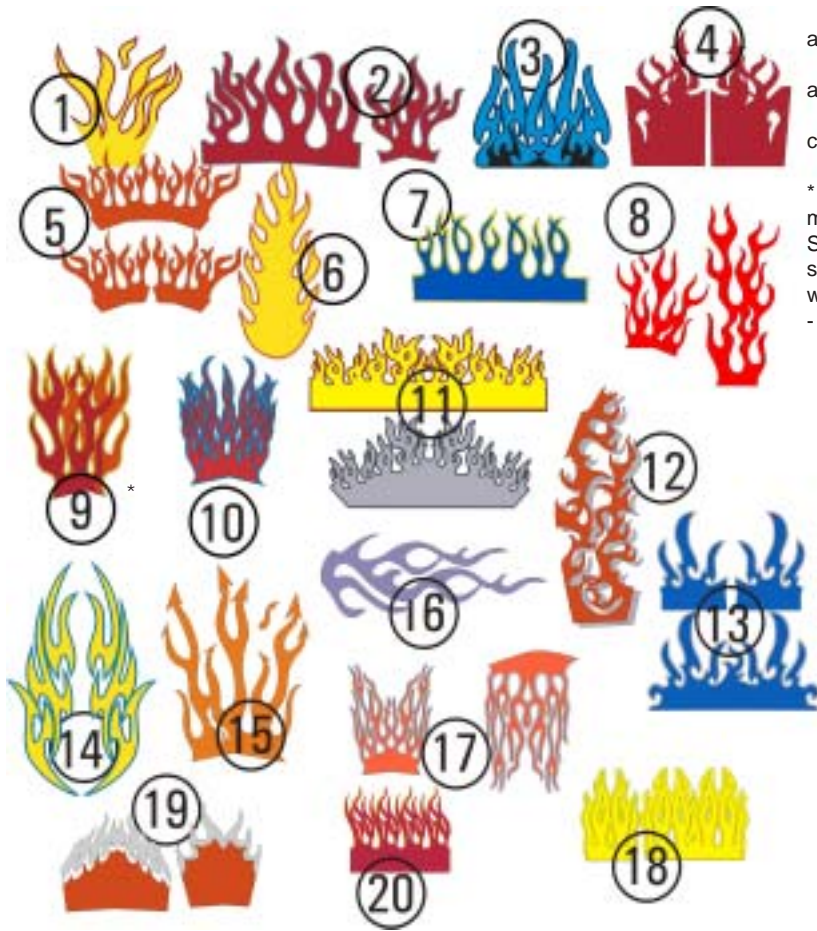
N:\MISC\DATA\IVANSON\Vanson_Current_forms_062503UKT_PNT2007.pmd

**available only in capitals. Additional fonts are available. Send sample and we will match as close as possible.*

TYPE	SIZE	STYLE	WORDING	COLOR(S)	LOCATION	Total no. of letters	TOTAL \$

Numbers and letters TOTAL \$

Design Embellishments



Flame Pricing:

-\$75 for first color per one arm or one leg
 -\$150 for full circumference at the body
 -add \$35 to include an outline color to any.

* Flame Style #9 is a 2 color minimum *without* the outline. Should you choose this flame style with an outline the cost would be [\$75 - per arm or \$150 - full circumference] + \$35 +\$35

Pricing on bones: each "Zone" is \$200 *example:* add bones to the front of a jacket AND to the front of a pair of pants - \$200 [jacket] +\$200 [pants] = \$400



Bone "Zones"

Bone "Zones"	
[please check]	
<input type="checkbox"/>	Jacket - front
<input type="checkbox"/>	Jacket - back
<input type="checkbox"/>	Pants - front
<input type="checkbox"/>	Pants - back

FLAMEPLACEMENTS & COLORS Choose the Flame Number them Placement [arms, legs, full circumference] and Colors

FLAME #	LOCATION	COLOR(S)	TOTAL \$
Flame TOTAL \$			

LOGOS & TRADEMARKS <small>Send clear & precise artwork. We will advise you of cost.</small>			COLOR(S)	LOCATION	TOTAL \$
	Logo				
	Logo				
	Logo				
Logos TOTAL \$					

vanson in logo style letters can be added in two areas for free to enhance the look of your leathers. <small>Show locations here and in section 3 or 4. Additional Vanson logos cost \$15.00 ea.</small>						
			COLOR(S)	LOCATION	Total no. of logos	TOTAL \$
1 1/4"	Logo	vanson				
2"	Logo	vanson				
	Logo	vanson				
	Logo	vanson				



For detailed visual instructions, please check out our web site at:
www.vansonleathers.com and Click on custom garments to go to the
presentation at :www.vansonleathers.com/measure1/contents.htm

Some suggestions on taking good measurements and using our Measurement Check Sheet

1. Wear a pair of *tight fitting jeans* (with empty pockets) and a t-shirt.
(Please note on form if measurements are taken over different style clothing ie: shorts or sweat pants).
2. Stand up straight. Look straight ahead, do not look at the person measuring you.
3. Position the elastic belt at the natural waistline (over the navel).
Be sure the elastic belt is parallel to the floor and that it does not move during the process.

On the next page, you will find a measurement check sheet. This is not a guarantee that you will not need to re-do any measurements but helps to eliminate and/or identify incorrect measurements. Take the time to calculate your measurements and compare them. You are allowed 1" difference plus or minus on your nape of neck to wrist measurement and half an inch on all others. Please remember that you cannot measure yourself. It is a two person operation!

A few helpful hints for the measurer:

When measuring the total torso (#39), you go from the hollow in the neck, through the legs and up to the vertebrae that protrudes from the base of the neck. (On some people it is hard to find. Have them look down and it will be easier to locate that vertebrae. After locating the vertebrae, have them straighten up and look forward before you take the measurement.)

When measuring the rise (#31), you go from the navel through the legs and to the same point as navel on your back.

When measuring the inseam, follow the seam on their snug jeans. If their jeans are baggy (which is not recommended) have them hold the corners of their pockets and lift until the jeans are snug in the crotch area. To find the center of the knee, have them bend their leg and follow crease to center. (Do not let them move at all as all the measurements are critical and inter-related.)

When measuring across the shoulders, a good reference (if the shoulder bones are not apparent) is to follow the underarm crease up to the top of the shoulders. You are looking for the upper seam of your arm socket. When you are doing your sleeve length and nape of neck to wrist be sure and use the same reference points.

The hip (#24) measurement is the fullest measurement around their rear.

To obtain an accurate bent knee circumference (#37), first place tape loosely around knee then make them get into the riding position.

It is best to get on the bike or to simulate a bike by sitting on a chair and getting in the riding position.

Measurement Check Sheet

FRONT

#6

TOTAL TORSO
MEASUREMENT
TAKEN

+

#8

BACK
TORSO

#29

+

#32

#30

MEASUREMENT
TAKEN

+

↓

TOTAL

#33

#27

+

TOTAL

TOTAL
TORSO
CALCULATED
TOTAL OF #30
& #33

MEASUREMENT
TAKEN

#28

+

#26

MEASUREMENT
TAKEN

#17

#29

+

TOTAL

MEASUREMENT
TAKEN

#10

#32

+

#31

TOTAL

MEASUREMENT
TAKEN

TOTAL

MEASUREMENT
TAKEN

1.50

+

MEASUREMENT
TAKEN

#11

#12

MEASUREMENT
TAKEN

MEASUREMENT
TAKEN

TOTAL

TOTAL

TOTAL

Total Torso Check #2
Add #6 to #8 and #31 and it
should be within 1/2" of #39

Note: To insure accuracy, all measurement checks should come to within 1/2" of the measurement taken. The Nape of Neck to Wrist measurement must be within 1" of measurement taken.

INSEAM

OUTSEAM

TOTAL
RISE

NAPE
OF
NECK
TO
WRIST

Follow instructions carefully, use the Vanson Measuring Device where marked X. Always have someone else measure you

Take Your Measurements

GENERAL INSTRUCTIONS:

- Never measure yourself. Get someone else to help you.
- For taking measurements, wear lightweight shirt and pants (T-shirt and jeans preferred) that fit you comfortably. Empty contents of pockets. Pull up pants for snug fit. Remove belt.
- On measurements marked with X, use Vanson Measuring Device (see below). Another tape will also be required for measuring.
- Pull tape measure snug. DO NOT allow extra in your measurements.
- Vanson roadrace suits are purpose designed for comfort and ease of movement in the roadrace position. They are designed to be worn over minimum clothing. They may not feel comfortable while standing or walking. They are not designed for touring or pedestrian use.

HOW TO USE THE VANSON MEASURING DEVICE

- This device is designed to assist you in obtaining consistent measurements. This is of utmost importance in order for us to make your suit fit as it should. Use on measurements marked X.
- Secure the elastic belt part of the device around waist at navel. Make sure belt is parallel to ground.
- The elastic should be a snug fit so it does not move up and down easily when you rotate the tape or slide the tape slider buckle.
- You can now snap the tape to the tape slider buckle.
- Have someone run the tape over your body to the point you need to measure to, and read off then write down the measurement.
- Rotate tape for other measurements that are from the same point. For other measurements from points, slide tape slider buckle.
- Measure from points, slide while maintaining same height.

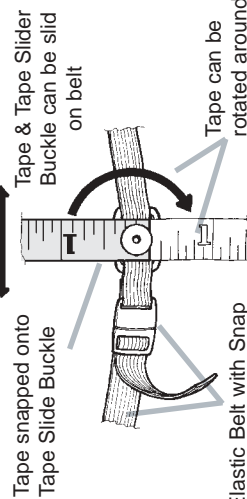
Tape pulled over body to neck front. Measurement can be read off.

Tape can be rotated for other measurements from same point

Elastic belt snug at natural waistline (centered over navel) and parallel to ground.

Vanson Measuring Device in use.

Example shows measuring neck front ⑥ to natural waistline (navel). Other measurement example shown is ③1



If you have any questions, call Vanson's help line (508) 678-2000

Vanson Measuring Device



Custom Garments

U.S. Made . . . experience the best!

951 Broadway, Fall River, MA 02724

Phone (508) 678-2000 • Fax (508) 677-6773

E-Mail: vanson@vansonleathers.com • Web Site: www.vansonleathers.com

Measurements taken by _____ Date and location _____

Complete Order Form

After verification of measurements, we guarantee the fit at no extra charge!

PANT OR JACKET STYLE #	PANT OR JACKET COLOR(S)

Vanson use only	
P. O. #	P. O. #

Type or print clearly. Fill out all the relevant sections. Be sure to read this form carefully, including the terms and conditions section.

All orders must be signed and accompanied by a 50% deposit. DUE DATE MAY CHANGE WITHOUT NOTIFICATION.

Prices subject to change without notice before receipt of order.

Salemsans #	Pick Up or Ship
Dealer #	

Order Date

Office Use
Date Order Received

Due Date

Dealer Name _____

Customer's Name (if different from above) _____

Shipping Address _____

City _____ State _____ Zip _____

Dealer Phone (____) _____ Customer W. Phone (____) _____

Email _____ Customer H. Phone (____) _____

Birth Date ___/___/___ (used for Cust #) Date Needed ___/___/___

Method of Payment: VISA MasterCard AMEX Discover

Money Order Check Check number

AMEX, Discover, VISA or MasterCard # _____

Exp. Date _____

Authorizing Signature _____

NOTE: If you change your order after we have received it, your changes may affect our scheduling. Changes made after certain production steps may also incur additional charges.

CALCULATE COST		For Vanson Use
Add the totals from each section of this form		
1 Basic Jacket or Pant	\$	
Custom Fee	\$	
2 Options	\$	
3 Graphic Design	\$	
4 Stripes Etc.	\$	
5 Letters & Numbers	\$	
Total	\$	
Rush Charge (+20%)	\$	
MA res.add sales tax	\$	
Credit on file. <input type="checkbox"/> TOTAL	\$	
Deposit 50%	\$	
	\$	
Shipping	\$	
BALANCE DUE		

TERMS AND CONDITIONS

All custom orders must be signed and be accompanied by a 50% deposit. This deposit is non-refundable once work has commenced on your order. A rush service is available for a 20% surcharge on the total price of the garment. This is intended to cover costs related to producing your garment within 15 working days. However, this is not a guaranteed service and is dependant on our existing backlog when your order is received. In the event we are unable to produce your suit within the specified time, the rush charge will be refunded. Accurate measurements are your responsibility.

Alterations due to inaccurate measurements are chargeable to _____

you. If the balance on the garment is not pre-paid, the garment will ship C.O.D. (cash or certified check) for the balance.

Custom orders are not refundable. If any changes or alterations are required to the garment, it must be returned within 30 days from the date shipped.

All designs submitted or made as a result of this order become the exclusive property of Vanson Leathers Inc. and may not be used for any purpose without the written permission of Vanson Leathers, Inc.

Vanson Leathers, Inc. reserves the right to change and modify product specifications.

Note: Florescent and metallic finishes on leather are decorative and are not warrantied by Vanson. All metallic and florescent finishes are light sensitive and may fade in sunlight. All non drum dyed leather, including metallic and florescent finishes, cannot be refinished by Vanson.