

After verification of measurements, we guarantee the fit!



Thank you for choosing Vanson Leathers!

Custom Garage Suit Guide

Quality...from Professionals...for Professionals!

Vanson Leathers understands professional racers. They depend on premium quality protective garments, fast knowledgeable service and styles and graphics to showcase the racer and his or her sponsors.

Vanson Custom Suits are made from top-grain U.S. cowhide approximately **3 1/2 oz.** per square foot and **1.4 -1.7 mm.** We are constantly developing new features and experimenting with new materials. This ensures that we can offer the best product and service to professional riders. Vanson offers a complete "menu" of options and lettering styles to choose from, allowing you to design the suit you want.



How to use this form

Select the **Style** of suit based on the standard features which meet your racing needs. For each Style, there is a list of available **Options**. These Options are available at an additional cost to the base price of the suit. Select the **Style** then the **Options**. Next, you can **Draw Your Own Design** or choose from the many standard **Graphic** designs we have provided for you. Color selections can be made from Vanson's wide selection of drum-dyed colors.

Sample leather color swatches are available upon request. Remember, you can change colors at any seam line for **no extra charge!** To add a personalized touch to your custom suit use the **Lettering and Logos** section.

Note: Foils and Special Effects leather cost 15% more. Be sure to show the placement of any custom lettering in the spaces provided. Then, using the special **Vanson Measuring Device**, complete the **Take Your Measurements** section. Be sure to follow the directions carefully and fill out all the measurements in this section. In order to verify your measurements, it is **required** that you include your **Height, Weight, and Age**.

Finally, turn to page **41** of the form and complete your order by filling out the **Shipping Information** and adding the cost from each section to determine the **Total Cost** of your suit.

The Proof is in the Patents

Buying a Vanson suit is purchasing a unique piece of leather working history. Over the years, as we have developed our own, unique way of producing a better quality garment we've come up with entirely new concepts for our riders. As these innovations have been discovered and perfected, they have been patented.

Currently **Vanson holds over 10 unique patents.** These cover everything from the way we set the zippers in our garments for our venting system to our Floating Armor System. Carefully designed for your comfort and safety when working with our superior materials, we always seek to innovate without sacrificing the longevity of our suits.



951 Broadway Fall River,
MA, 02724



www.vansonleathers.com
+1 508 - 678 - 2000

Vanson Suit Tree:

(#) Designates 2 piece suits - all with full circumference waist zipper
 *Ready made Suits not available as a custom order. Call for more information.

	Custom	Off-the-Rack
MK3 suits (with armor) <i>Professional Road Racing, side car</i>	VO93 double front zipper suit VE93 VL93 V932 (#) ladies available	V09 (sizes 34-54)
Drag Race <i>Drag Racing, Dirt Track, Snowmobile Racing</i>	DR1 ladies available DR2 (#) DRL2 (2#)	Drag (#) * (sizes 34-54)
Super Motard (with armor) <i>Super Motard Racing, Dirt Tracking, Vintage Road Racing</i>	SM02 ladies available SM22 (#) ladies available	1 piece only (sizes 34-54)
Traditional (extra leather) <i>Vintage Road Racing, Long Boarding, Dirt Tracking</i>	RR1 ladies available RR2 ladies available	
MK2 suits with armor <i>Road Racing, Dirt Tracking, Long Boarding, Side car Racing</i>	RR12 ladies available RR22(#) ladies available	
Street & Track <i>Track Days, Sport Riding</i>	STRC (#) ladies available	
HYBRID - suit with Hump and CE F.A.S. armor <i>Professional Road Racing, Road Racing, Vintage Road Racing</i>	Not Available in Custom	HYB1 * (sizes 34 54)
Garage Suit <i>General Wrenching, Everyday Riding</i>	VNV6 ladies Available	VNV6 (sizes 34 54)
Car Suit <i>Professional Car Racing, Kart Racing</i>	FD01, FD05 - Double-Zip FS01, FS05 - Single-Zip FP01, FP05 - Pants FJ01, FJ05 - Jacket	(sizes 34 54)

TOP 11 REASONS TO BUY A VANSON

#1 Pride of ownership

When you get a handmade Vanson custom suit you are joining a very exclusive worldwide club. These suits are heirloom quality, and given basic proper care will give decades of service.

#2 Express yourself through the creation of a beautiful and unique suit

Any graphic - you (we can help you) design it, we will make it. Or look at our design pages for inspiration. Note: subject to design/construction limitations of the basic garment we are making for you.

#3 Value

Get Back Up and Get Going – our suits are NOT crash and replace. Mike Martire has over 60 crashes on his suit; Brian “Crash” Kent over 40. Korry Hogan came off at 248 mph. Just before the finish line and slid 600 feet. Chris Hand got blown off his drag bike at 228 mph. Dale Quarterly lost it at full speed on the Daytona High Banks when his Ducati transmission locked up – 165 mph creating a 400 foot slide. Eric Wood at Homestead came off at 160 mph, and ran back to the pits to relaunch on his back-up bike.

#4 Strength + Protection

Race after race, year after year. Some of our oldest suits are still racing. Made from the strongest leathers, and the innovative and unique patented design features – such as the F.A.S. (Floating Armor System), Double Front Zipper racing suits, Powerstretch Aramid textile panels, RAM Air Sleeve vents, Air Curtain ventilation systems – Vanson continuously works to produce the best at the front of the pack. Take a look at Eric Guilbranson’s Crash101 video (on web homepage) on why and how the Vanson suits protect.

#5 Made in USA

Handmade with pride in our workshop in Fall River, Mass, USA. The Vanson team has over 44 years experience of making dreams come true. We make and finish our own leather. We make our own Aramid textile – which we call Powerstretch.

#6 Ownership registry

All repairs, patterns and alterations are archived to enable us to repair and or reproduce each individual garment. We have tracked lost and stolen Vansons for their owners and the police.

#7 Reconditioning service

We will clean and bathe Vanson leathers using the same ph balanced oils and waxes used in the original tanning and finishing of the leathers.

#8 Aftercare

We will alter, repair and maintain Vanson leathers whatever the age and condition so long as the finished product is deemed “safe” by us.

#9 Guaranteed fit

Once measurements have been approved by us, we have the information we need to be able to guarantee the fit for a custom motorcycle jacket, pants or suit. No worries – see our measurement video and pages – or call us, we can help.

#10 Any size

We will make to fit

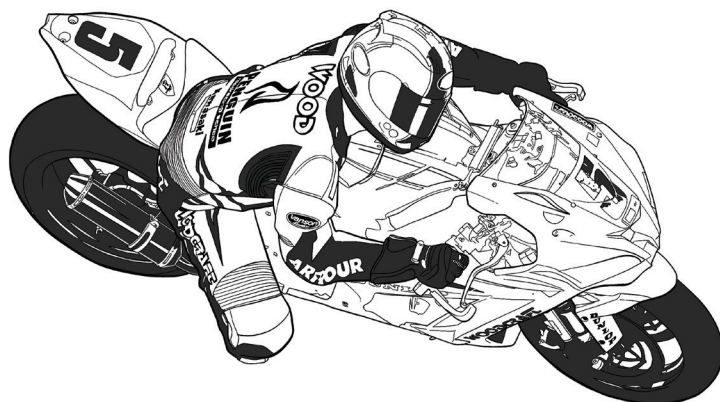
#11 Asphalt Insurance

Take a spill and you’ve got asphalt insurance you’re covered!
Who else does that for their customer?

TESTIMONIALS

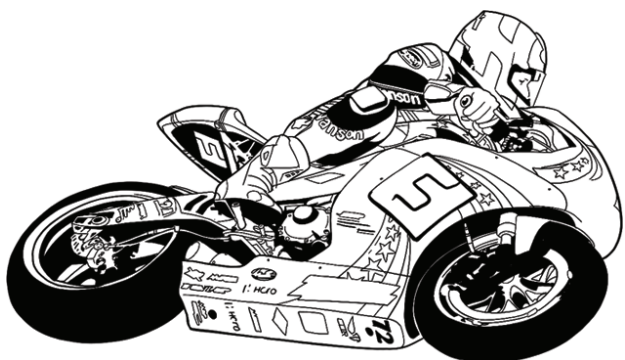
Eric Wood

"Vanson leathers are without question the finest racing suits available. Their premium leather and uncompromising manufacturing processes result in a product that you can really trust. After nearly 30 years of riding and racing in Vanson suits my skin has never touched the asphalt. There is no other brand that will protect you, time after time, like a Vanson."



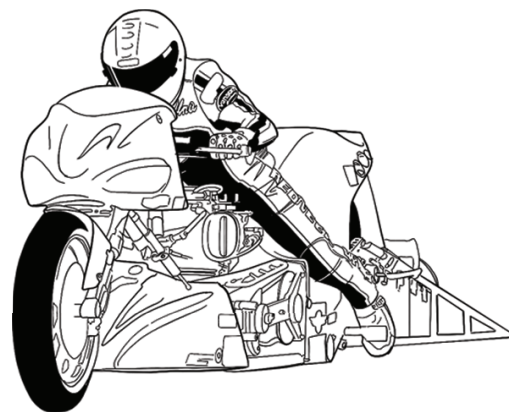
Pat Mooney

"I've worn several different manufactures' suits over my racing career and have unfortunately crashed in all of them. Vanson suits have held up crash after crash. If you plan on pushing to the limit on the racetrack the inevitable is going to happen, the best thing you can do for yourself is make sure you're wearing the best protection available."



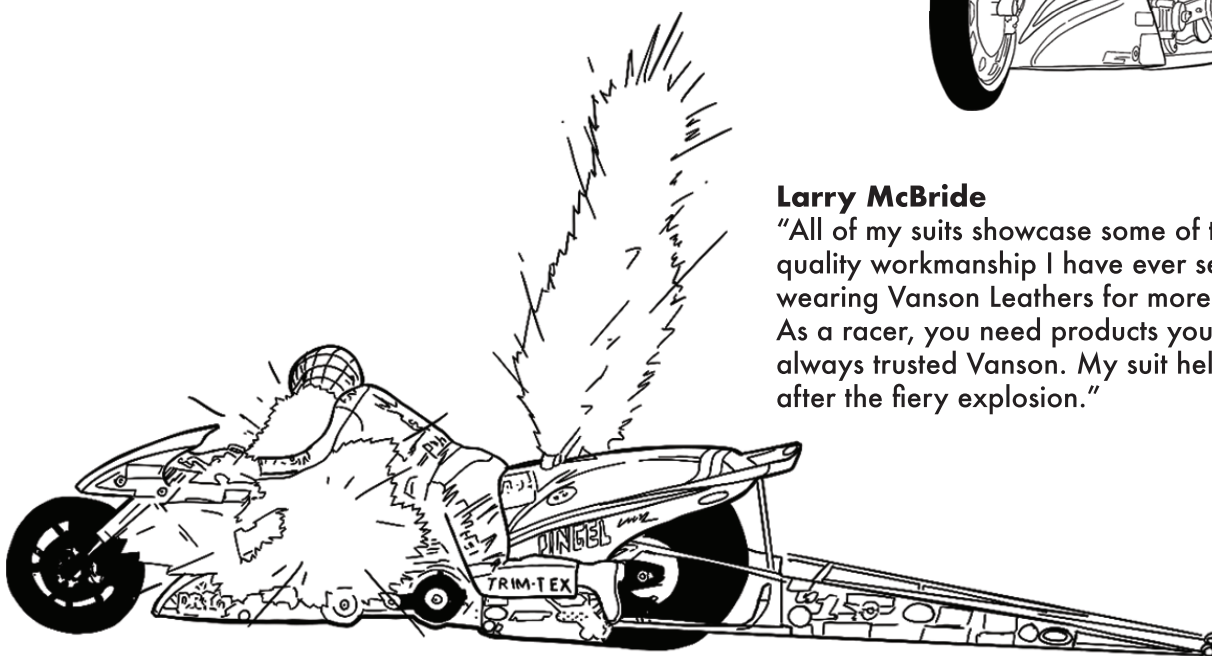
Chris Hand

"I have been wearing Vanson Leathers exclusively for almost 20 years. I have also experienced unparalleled service and support from Vanson over the years. Vanson is my only choice in leather apparel, whether I'm racing the 240 mph Top Fuel bike, street riding, or just sporting my Vanson Hailwood jacket at bike events."



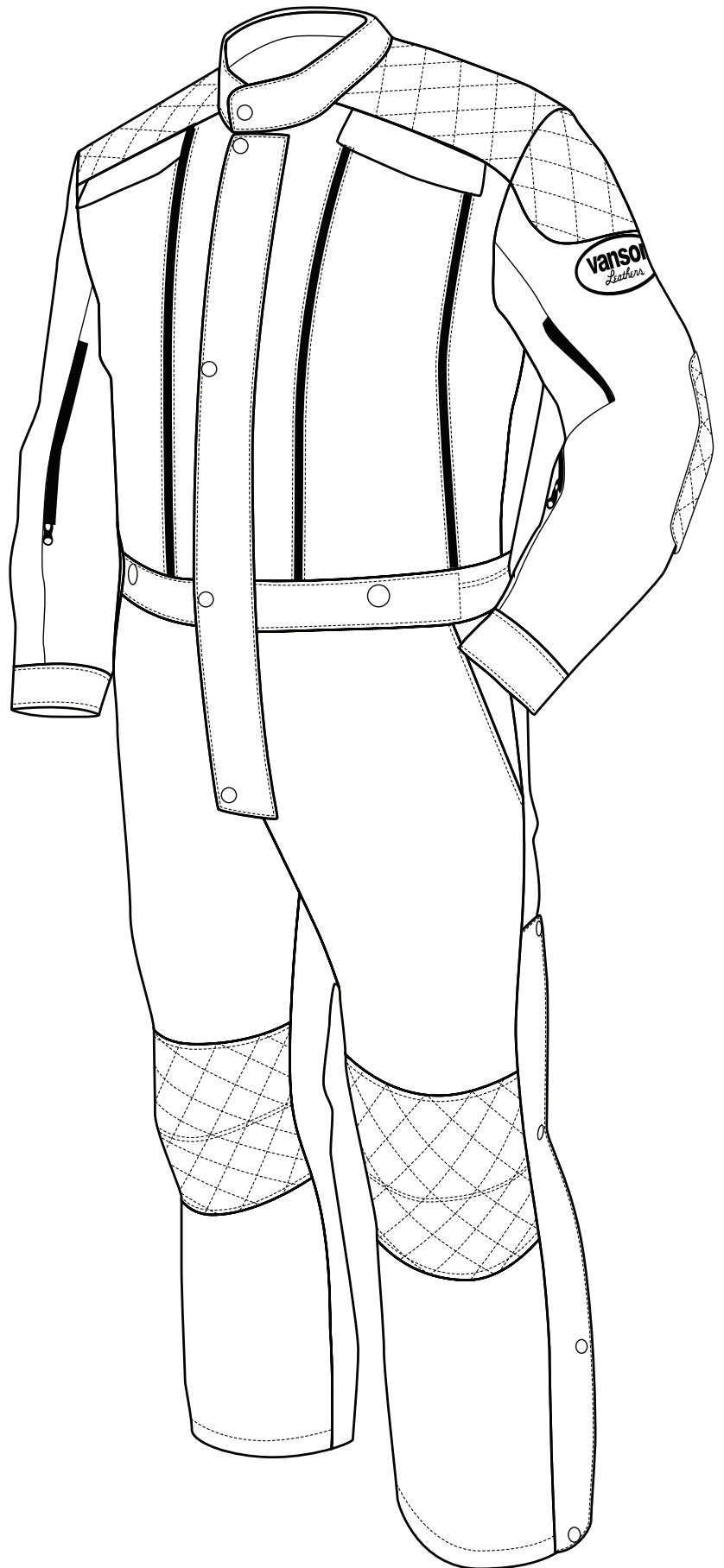
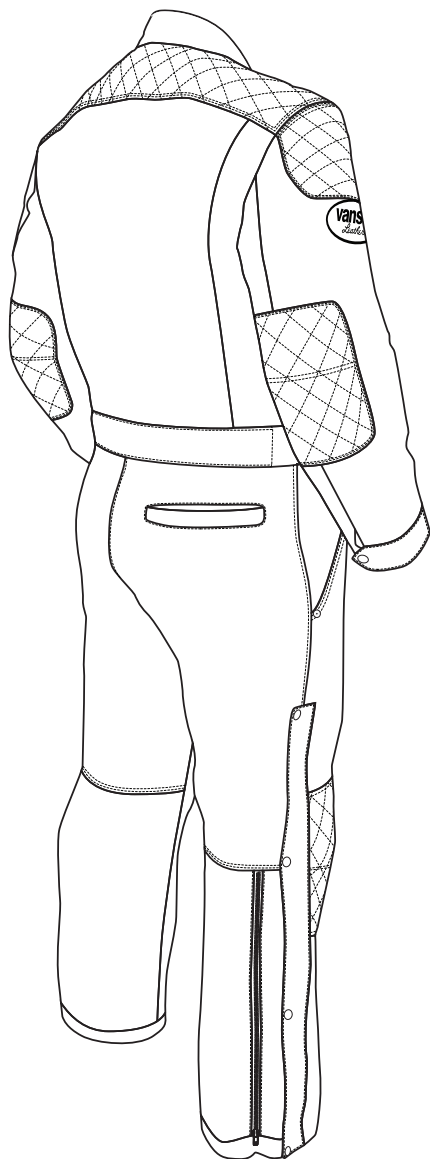
Larry McBride

"All of my suits showcase some of the highest quality workmanship I have ever seen. I have been wearing Vanson Leathers for more than 20 years. As a racer, you need products you can trust. I have always trusted Vanson. My suit held up great, even after the fiery explosion."



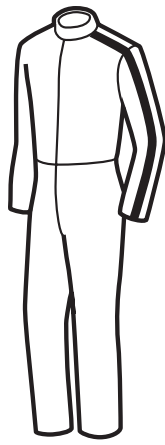
Garage Suit VNV6

We have found the happy medium of form and function. Our garage suit combines the classic utility of garage coveralls with the adaptable aspects such as velcro areas for armor, avenger vents on the front of the torso, air ram vents on the sleeves, along with the long lasting durability of our waxed cotton. This is perfect for putting a few miles on after tuning your carbs or layering up and riding cross country.

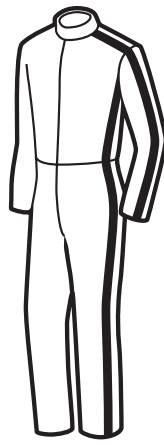


#	Description of option	Price \$
G.P. ARMOR OPTIONS		
PRO4	Articulated scale back pad - F.A.S. attachment to lining	89.00 EACH
PRO5	Hip armor	30.00 PAIR
PROT	Strap-on back pad - {3,4,5,6,7 scale sizes available}	109.00 EACH
CE ARMOR OPTIONS		
VA1V	VANTECH F.A.S. CE armor shoulders	30.00 PAIR
VA2V	VANTECH F.A.S. CE armor elbows	30.00 PAIR
VA3V	VANTECH F.A.S. CE armor knees	30.00 PAIR
VA4V	VANTECH back pad - attaches with velcro inside lining	40.00 EACH
OUTSIDE APPLIED PATCHES - APPLIED TO OUTER SHELL		
32	Inside leg heat-shield sewn onto the outside of the garment	20.00 EACH
34	Applied shoulder patches sewn onto the outside	25.00 PAIR
34P	Thin padding under the applied outside shoulder patches	10.00 PAIR
35	Applied outside hip patches	25.00 PAIR
35P	Thin padding under applied outside hip patches	10.00 PAIR
36P	Thin padding under shoulder yoke diamond top stitching	15.00 EACH
37	Applied outside elbow patches	15.00 PAIR
37P	Thin padding under applied elbow patches	7.50 PAIR
38	Applied outside knee patches	15.00 PAIR
38P	Thin padding under applied outside knee patches	12.00 PAIR
CLASSIC DECORATIVE DIAMOND TOP STITCHING		
34Q	Diamond top-stitching on applied shoulder patch or shoulder	25.00 PAIR
35Q	Diamond top-stitching on applied hip patch or hip area	25.00 PAIR
36Q	Diamond top-stitching across shoulder yoke - front or back This classic decorative top stitch follows stitch lines drawn onto the yoke or yoke area	25.00 EACH
37Q	Diamond top-stitching on elbow patch or elbow area	25.00 PAIR
38Q	Diamond top-stitching on knee patch or knee area	25.00 PAIR
INSIDE CLOSED CELL PADDING		
1A	Elbow Padding - inside Oval football shape	N/A w/armor 20.00 PAIR
1B	Knee Padding - inside Oval shape	N/A w/armor 20.00 PAIR
1C	Spine Padding - inside - approx. 6" wide	N/A w/armor 35.00
1F	Elbow-Forearm - inside - kidney shaped padding	N/A w/armor 20.00 PAIR
1G	Seat padding - closed cell - Note: this can be restrictive and bulky; should be used only if specifically needed.	35.00
1I	Bicep Padding - inside - Dirt Track	25.00 PAIR
1J	Shin Padding - inside - Dirt Track	25.00 PAIR
1S	Shoulder Padding - inside - closed cell	N/A w/armor 20.00 PAIR
3	Hip Padding - inside sewn at hip area	N/A w/armor 35.00 PAIR
INSIDE LEATHER PATCH - DOUBLE LEATHER PROTECTION		
2	Extra Leather at hips inside pants	30.00 PAIR
4	Full Double seat, inside pants	30.00
4A	Inside leather elbow patches - football shape	25.00 PAIR
4B	Inside leather knee patches	25.00 PAIR
4C	Inside leather shoulder patches	25.00 PAIR
4D	Inside leather elbow/forearm (kidney shape) patches Wrist zippers must be along inseam as patch interferes	30.00 PAIR
4E	Inside leather shoulder patches	25.00 PAIR
GRND POWERSTRETCH + LEATHER		
	Aramid sandwich at shoulder, arm, hips, seat and legs. GRIND is Vanson's own special layers of materials - including ARAMID (Kevlar), nylon and leather	150.00 SET
VENTING SYSTEMS AND VENT OPTIONS		
19	Zip Vents - Rear, at sides, under arms as exit vents	25.00 PAIR
19A	Zip Vents - on front show locations on diagram	40.00 PAIR
19C	RAM-AIR sleeve vents - zipper at inside of elbow on sleeve allows air flow up sleeve to armpit area. Patented design that prevents sleeve from billowing while flowing air	45.00 PAIR
19D	RAM-AIR pant vents - zip vent set into seam in upper front leg. Patented design prevents leg from billowing while air is flowing. Vent is controlled by water-proof zipper	45.00 PAIR
19E	Barracuda style vent across back from armhole to armhole. Zipper is tucked under the back yoke for protection Structural integrity is provided by the lower back attached to a cordura mesh screen under the back leather yoke	50.00 EACH
OUTSIDE POCKET OPTIONS		
7	Outside pocket - Zipper closed	20.00 EACH
7A	Outside pocket - Snap closed	20.00 EACH
7C	Outside pocket - Open welted pockets	20.00 EACH
7D	Outside pocket - Flap	25.00 EACH
7G	Leather lined outside zipper pocket	35.00 EACH
7H	Leather lined outside snap pocket	30.00 EACH
7I	Leather lined outside pocket - open top	30.00 EACH
7M	Ignition key pocket - leather lined - on left sleeve, Pocket is low bulk, set flush in sleeve with exposed zipper	10.00 EACH
7N	Ignition key pocket - leather lined - on right sleeve, Pocket is low bulk, set flush in sleeve with exposed zipper	10.00 EACH
7PC	Cargo pocket with center front bellows pleat. Top Entry. Pocket is applied onto garment. CIRCLE top entry finish:	25.00 EACH

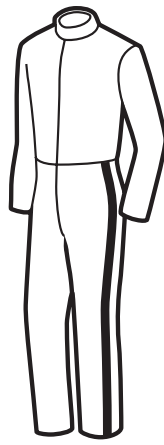
	OPEN	VELCRO-STRIP	CENTER-SNAP	
7PCD	Cargo pocket with side wall construction. Top Entry. Pocket is applied onto garment. CIRCLE top entry finish:			25.00 EACH
	OPEN	VELCRO-STRIP	CENTER-SNAP	
7PCF	Add a flap to close over #7PC or #7PCD cargo pockets. Flap is applied above cargo pocket. CIRCLE flap closure			15.00 EACH
	OPEN	VELCRO-STRIP	TWIN-SNAP	
7PV	TRANSFORMER Vent-pocket is a patented Vanson design. Pocket converts to large vent area when the outer cover is rolled up and secured under the top flap.			45.00 EACH
COLLAR DETAILS				
15	RAF style collar (shirt style)	CIRCLE collar snap type		20.00
	NO-SNAP	SNAP-DOWN-COLLAR	HIDDEN-SNAP	
15A	Mandarin style collar with snap-back tab			20.00
22B	Nehru collar - open at center front			22.00
33	Mandarin collar with velcro foldback and closure			20.00
EPAULET / BELTS / SUSPENDER OPTIONS				
40A	Suspender buttons - set to waistband of pants - four sets of two buttons each to attach suspenders #40S			15.00 SET
40S	Suspenders - also sold separately			49.00 EACH
WRIST DETAILS				
11	Velcro security tabs over the zip pull at wrist and/or ankle zippers.			15.00 PAIR
	CIRCLE:	WRIST	ANKLE	
LOWER LEG + ANKLE DETAILS				
14E	Double ankle zipper design - with 12" zipper and gusset to allow pants either a Boot Cut or Tapered fit. Next to the gusset zipper is the second zipper to open and close the legs for easy on and off. Set to back of leg.			40.00 PAIR
BOOT	Boot cut to fit over boots			25.00 PAIR
TAPR	Tapered cut to fit inside boots			25.00 PAIR
LINING OPTIONS				
27A	LEATHER HANGLOOP set into leather facing at neck			10.00 EACH
EXPANDER PANEL OPTIONS				
44	Expansion panels added above knees		CIRCLE: HEAVY-MESH(check tech for ok) SOLID-LEATHER PROperf	40.00 PAIR
44A	Leather expanders added to back at shoulders		CIRCLE: HEAVY-MESH(check tech for ok) SOLID-LEATHER PROperf	50.00 PAIR
44B	3 Rib knee expanders added to one piece upper legs at knees			40.00 PAIR
EMBROIDERED LOGO + SPONSOR PATCHES				
23	Velcro sewn in square to accept #24 (Leather Patch) Square size approx. 12" Wide x 12" High. (Velcro Pile)			20.00 EACH
24	Square of leather with strips of velcro to mate up with #23 Square size approx. 12" Wide x 12" High. (velcro hook)			25.00 EACH
26	Sewing on sponsor patch(es) provided by customer covered in clear plastic to help keep patch clean. Cost is per patch			8.00 EACH
26C	Chenille VANSON patch - Classic script with flowing "V" Patches are handmade and are approx 13 to 15 Long x 8 High			60.00 EACH
26D	VANSON STAR - two color approximately 1/2" outline Approximate sizes CIRCLE: 15.5" Wide x 13.75" High 13" Wide x 11.75" High 10.75" Wide x 10" High			49.00 EACH
26E	U.S. FLAG PATCH embroidered - on shoulders always set with star field facing forward. Show location in design section.			10.00 EACH
26P	U.S. FLAG - LEATHER (approx. 8" x 9") handmade - 100% leather flag with full 50 star field			79.00 EACH
26R	Crossed VICTORY checked flags - for back of suit			65.00 EACH
26S	Victory checkered flag - small for chest/shoulder/glove			40.00 EACH
26T	Reflective VANSON Oval (rubber Oval) Specify location and number in design section.			N/C
26TA	VANSON Competition Oval(s) (vinyl) Specify location and number in design section.			N/C
26TE	Cloth Embroidered VANSON Oval Specify location and number in design section.			N/C
26TL	Leather embroidered VANSON Oval - specify colors Specify location and number in design section.			10.00 EACH
26V	VANSON "V" in a circle - vintage Vanson logo from 1974 Circle is 3.25" in diameter. Used for chest and shoulders			20.00 EACH
26VV	VANSON "V" - vintage Vanson logo from 1974 "V" is 1.50" Wide x 2.25" High. Used on chest and shoulders			10.00 EACH
EMBO	Leather embroidered VANSON oval - specify colors			20.00 PAIR
HARDWARE OPTIONS				
55	Chrome hardware + zippers			N/C
55A	Brass hardware + zippers			N/C
55B	Black hardware + black molded nylon zippers			N/C
55C	Black hardware + black metal zippers. Black Anodized			N/C
55N	Riveted leather zipper pulls			5.00 ALL



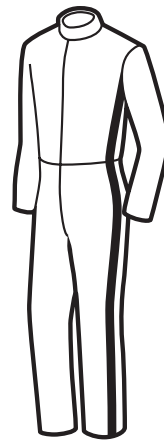
A Both Arms



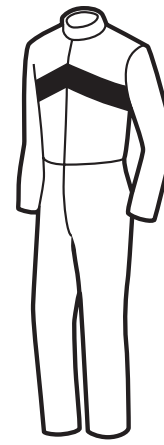
B Arms & Sides



E Both Legs



G Armpits to ankles



H Racing band front or back

STRIPE STYLE	LOCATION ON SUIT (see diagrams to left)				
	A	B	E	G	H
 1 Single, 1 inch stripe	\$25.00	\$50.00	\$30.00	\$40.00	\$30.00
 2 Twin, 1 inch stripe	\$50.00	\$100.00	\$60.00	\$75.00	\$60.00
 3 Triple stripe 2 color	\$75.00	\$125.00	\$90.00	\$115.00	\$90.00
 4 Two inch stripe	\$30.00	\$55.00	\$35.00	\$45.00	\$35.00
 5 Three inch stripe	\$35.00	\$60.00	\$40.00	\$50.00	\$40.00

STRIPES TOTAL \$

STRIPE MATRIX

Choose stripe pattern you want and location. Example: A4=2 inch (#4) going down arms (A). Cost \$30.00 Non standard widths are priced as next widest standard stripe. Stripes over 3" wide are an "inlay" see previous page for costing.

Note: 3M® Reflective tape is offered in any stripe or pattern design as long as it can be done. This is a difficult material to work with.

Note: Foils and Special Effects leather cost 15% more.

INLAYS & INLAY DESIGNS

Inlays are stripes over 3 inches in width. Inlay Designs are those color separations that require seam lines in addition to the basic seams (shown on the diagram). Symmetrical Inlay (side to side symmetry) are priced as \$100.00 top and \$100.00 bottom. Asymmetrical Inlays (no symmetry side to side) are \$150.00 top and \$150.00 bottom.

Top Inlay Total \$ _____

Bottom Inlay Total \$ _____

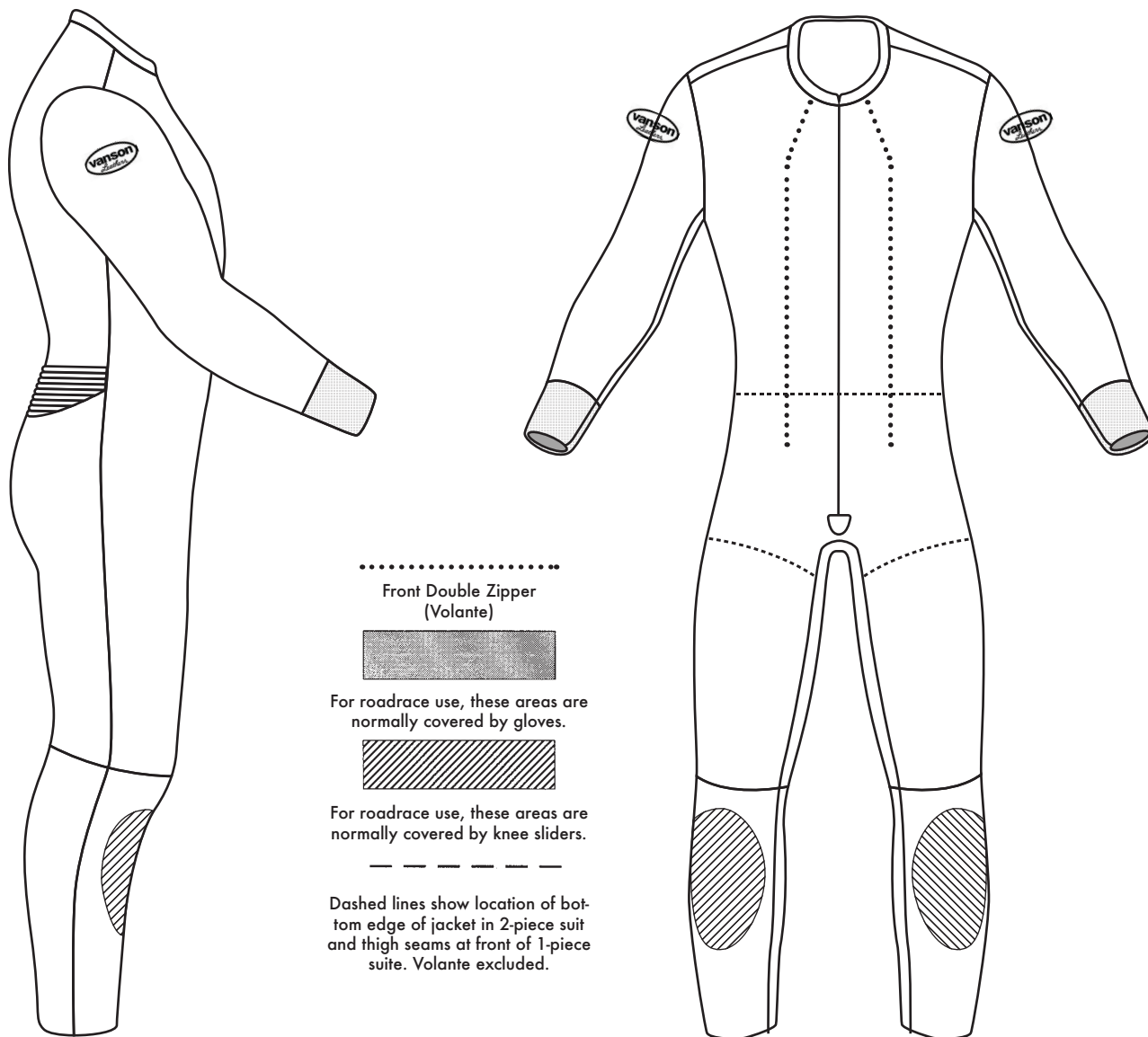
Total For Inlays \$ _____

Sponsor Patches

FRONT	BACK	LEFT SIDE	RIGHT SIDE

Draw Your Own Design

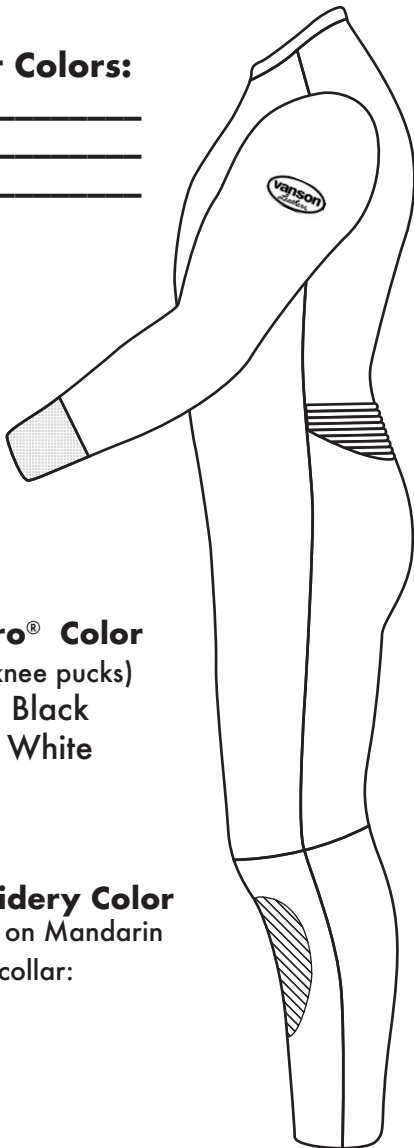
Sketch suit design and show where any letters or numbers go. Show location of selected options such as sponsor patches and pockets. In addition to this section, fill in letters and numbers are part of your design. After reviewing design, we will advise you of the cost.



DESIGN AND STRIPE NOTES: Use these lines for any notes that may help our design department interpret your design. You will be advised of cost after we have reviewed it.

NOTE: Changes to your order after we have received it may affect our scheduling. Changes made after certain production steps may also incur extra charges.

Suit Colors:



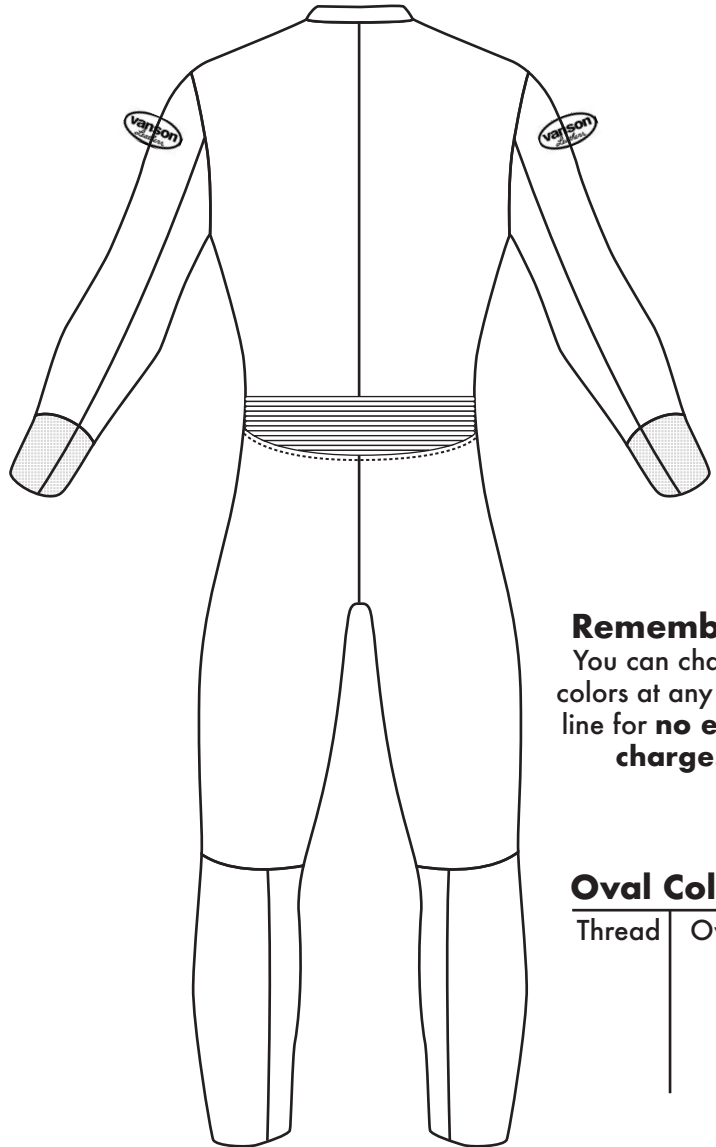
Velcro® Color

(for knee pucks)

- o Black
- o White

Embroidery Color

Vanson on Mandarin collar:



Remember!

You can change colors at any seam line for **no extra charge!**

Oval Colors

Thread	Oval

**ADDITIONAL COMMENTS
OR INFORMATION?**

If there is any additional information or comments that you think could help us more clearly create your design please write it beneath this box.

Letters & Numbers [Types and Sizes]

Choose Type & style. Fill out the correct section below. Mark on diagram the location and direction the word[s] are to be read. Sizes shown are used as a guide only. Letters are sized to fit the design and pattern based on your specifications.

Types of Letters and Numbers

The letters in the boxes after the examples are to identify the TYPE	PLAIN	P
	OUTLINE	O
	SHADOW	SH
	SLOPING	S
	SLOPING OUTLINE	SO
	SLOPING SHADOW	SS

Sizes of Letters and Numbers

2" \$5 ea	3" \$6 ea	8" \$8 ea
2" \$8 ea	3" \$10ea	8" \$14ea
2" \$8 ea	3" \$10ea	8" \$14ea
2" \$5 ea	3" \$6 ea	8" \$8 ea
2" \$8 ea	3" \$10ea	8" \$14ea
2" \$8 ea	3" \$10ea	8" \$14ea

Lettering Type - Embroidered

Size	Plain	Outline
2"	=\$4	=\$8
3"	=\$6	=\$10
4"	=\$8	=\$12

Total Cost of all options and services on this page.

\$ _____

* Carbon X® is a Registered Trademark of Chapman Thermal Products

Note: If you are ordering OUTLINE, SHADOW, SLOPING OUTLINE, or SLOPING SHADOW write the primary [or main] color FIRST followed by the color of the outline or shadow.

Note: Embroidery is available. Please call for quote. Foil laminated leather 15% extra. Size is used only for pricing and reference. Shape and space may require slight changes in size. If exact size is desired, please contact Vanson directly.

Styles of Letters and Numbers

BANCO	CANCUN	FUNHOUSE	Brush Script
BALLOON		FUTURA	SERPENTINE
BEACH HOUSE	CHOPHOUSE	GINKO	SQUARE
BLOCK	COOPER	OLDTOWN	STACCATO
BREMEN	COSMIC	RAIDHOUSE*	TIMES ROMAN
	EXPO	REVUE	TIMES SCRIPT
			TRANSROBOT

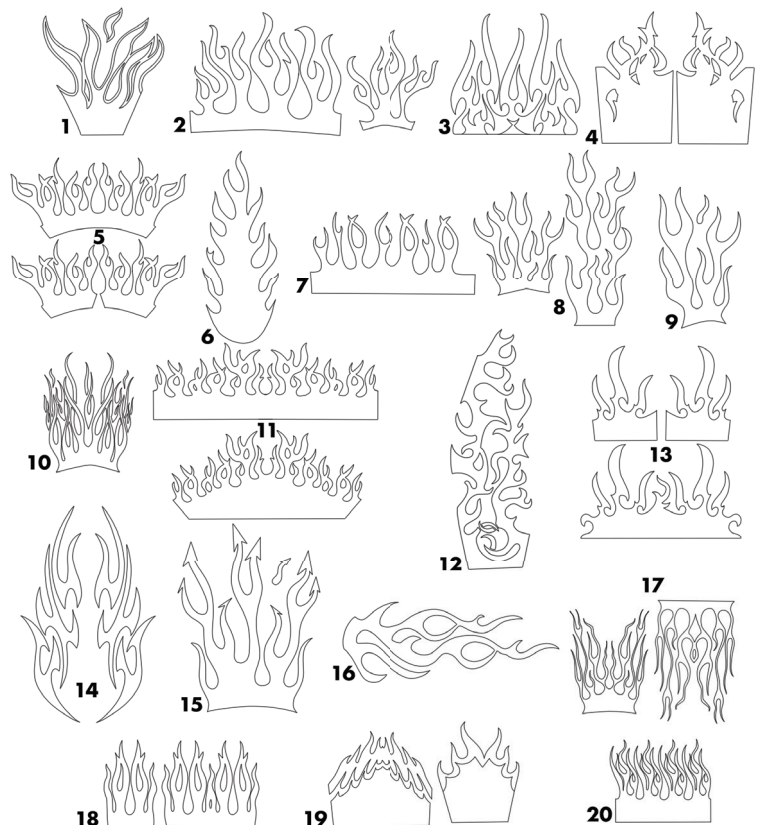
* Available in CAPITALS only. Additional fonts available. send sample - we will match as closely as possible.

TYPE	SIZE	STYLE	WORDING	COLOR(S)	LOCATION	Total no. of letters	TOTAL \$

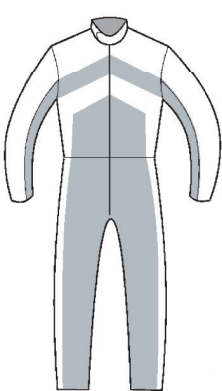
Numbers and letters TOTAL \$

Design Suggestions

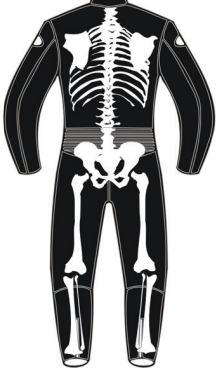
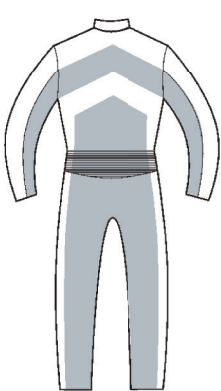
Graphic design shown here are additional to the cost of the suit. Call [508]678-2000 for pricing and other choices. Please Note: representation of these designs may have to be varied dependent on the suit type and the options you choose to have included in you suit. The #9 flame must be 2 colors minimum without an outline. #9 flame are a 3 color flame. Please do not pick only 2 colors for #9.



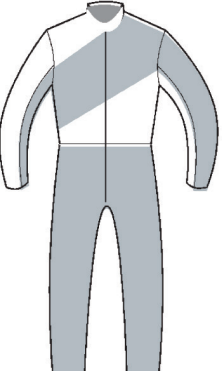
BONE - FRONT
\$400.00



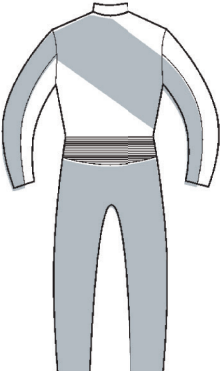
DR1D
\$200.00



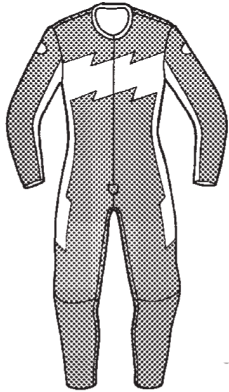
BONE - BACK
\$400.00



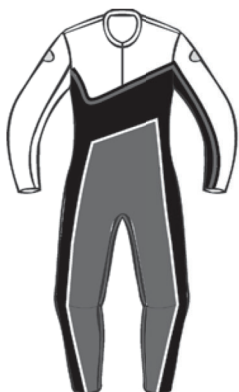
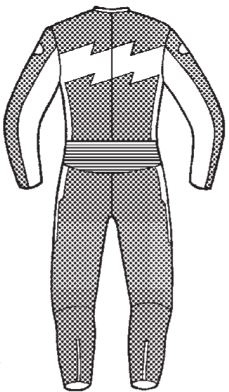
DR2D
\$200.00



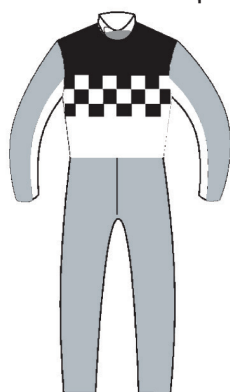
For information on stripe options and pricing, see "Stripe Style" section.



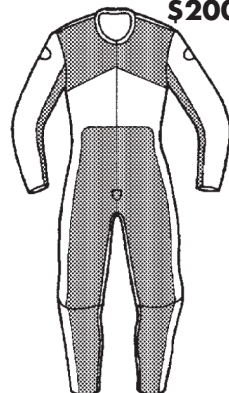
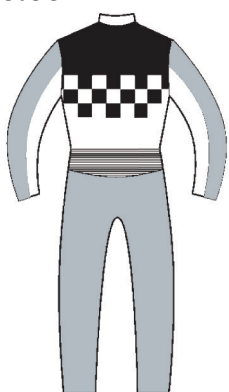
DESIGN HH
\$200.00



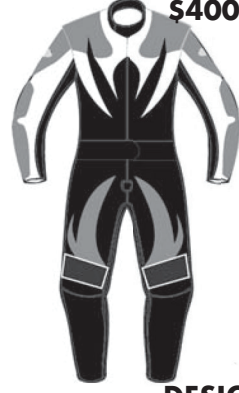
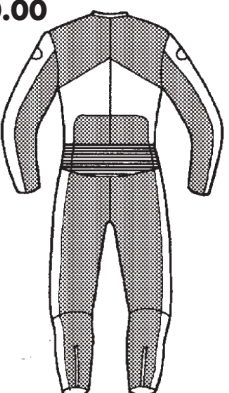
DESIGN MS
\$400.00



DR3D
\$250.00



DESIGN KK
\$150.00



DESIGN SA
\$250.00



DESIGN V3
\$150.00

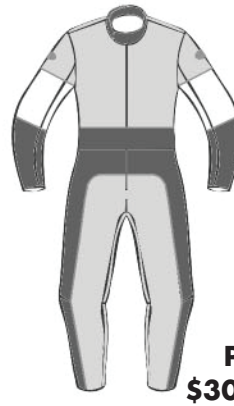
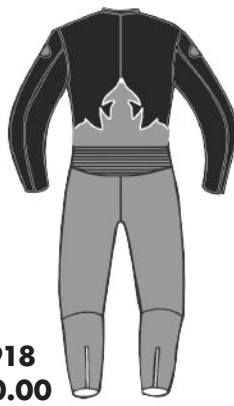




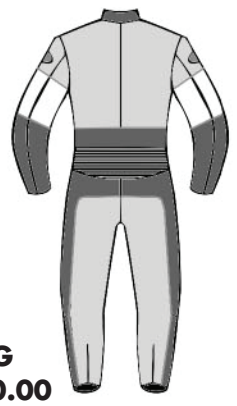
10553
\$275.00



10918
\$300.00



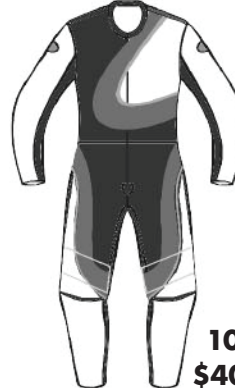
PG
\$300.00



9500
\$300.00



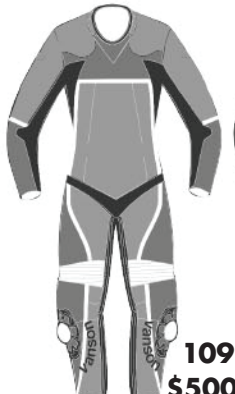
10082
\$375.00



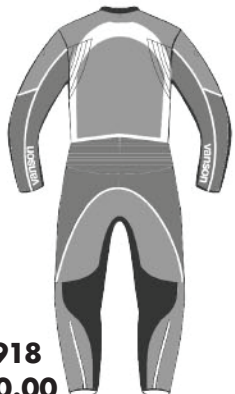
10542
\$400.00



10173
\$425.00



10918
\$500.00



12374
\$500.00



STANDARD GRAPHICS



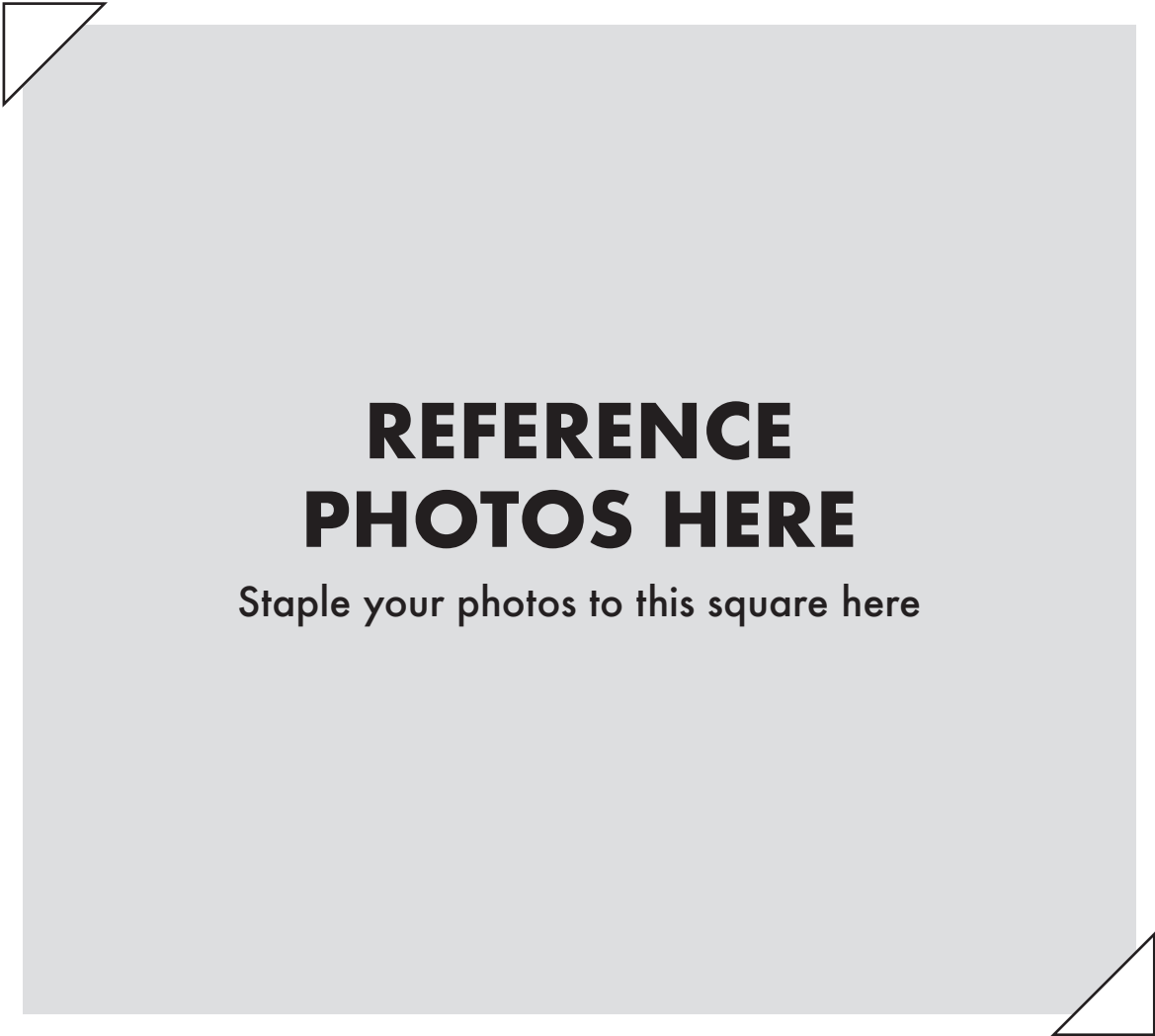
10297
\$550.00



This is our selection of standard graphics. You can order one of these or pull some inspiration from these suits into your design.

**ADDITIONAL COMMENTS
OR INFORMATION?**

If there is any additional information or comments that you think could help us more clearly create your design please write it beneath this box.



Take Your Measurements

GENERAL INSTRUCTIONS:

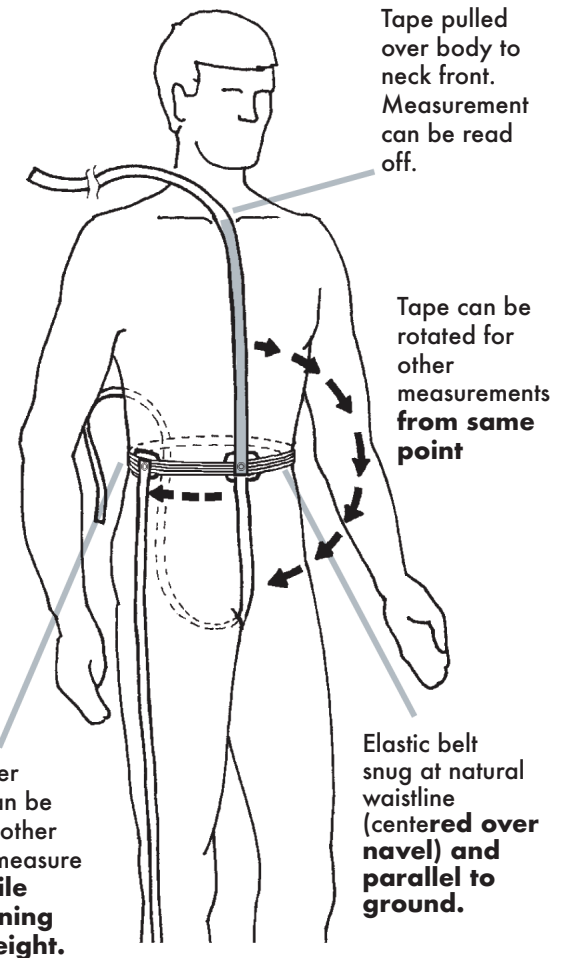
- **Never measure yourself.** Get someone else to help you.
- For taking measurements, wear jeans that fit you comfortably but snugly and a t-shirt. Empty contents of pockets. Pull up pants for snug fit. Remove belt.
- On measurements involving the waist or "**VMD Waist**" use **Vanson Measuring Device** (see below). **Another tape will also be required** for measuring.
- Pull tape measure snug **DO NOT allow extra** in your measurements.
- Vanson race suits are purposely designed for comfort and ease of movement in the **race position**. They are designed to be worn over minimum clothing. They may not feel comfortable while standing or walking. **They are not designed for touring or pedestrian use**

HOW TO USE THE VANSON MEASURING DEVICE

- This device is designed to assist you in obtaining consistent measurements. This is of utmost importance in order for us to make your suit fit as it should. Use on measurements marked 6.
- Secure the **elastic belt** part of the device around waist at **navel**. Make sure **belt is parallel to ground**.
- The elastic should be a snug fit so it does not move up and down easily when you rotate the **tape** or slide the **tape slider buckle**.
- You can now snap the tape to the tape slider buckle.
- Have someone run the tape over your body to the point you need to **measure to**, then write down the measurement.
- Rotate tape for other measurements that are **from the same point**. For other **measure from points**, slide tape slider buckle.

Make sure elastic belt does not move accidentally during measuring process.

**If you have questions,
call Vanson's help line
(508) 678-2000**

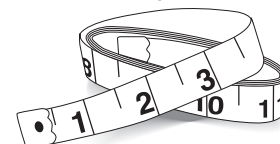


Make your own VMD

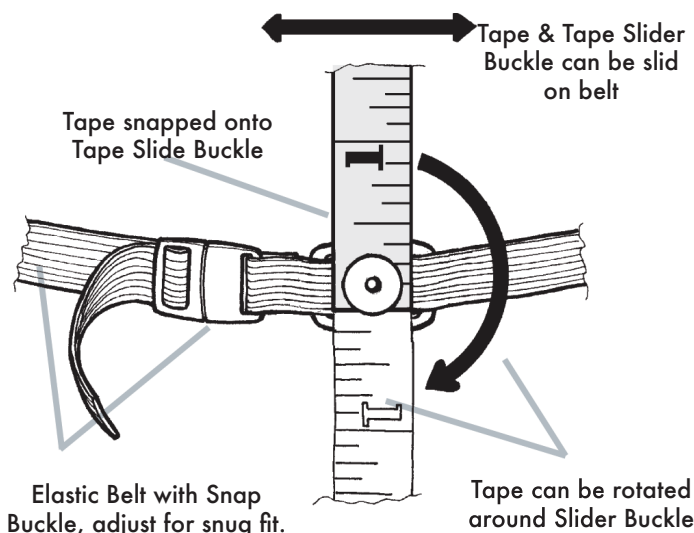
- 1 String/Elastic that will stay in place around waist at navel



- 1 Measuring tape



Make sure the band or string around the waist is parallel to the ground (periodically check throughout measurements). Make sure to take measurements along the string or band from the same points each time.



Vanson Measuring Device

SUIT MEASUREMENTS

Contact Information

Date ____ / ____ / ____

Name _____ Email _____

☐ MALE ☐ FEMALE Height _____ Weight _____ Age _____

1. Are you a bodybuilder? **NO** ☐ **YES** ☐

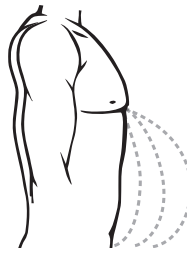
2. Are there any existing physical conditions that should be allowed for in the fit of this suit? If Yes, describe.

3. Are you measuring over any braces/armor? If Yes, describe.

4. What brand/model spine pad do you wear?

5. What type of belly do you have?
Please circle the one that best fits you.

FLAT **MEDIUM** **LARGE** **EXTRA LARGE**



Note: DR2 suit only - circle one: **TIGHT** **SNUG** **COMFORT**

RIDING POSITION DRAG RACE

☐ Upright ☐ Race Tuck ☐ Laydown

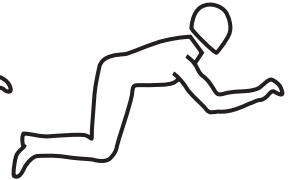
RIDING POSITION - STREET OR ROAD RACE

☐ Super Sport ☐ 250 GP ☐ Sidecar

HANDLEBAR POSITION - CHECK ONE

☐ Drag Bars ☐ Clip-Ons ☐ Low Rise Bars

☐ RACE TUCK ☐ EXTREME TUCK ☐ LAYDOWN



ATTENTION!

WARNING: If your measurement checks are off, your suit will not fit correctly. These checks will take much less time than waiting for adjustments to be made. Help us eliminate unnecessary fit issues by providing accurate measurements.

IMPORTANT: Please send us **THREE** clear full length photos with the measuring device around your waist.
One full frontal, one side profile, one rear with arms at side.

NOTE: Measure your body, then if you are wearing gear (back brace, knee brace, etc. then measure while wearing your brace(s).
Write in any open space with a note describing your gear and anything that will help us provide you with the best fit.

MUST BE WEARING A PAIR OF GOOD FITTING JEANS AND A T-SHIRT!

IF YOU HAVE QUESTIONS CALL 508-678-2000

MAKE SURE ELASTIC BELT (VMD) DOES NOT MOVE

MEASUREMENTS TAKEN BY:

GUIDE KEY

Check if completed

SECTION A. ____

SECTION B. ____

SECTION C. ____

SECTION D. ____

SECTION E. ____

SECTION F. ____

GUIDE KEY

Specific

SECTION G. ____

SECTION H. ____

REMEMBER !



VMD - WAIST

This is an indicator showing where the elastic band from the Vanson Measuring Device rests (at the navel and parallel with the ground). Put this device on **AFTER** you complete measurement #3.



CHECKERED BOX

This is used when you are doing your second measurement over your armor or brace



100% MADE SOLD AND SERVICED IN THE U.S.A.

WITH CORRECT MEASUREMENTS AND EQUATIONS WE OFFER A 100% GUARANTEED FIT

**SECTION A
CIRCUMFERENCES**

NECK 1

UPPER CHEST* 2
Across front over protection

CHEST* 3
Around fullest part over protection
Put on VMD

WAIST* 4
At navel, **VMD** belt is parallel to the floor. over protection

BELTLINE* 5
at top of pants over protection

HIPS* 6
Around fullest part Mark outseam over protection

THIGH 7
2" below crotch Mark outseam

KNEE CIRCUMFERENCE 8
With leg straight Mark outseam

CALF 9
Around fullest part **OVER BOOT**

YES ☐ NO ☐

ANKLE* 10
Around at anklebone **OVER BOOT**

YES ☐ NO ☐

11 BICEP
With muscle flexed around widest part.

12 FOREARM
Make fist then measure

13 WRIST
Around wrist bone

LEGEND

A. Neck Hollow of neck at the stop of sternum

B. VMD-Waist Waist at navel where you have the VMD - parallel to floor

C. Crotch Pants seam intersection

D. VMD-Waist Back Middle of back where waist and spine meet

E. Nape Of Neck Bone that protrudes from the back of your neck

F. Beltline Front Center of the beltline in front of pants

G. Beltline Back Center of the beltline in back of pants

I. Hips Widest part of hips. Mark on outseam with tape.

J. Thigh 2" Below crotch Mark on outseam with tape.

K. Knee Middle of knee cap

L. Ankle At ankle bone

M. / N. Shoulder Outermost point of shoulder bone

O. Wrist Outer bone on wrist (pinky side)

**SECTION B
VERTICAL/HORIZONTAL**

WAIST TO HIPS 14 **B** **I**
outseam

WAIST TO THIGH 15 **B** **I** **J**
outseam

WAIST TO MID KNEE 16 **B** **I** **K**
outseam

OUTSEAM 17 **B** **I** **L**
Waist to anklebone outseam

KNEE TO ANKLEBONE 18 **K** **L**

19
#17 - #16 = #18
#18 should = #19

20 WRIST TO INNER ELBOW
At crease

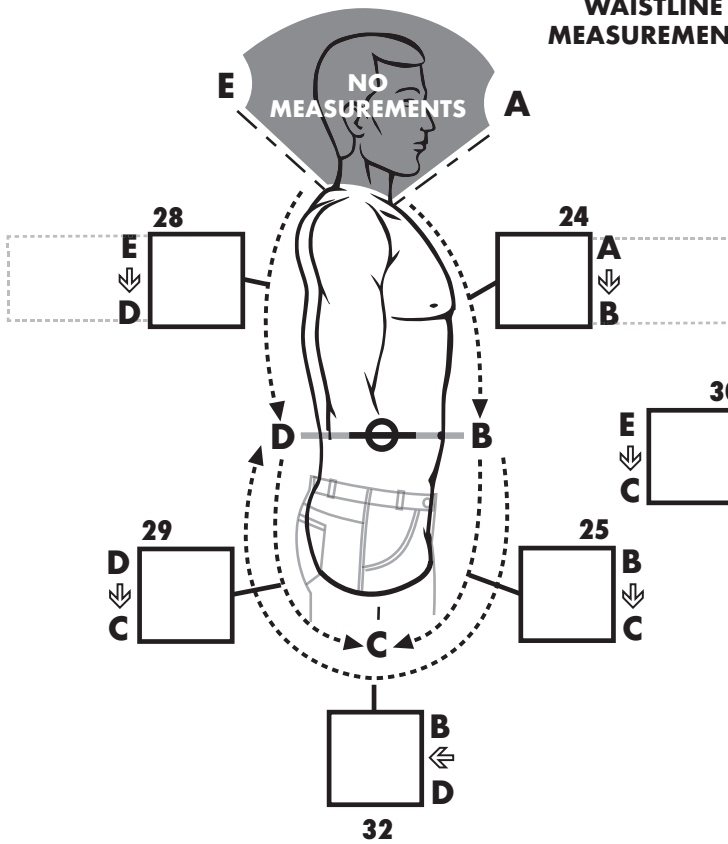
21 CROTCH TO MID-KNEE **C** **K**
At inseam inseam

22 INSEAM **C** **L**
To inner anklebone (pull pants up snug before measuring). inseam

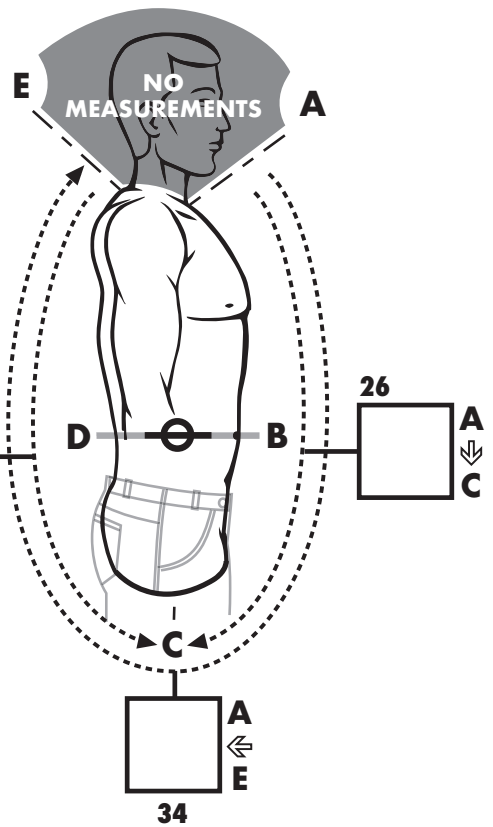
23
#23 = #22 - #21
#23 should = #18

SECTION C

WAISTLINE MEASUREMENTS

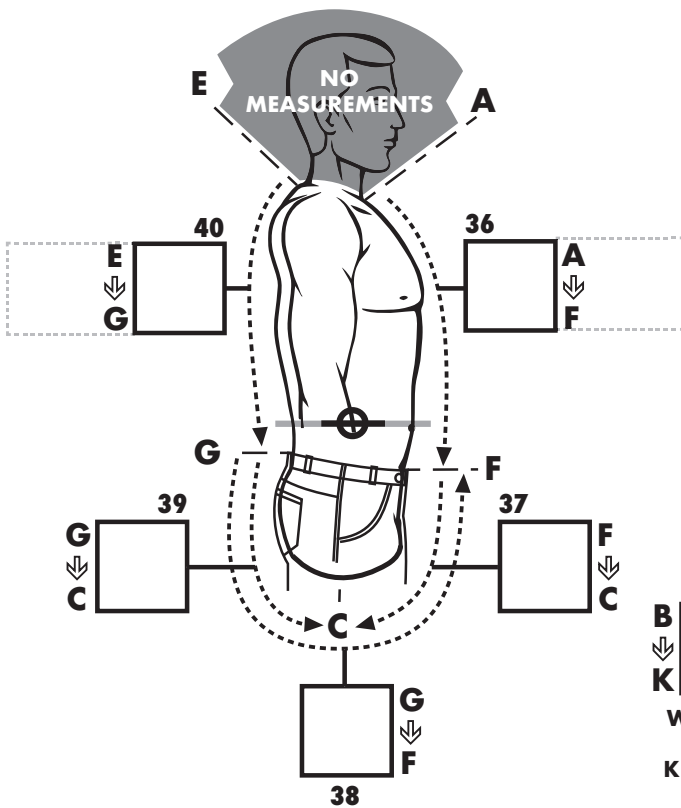


SECTION D

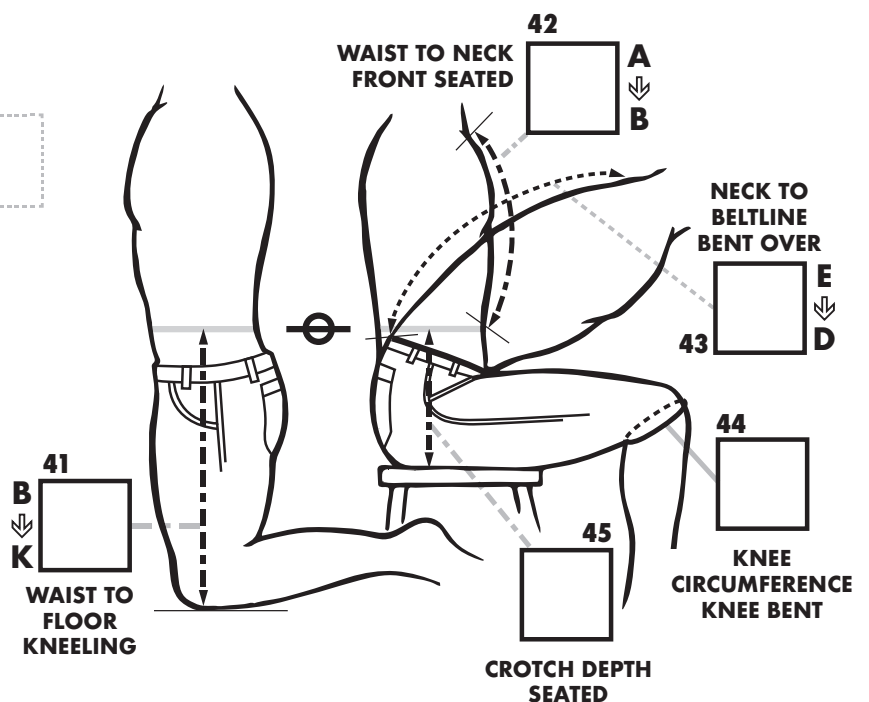


$\#24 + \#25 =$ within 1/2" of #26 27
 $\#28 + \#29 =$ within 1/2" of #30 31
 $\#25 + \#29 =$ within 1/2" of #32 33
 $\#26 + \#30 =$ within 1/2" of #34 35

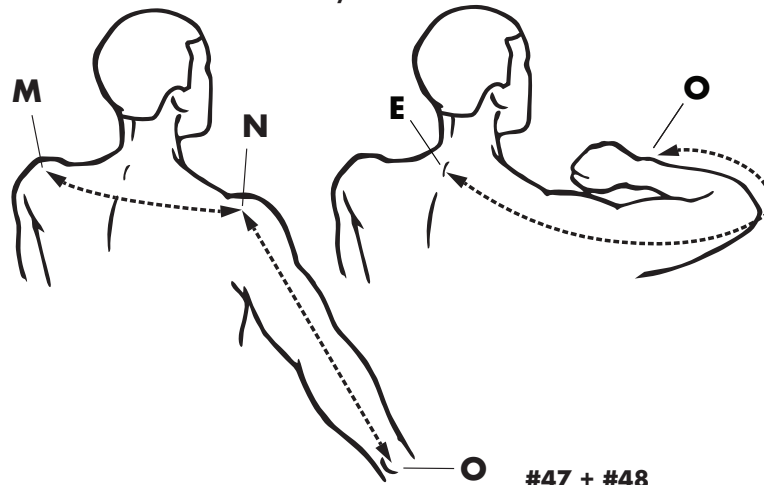
SECTION E BELTLINE MEASUREMENTS



SECTION F SEATED MEASUREMENTS



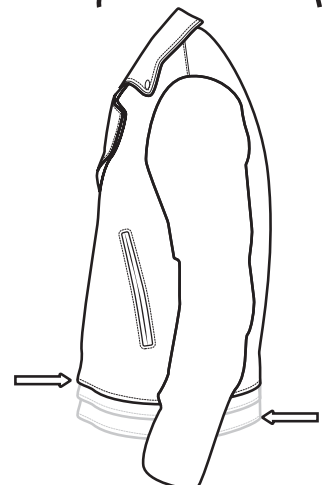
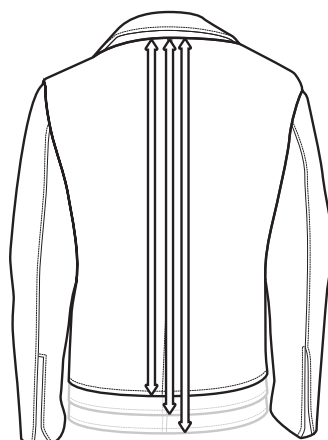
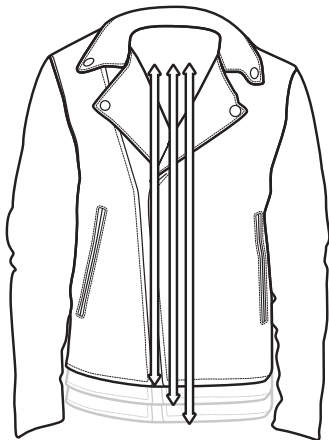
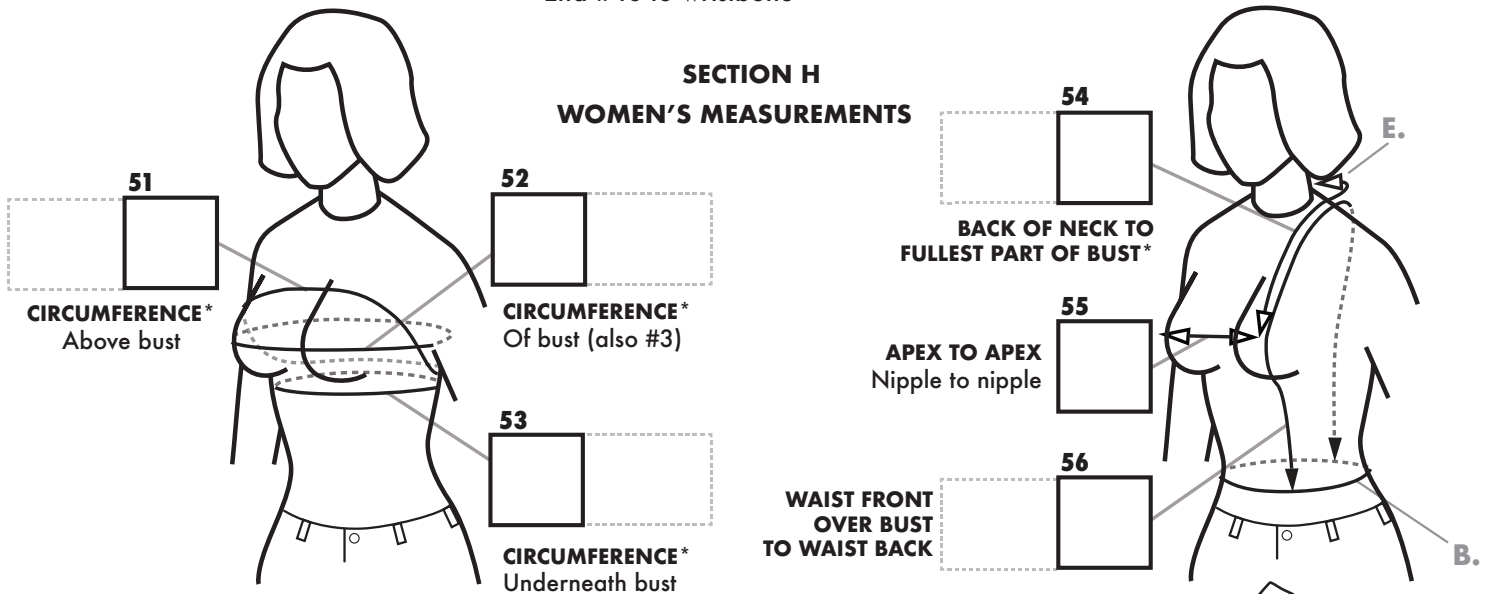
SECTION G SHOULDER/SLEEVE



$$\begin{array}{ccccccc}
 \text{46} & \text{M} \rightarrow \text{N} & & \text{\#46} / 2 = & \text{47} & \text{N} \rightarrow \text{O} & \text{48} \\
 \square & \div 2 & = & \square & + & \square & + 1.5'' = \text{49} \\
 \text{ACROSS SHOULDERS} & & & & & \text{SLEEVE LENGTH} & \text{should equal \#28} \\
 & & & & & \text{End \#46 to wristbone} &
 \end{array}$$

$\text{\#47} + \text{\#48} + 1.5'' = \text{50}$
 NAPE OF NECK TO WRIST

SECTION H WOMEN'S MEASUREMENTS



57. DESIRED JACKET LENGTH IN FRONT (Looking in a mirror) From the top of the ribcage determine where you want the bottom of your jacket to stop.

58. DESIRED JACKET LENGTH IN BACK From the nape of the neck determine where you want the bottom of your jacket to stop.

59. CIRCUMFERENCE Take circumference of torso with **57** being the front point of intersection and **58** being the back point of intersection.



Custom Racing Suits

U.S. Made . . . experience the best!

951 Broadway, Fall River, MA 02724

Phone (508) 678-2000 • Fax (508) 677-6773

E-Mail: vanson@vansonleathers.com • Web Site: www.vansonleathers.com

Date and location _____

Order Form

**After verification of measurements,
we guarantee the fit at no extra charge!**

Type or print clearly. Fill out all the relevant sections. Be sure to read this form carefully, including the terms and conditions section.

All orders must be signed and accompanied by a 50% deposit.

DUE DATE MAY CHANGE WITHOUT NOTIFICATION
Prices subject to change without notice
before receipt of order.

Suit Style #	Suit Color(s)	Vanson use only
		P.O.#

Salesman's #	Pick Up or Ship

Dealer #

Order Date
Due Date

Office Use
Date Order Received

Dealer Name _____

Customer's Name (if different from above) _____

Shipping Address _____

City _____ State _____ Zip _____

Dealer Phone (____) _____ Customer W. Phone (____) _____

Email _____ Customer H. Phone (____) _____

Birth Date ____/____/____ (used for Cust #) First Race Date Needed ____/____/____

Method of Payment: VISA ☐ MasterCard ☐ AMEX ☐ Discover ☐

Money Order ☐ Check ☐ Check number

AMEX, Discover, VISA or MasterCard # _____

Exp. Date _____ CVC Code _____

Authorizing Signature _____

CALCULATE COST		Vanson Use
Add the totals from each section of this form		
1 Basic Suit	\$	
2 Options	\$	
3 Graphic Design	\$	
4 Stripes Etc.	\$	
5 Letters & Numbers	\$	
Custom Fee	\$	
Total	\$	
Asphalt Ins. (+15%)	\$	
Rush Charge (+20%)	\$	
MA res.add sales tax	\$	
Credit on file <input type="checkbox"/> TOTAL	\$	
Deposit 50%	\$	
	\$	
Shipping	\$	

NOTE: If you change your order after we have received it your changes will affect our scheduling. Changes made after certain production steps will also incur additional charges.

TERMS AND CONDITIONS

All custom orders must be signed and be accompanied by a 50% deposit. This deposit is non-refundable once work has commenced on your order.

A rush service is available for a 20% surcharge on the total price of the garment. This is intended to cover costs related to producing your garment within 15 working days. However, this is not a guaranteed service and is dependent on our existing backlog when your order is received. In the event we are unable to produce your suit within the specified time, the rush charge will be refunded. Accurate measurements are your responsibility.

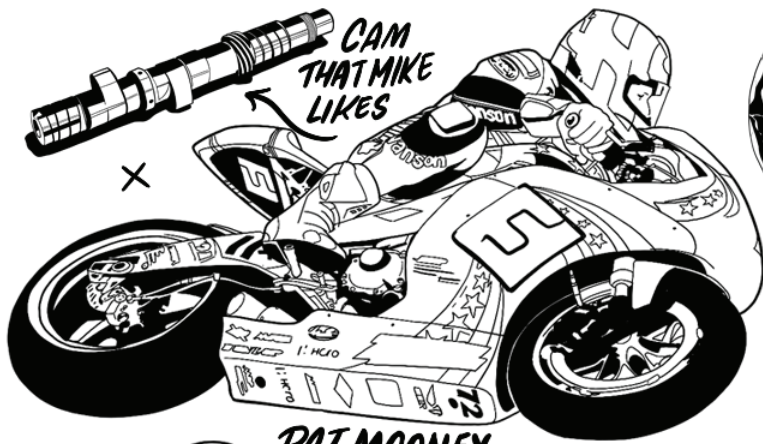
Alterations due to inaccurate measurements are chargeable to you.

If the balance on the garment is not pre-paid, the garment will ship C.O.D. (cash or certified check) for the balance.

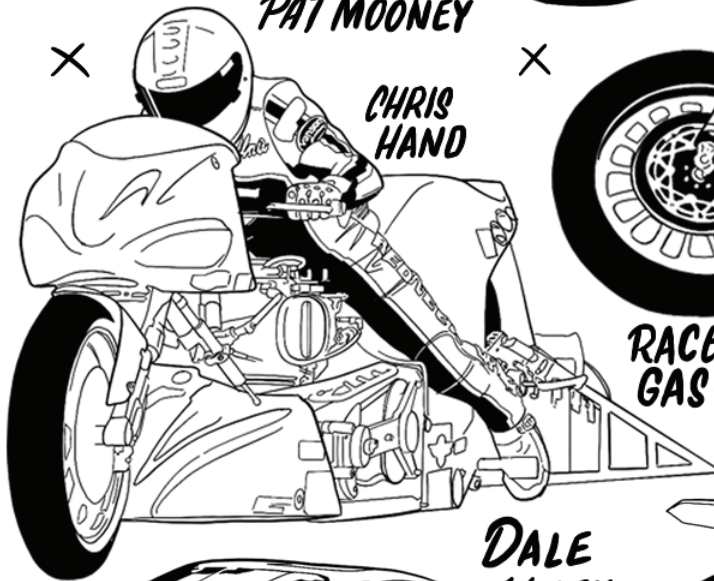
Custom orders are not refundable, if any changes or alterations are required to the garment, it must be returned within 30 days from the date shipped.

All designs submitted or made as a result of this order become the exclusive property of Vanson Leathers Inc. and may not be used for any purpose without the written permission of Vanson Leathers, Inc. Vanson Leathers, Inc. reserves the right to change and modify product specifications.

Note: Florescent and metallic finishes on leather are decorative and are not warrantied by Vanson. All metallic and florescent finishes are light sensitive and may fade in sunlight. All non drum dyed leather, including metallic and florescent finishes, cannot be refinished by Vanson.



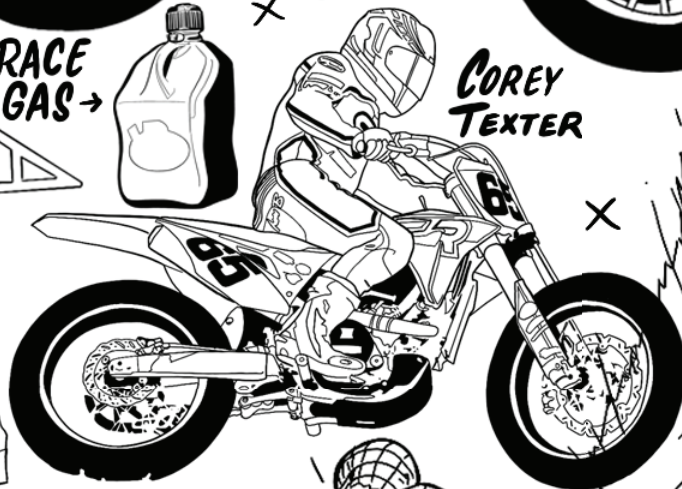
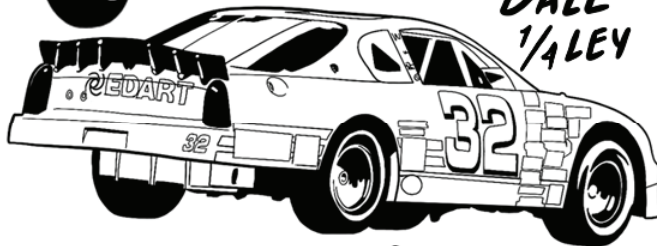
KENNY COOLBETH



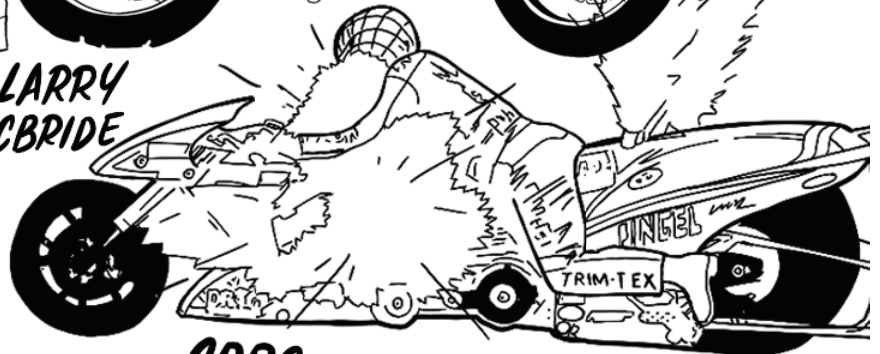
RACE GAS →



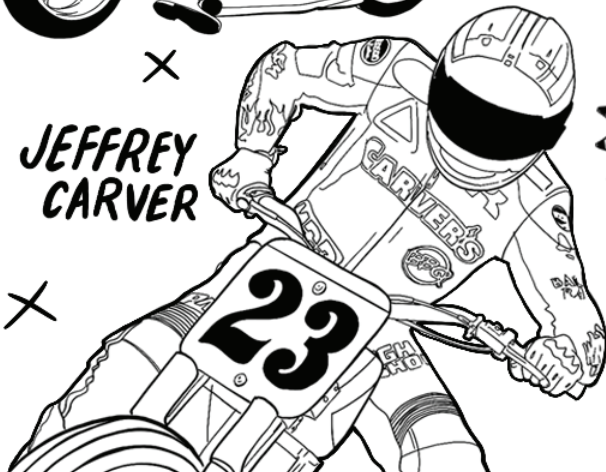
COREY TEXTER



LARRY MCBRIDE



JEFFREY CARVER



SPROCKET

DAVID CRUSSEL

